

Ikram-UI Haq, MD
Division of Internal Medicine,
Mayo Clinic, Rochester, MN

Iqraa Haq, BS
Imperial College London
Faculty of Medicine,
London, United Kingdom

Brian Griffin, MD
Section of Cardiovascular Imaging,
Robert and Suzanne Tomsich Department of
Cardiovascular Medicine, Sydell and Arnold
Miller Family Heart, Vascular, and Thoracic
Institute, Cleveland Clinic, Cleveland, OH

Bo Xu, MD, FACC, FRACP, FASE
Section of Cardiovascular Imaging, Robert and
Suzanne Tomsich Department of Cardiovascular
Medicine, Sydell and Arnold Miller Family Heart,
Vascular, and Thoracic Institute, Cleveland Clinic,
Cleveland, OH; Assistant Professor, Cleveland Clinic
Lerner College of Medicine of Case Western Reserve
University, Cleveland, OH

Imaging to evaluate suspected infective endocarditis

ABSTRACT

Although echocardiography is fundamental in diagnosing infective endocarditis, sometimes it reveals no evidence of endocarditis while clinical indicators remain consistent with the diagnosis. In such cases, repeat imaging is necessary, and the appropriate timeline for it and whether it should be done with transthoracic echocardiography (TTE), transesophageal echocardiography (TEE), or an advanced imaging method are important.

KEY POINTS

Guidelines recommend TTE as the first test for suspected infective endocarditis, usually combined with TEE.

If imaging findings are negative in a patient in whom the disease is strongly suspected, imaging should be repeated 3 to 7 days later.

TEE is more sensitive than TTE (which is quicker and noninvasive) for diagnosing and characterizing infective endocarditis, but even using TEE, results may be falsely negative before vegetations or other findings of endocarditis are detectable.

Multidetector cardiac computed tomography may be used to better visualize prosthetic valve vegetations, abscesses, pseudoaneurysms, and dehiscence.

¹⁸F-fluorodeoxyglucose positron emission tomography/computed tomography may be indicated for patients with prosthetic valves or cardiac implantable electronic devices.

A 68-YEAR-OLD WOMAN with a prosthetic aortic valve presents with fever and acute right lower limb pain. Blood cultures grew *Staphylococcus aureus*. Transthoracic echocardiography (TTE) demonstrates satisfactory valve function with no obvious vegetations. Due to ongoing concern about infective endocarditis, transesophageal echocardiography (TEE) is performed. Again, no obvious prosthetic aortic valve vegetations are found.

Infective endocarditis can be a challenge to diagnose. Echocardiography is the cornerstone of evaluation, but what should be done if no echocardiographic evidence of infective endocarditis is found in a patient who continues to have bacteremia? Key questions in such a situation include:

- When should echocardiography be repeated?
- Should it be TTE or TEE, or should a more advanced imaging method be used?

This article reviews the use of echocardiography for diagnosing infective endocarditis, the emerging roles of advanced imaging methods, current guidelines and their limitations, and special considerations for patients at high risk.

■ AN OLD PROBLEM IN A NEW DEMOGRAPHIC

Despite advances in imaging and diagnosis, infective endocarditis, an infection of the endocardium or heart valves, remains a serious disease with high morbidity and mortality rates.^{1,2} It is most often precipitated by bacteremia; bacteria (most commonly *S aureus* or viridans streptococci) enter the bloodstream and adhere to damaged or abnormal endothelium, resulting in colonization and prolifera-

doi:10.3949/ccjm.88a.19142

TABLE 1

**Imaging for endocarditis:
ESC¹⁰ and AHA⁴ recommendations^a****Obtain echocardiography as soon as endocarditis is suspected**
(ESC and AHA)**For initial investigation:**

Transthoracic echocardiography (TTE) should be used (ESC)

Both TTE and transesophageal echocardiography (TEE) should be used (AHA)

Perform TEE:

If TTE is not diagnostic in patients with known or suspected infective endocarditis (ESC and AHA)

If complications are suspected (eg, new murmur, embolism, persisting fever, heart failure, abscess, atrioventricular block)
(ESC and AHA)

If intracardiac device, leads, or prosthetic valves are present (ESC and AHA)

Repeat TEE if initial TTE is negative but clinical suspicion of infective endocarditis remains high:

7–10 days later (ESC), or

3–5 days later (AHA)

^aAll recommendations listed are class 1 (strong).

AHA = American Heart Association; ESC = European Society of Cardiology

**Echocardiography is the
cornerstone
of evaluation**tion with monocyte recruitment, thrombosis, and inflammation.³Infective endocarditis has undergone a demographic shift in recent decades. Formerly it was most often seen in patients with rheumatic or congenital heart disease, but now it is likelier to be associated with hemodialysis, immunosuppression, prosthetic valves, other cardiac devices, or intravenous drug use.⁴**ECHOCARDIOGRAPHY IS ESSENTIAL**Infective endocarditis is diagnosed by the modified Duke criteria, with major and minor criteria used to determine whether it is definitely or probably present.³ Major criteria include positive blood cultures of typical microorganisms consistent with the disease and echocardiographic evidence.⁵ Echocardiography is the key imaging method for diagnosing infective endocarditis and assessing its prognosis.⁶

The major echocardiographic criteria for diagnosing infective endocarditis are vegetations (ie, oscillating or nonoscillating intra-

cardiac masses on a valve, other endocardial structure, or implanted intracardiac material), an abscess, and new dehiscence of a prosthetic valve. Valve destruction, aneurysm, or perforation suggest the diagnosis.⁷TTE is typically performed initially. It is rapid, noninvasive, widely available, and highly specific, justifying its use as a first-line screening tool.^{6,8} However, suboptimal findings are especially likely in patients with prosthetic valves because of poor resolution of prosthetic leaflets due to acoustic shadowing.⁹ TEE is used when TTE imaging is suboptimal, or when clinical suspicion remains high in a patient with persistent bacteremia despite negative findings on TTE.Infective endocarditis is a dynamic process, and infective valvulitis may be present before a discrete vegetation is visible using TTE or TEE.² Patients without echocardiographic findings but who still are suspected clinically of having infective endocarditis may either be in the early stages of the disease or have a different disease process.**USE BOTH TTE AND TEE
FOR MANY PATIENTS**Guidelines from the European Society of Cardiology (ESC),¹⁰ American Heart Association (AHA),^{4,11} and American College of Cardiology (ACC)¹¹ are summarized in **Table 1**.**ESC guidelines**The ESC guidelines¹⁰ say to perform TTE as soon as infective endocarditis is suspected.¹⁰ TEE should also be performed in many cases because of its superior image quality, spatial resolution, and sensitivity.⁷ This applies to a variety of clinical scenarios, including when:

- TTE is negative, but a high clinical suspicion of infective endocarditis remains
- TTE findings are of poor quality
- TTE demonstrates abnormal changes, but the valvular structure needs to be further delineated and involvement of other valvular structures needs to be ruled out
- The patient has a prosthetic valve or intracardiac device.

The only scenario in which TEE is not usually performed after TTE yields negative results is in patients who have bacteremia but a low clinical suspicion of infective endocar-

ditis.¹⁰ This includes those with bacteremia as a result of line-related infections whose symptoms resolve after the line is removed, and those without high-risk features (eg, a permanent intracardiac device, dialysis dependency, or bacteremia for at least 4 days).^{12,13}

AHA and ACC guidelines

Recommendations from the AHA⁴ and AHA/ACC¹¹ are similar to those of the ESC.¹⁰ In patients suspected of having infective endocarditis on the basis of the modified Duke criteria (including 2 positive blood cultures), TTE is recommended to characterize anatomic features.¹¹ TEE is recommended if TTE is not diagnostic, intracardiac leads are present, or complications are suspected. TTE should be performed in all cases of suspected native valve infective endocarditis, with follow-up TEE in 3 to 5 days if clinical findings change or suspicion remains high despite negative findings on TTE. Intraoperative TEE is recommended for patients undergoing surgery.

Adjuvant imaging with multidetector computed tomography (MDCT) can be considered in patients who have unremarkable findings on TTE and TEE if prosthetic or paravalvular infections continue to be suspected.¹¹

■ WHEN SHOULD TTE OR TEE BE REPEATED IF NEGATIVE, BUT BACTEREMIA PERSISTS?

There is some controversy as to when to repeat echocardiography in cases in which both TTE and TEE are unremarkable but the clinical suspicion of infective endocarditis is high. Evidence gaps exist for optimal timing of repeat echocardiography according to patient pathology, risk status, and outcomes.

In these situations, a repeat TEE should be scheduled (ESC guidelines: 7–10 days after an initial negative TEE; AHA guidelines: 3–5 days after an initial TEE). But it is especially important that this should be done only if there is ongoing clinical suspicion for infective endocarditis.

Some studies suggest repeating echocardiography 7 to 10 days later, while others recommend 5 to 7 days (or even earlier in *S aureus* infection).^{7,14} Thus, the ESC guidelines recommend repeating TTE or TEE, or both, 7 to 10 days later in cases of an initially negative examination if clinical suspicion of infective

endocarditis remains high.¹⁰

Sochowski and Chan⁸ studied 105 patients who underwent TEE for suspected infective endocarditis, of whom 65 had a negative study. In 56 of these 65 patients, an alternative diagnosis was made, in another 5, infective endocarditis was diagnosed by repeat TEE, and the other 4 patients were treated for infective endocarditis without a definitive diagnosis. Gram-positive bacteremia and prosthetic valves were more common in the group with proven infective endocarditis than in those with suspected infective endocarditis but negative findings on TEE, although the difference was not statistically significant ($P = .07$), possibly due to the small sample size. The study reported that the optimal timing for repeat imaging varied by patient.

Other indications for repeating echocardiography include the new onset of complications of infective endocarditis (eg, a new murmur, embolism, heart failure, abscess, atrioventricular block), persisting fever, and follow-up of suspected, uncomplicated infective endocarditis.⁴

TTE or TEE for follow-up?

Evidence is lacking on whether TTE or TEE is more appropriate when echocardiography should be repeated.¹⁰ TEE remains superior in assessing for evidence of infective endocarditis. Studies from the 1980s and 1990s found TEE to be more sensitive than TTE in detecting valvular vegetations: 100% vs 63% ($N = 96$),¹⁵ 94% vs 44% ($N = 66$),¹⁶ and 87% vs 69% ($N = 64$).¹⁷ Daniel et al¹⁸ also found TEE to be more sensitive than TTE for detecting valvular abscesses: 87% vs 28% ($n = 118$). However, these studies were small and were done decades ago, and echocardiography has undergone many advances since then, including 3-dimensional TEE.

■ NATIVE VS PROSTHETIC VALVE

TEE is more sensitive than TTE for diagnosing infective endocarditis regardless of whether a native or prosthetic valve is involved. However, some differences should be kept in mind.

Use TEE for native valve evaluation

In native valve endocarditis, the diagnostic accuracy of TTE depends on the size of veg-

Infective endocarditis has undergone a demographic shift

etations and underlying valvular disease, with sensitivity ranging from 40% to 63% compared with 90% to 100% for TEE.¹⁹

Reynolds et al²⁰ evaluated TTE incorporating harmonic imaging for 51 vegetations seen on TEE. The sensitivity of TTE in detecting native valve vegetations was only 55%, and the size of the vegetation affected the sensitivity. When TTE was positive, vegetation size on TEE was significantly larger than when TTE was falsely negative, which was true for aortic valves (11.2 ± 3.4 mm vs 5.8 ± 3.6 mm, $P = .001$) and for mitral valves (12.9 ± 4.1 mm vs 7.9 mm ± 5.0 mm, $P = .01$). Furthermore, TEE was able to reveal additional diagnoses not seen by TTE in 7 patients (14%), including aortic valve prolapse, aneurysm, and vegetations on intervalvular fibrosa and pacemaker wires.

Use TEE and consider advanced imaging for prosthetic valves

In prosthetic valve endocarditis, vegetations are more difficult to detect, and TEE is typically used in conjunction with TTE for diagnosis.¹⁹

Use of MDCT

In a systematic review and meta-analysis of 20 studies in 496 patients, Habets et al²¹ found the pooled sensitivities for detecting prosthetic valve vegetations were 82% using TEE, 88% using TEE plus MDCT, and 29% using TTE alone. The pooled sensitivities for detecting life-threatening periannular complications (eg, abscesses and mycotic aneurysms) were 86% using TEE, 100% using TEE and MDCT, and 36% using TTE alone.

Use of FDG-PET/CT

The added diagnostic value of advanced cardiac imaging is reflected in the 2015 ESC and AHA/ACC guidelines, which recommend combined ¹⁸F-fluorodeoxyglucose positron emission tomography/CT (FDG-PET/CT) for diagnosing prosthetic valve endocarditis but not for native valve endocarditis.^{4,10}

In 2019, San et al²² confirmed the rationale for this recommendation after evaluating FDG-PET/CT in 64 patients with native valve endocarditis and 109 patients with prosthetic valve endocarditis. FDG-PET/CT was found not only to be a better diagnostic tool for pros-

thetic valve endocarditis than for native valve endocarditis (sensitivity 83% vs 16%), but it was also better for predicting major cardiac events, infective endocarditis recurrence, and new embolic events ($P = .04$).

CARDIAC DEVICE-RELATED INFECTIONS

Diagnosing infective endocarditis is challenging in patients who have an implantable cardiac device, and TEE is superior to TTE.

In 1994, Vilacosta et al²³ used echocardiography to evaluate 10 patients with permanent transvenous pacemakers who were suspected of having infective endocarditis. TTE was positive for pacemaker lead vegetations in 2 of these patients, while TEE was positive in 7 patients.

In 2013, Narducci et al²⁴ conducted a prospective observational study in 162 patients comparing TEE with intracardiac echocardiography in diagnosing cardiac device-related infection. Intracardiac echocardiography had high diagnostic accuracy for detecting intracardiac masses (sensitivity 100%, specificity 82.8%, positive predictive value 65.6%, and negative predictive value 100%, $P < .001$). However, because this method is invasive and needs to be performed in the cardiac catheterization laboratory, it may not be appropriate for other types of infective endocarditis, for which TTE or TEE have sufficient diagnostic capacity.

PET/CT has also been explored for diagnosing infective endocarditis in patients with implantable cardiac devices.²⁵

CAUSATIVE ORGANISMS

A variety of pathogens have been implicated in causing infective endocarditis. A prospective cohort study of 2,781 patients with infective endocarditis in 58 hospitals in 25 countries found the 5 most common pathogens to be:

- *S aureus* (31%)
- Viridans streptococci (17%)
- Enterococci (11%)
- Coagulase-negative staphylococci (11%)
- *Streptococcus bovis* (7%).

Rarer causative organisms include other streptococci, fungi, and HACEK organisms (*Haemophilus aphrophilus*, *Aggregatibacter* [previously *Actinobacillus*] *actinomycetemcomitans*,

Major echocardiographic diagnostic criteria are vegetations, abscess, and new dehiscence of a prosthetic valve

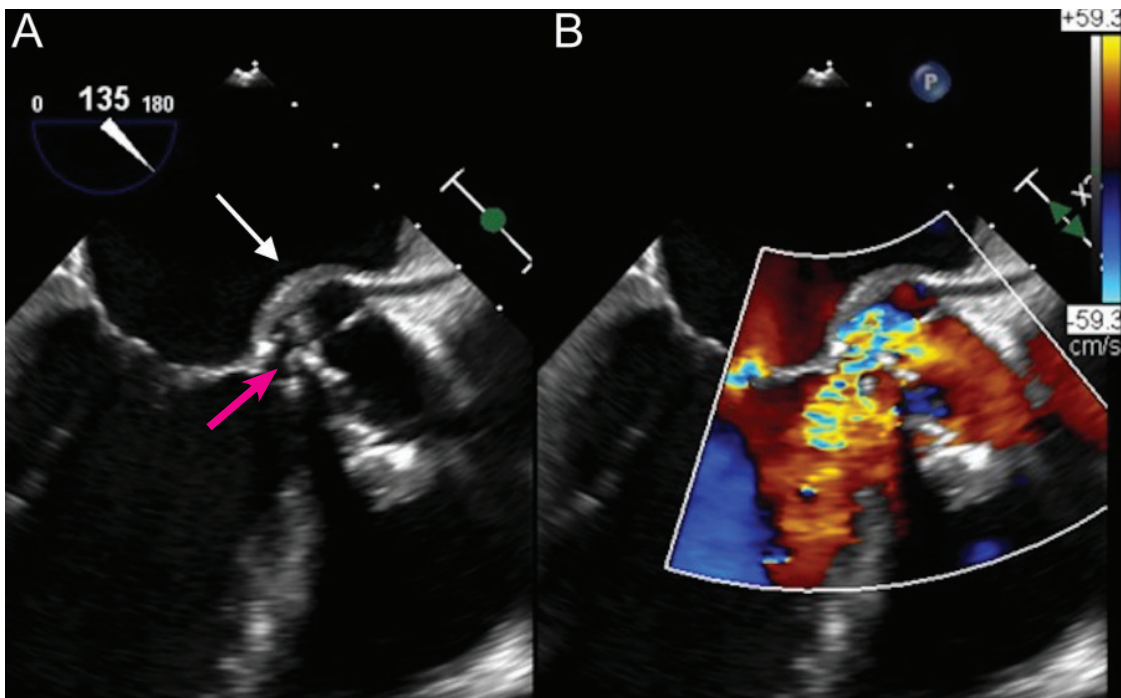


Figure 1. (A) Transesophageal echocardiography, mid-esophageal long-axis view, demonstrates a prominent aortic root abscess cavity (white arrow) posteriorly in a patient with a prosthetic aortic valve. Also note partial dehiscence of the aortic bioprosthesis (red arrow). (B) Color Doppler analysis demonstrates significant aortic regurgitation between the aortic bioprosthesis and the left ventricular outflow tract through the prominent abscess cavity.

Cardiobacterium hominis, *Eikenella corrodens*, and *Kingella kingae*).²

***S aureus* bacteremia**

Infective endocarditis worsens the prognosis of *S aureus* bacteremia, and patients with an intracardiac device are at especially high risk of having infective endocarditis in the setting of *S aureus* bacteremia.²⁶

Initial evaluation with TEE has been suggested for patients with *S aureus* bacteremia because of the high complication rate associated with failure of diagnosis in this setting, and the higher sensitivity and specificity of TEE than TTE alone.²⁷ However, the ESC guidelines recommend TTE as the first-line imaging in *S aureus* bacteremia, and a repeat investigation with TTE, TEE, or both within 7 to 10 days.^{7,10} A 2014 study by Barton et al²⁷ found that more than half of patients (132 of 256) with *S aureus* bacteremia had an initially negative TTE, of which only 6 were subsequently diagnosed with infective endocarditis by TEE (negative predictive value 95% for

TTE in *S aureus* bacteremia), suggesting that TTE may be satisfactory in follow-up of initially TTE-negative patients with uncomplicated *S aureus* bacteremia.

Figure 1 shows an aortic root abscess, a possible complication of *S aureus* bacteremia-associated infective endocarditis.

Enterococcal species

An estimated 3% to 10% of patients with enterococcal bloodstream infections develop infective endocarditis.²⁷ Unlike *S aureus* bacteremia, for which the 2015 AHA guidelines advise initially performing TEE, this is generally not recommended for enterococcal bacteremia.⁴

Bouza et al²⁸ proposed the NOVA score to identify those patients with enterococcal bacteremia with high enough risk of infective endocarditis to warrant TEE. The NOVA score consists of the following:

- Persistent bacteremia (defined as 3 of 3 positive blood cultures or the majority positive if more than 3) = 5 points

TTE is rapid, noninvasive, widely available, and highly specific

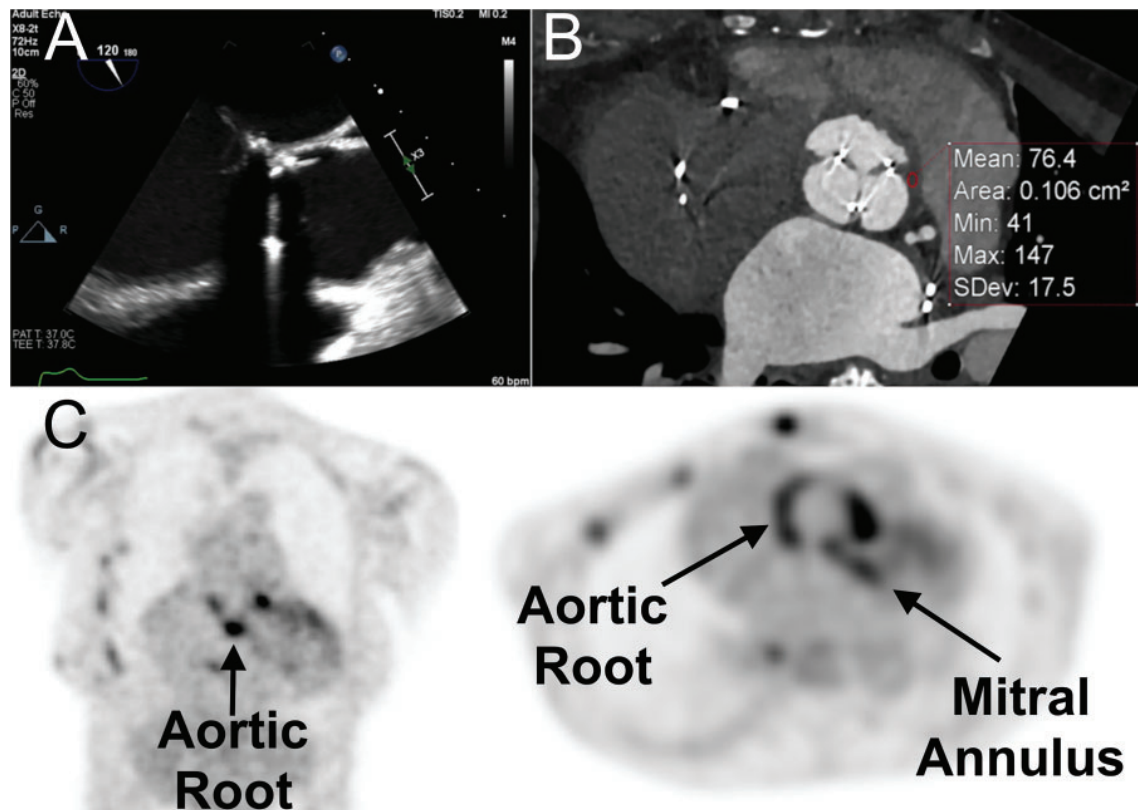


Figure 2. Utility of adjuvant advanced cardiovascular imaging—multidetector cardiac computed tomography (MDCT) and ^{18}F -fluorodeoxyglucose positron emission tomography/CT (FDG-PET/CT)—in the diagnosis of infective endocarditis. A 68-year-old woman with *Staphylococcus aureus* bacteremia in the setting of a bioprosthetic aortic valve developed fever and acute right lower limb pain. Initial transesophageal echocardiography (mid-esophageal long-axis view) showed no obvious vegetation associated with the bioprosthesis (A). Due to ongoing clinical suspicion for prosthetic aortic valve endocarditis, MDCT was performed (B) and, at the level of the aortic root, showed abnormal thickening with elevated Hounsfield units (mean: 76.4 units), highly suspicious for periprosthetic aortic root abscess. FDG-PET/CT (C), demonstrated abnormal increased activity at the aortic root and mitral annulus (arrows).

Perform TTE as soon as infective endocarditis is suspected, and also use TEE in most cases

- Unknown source of bacteremia = 4 points
- History of valve disease = 2 points
- Heart murmur auscultated = 1 point.

The authors concluded that a score of 4 points or more warrants TEE, with a sensitivity of 100% and specificity of 29% for detecting infective endocarditis.

In a retrospective cohort study, Dahl et al²⁹ evaluated a modified NOVA score (2 of 2 positive blood cultures earning 5 points, and all other criteria unchanged). Seventy-six of 78 patients with enterococcal infective endocarditis had a NOVA score of at least 4, translating into a sensitivity of 97% and a negative predictive value of 95%. The findings support

the use of the NOVA score in identifying patients with a low risk of infective endocarditis for whom investigation with TTE may be sufficient. Timing for a repeat echocardiogram, however, is recommended at 7 to 10 days regardless, according to ESC guidelines for *S aureus* and *Enterococcus faecalis* bacteremias.⁷

■ ALTERNATIVE IMAGING METHODS

With advances in cardiovascular imaging, evaluating infective endocarditis is no longer limited to conventional echocardiography and may also include other methods, eg, MDCT, FDG-PET/CT, and other functional imaging (Figure 2).

Echocardiography is limited in that early vegetations are often difficult to detect on TTE and TEE if their size is below the resolution of the transducer. Also, small vegetations can be hard to differentiate from degenerative valvular thickening or calcification.⁸ The ESC guidelines provide some guidance for using alternative imaging methods, such as MDCT and FDG-PET/CT, to increase the sensitivity of the Duke Criteria, but evidence is limited.¹⁰ Despite the growing use of alternative imaging modalities such as MDCT and PET/CT, few studies exist comparing them with TTE and TEE for diagnosing infective endocarditis. As adjuvant imaging modalities become more widely used, more prospective trials are needed to increase the evidence base.

3-D TEE has advantages over 2-D TEE

A 2014 study by Berdejo et al³⁰ compared 3-D TEE with conventional 2-D TEE in 60 patients with a definite diagnosis of infective endocarditis as demonstrated by vegetations seen on 2-D TEE. 2-D TEE underestimated the size of vegetations: the difference in maximum length between 3-D and 2-D TEE was 3.2 mm (95% CI 2.1–4.2 mm).

3-D TEE has potential advantages in evaluating paravalvular extension of infection, valve perforation, and prosthetic valve dehiscence.¹⁰ However, high-quality 3-D echocardiography relies on optimal 2-D imaging, from which the 3-D images are generated.

MDCT is better in some situations

Some studies have found MDCT to be better than echocardiography at identifying infective endocarditis. A review by Goddard et al³¹ found several studies showing MDCT to be equivalent or superior to echocardiography for identifying prosthetic vegetations, abscesses, pseudoaneurysms, and dehiscence.

A 37-patient study by Feuchtner et al³² found that MDCT detected valvular abnormalities in 28 of 29 patients with confirmed infective endocarditis, with a sensitivity of 97% and specificity of 88%. Moreover, MDCT detected paravalvular abscesses and pseudoaneurysms that were not detected by TEE in 3 patients.

MDCT may be superior in these scenarios, especially for evaluating paravalvular extension of infections. However, for typical find-

ings, especially for detecting smaller, mobile vegetations, echocardiography with higher temporal resolution remains the preferred imaging method.³¹ In a study comparing MDCT with TEE in 75 patients with confirmed infective endocarditis, vegetations smaller than 10 mm were underdiagnosed by MDCT compared with TEE (detection rate 52.8% vs 94.4%).³³ Moreover, MDCT assessment is dependent on the quality of the valve images and requires dedicated protocols. For instance, it may be difficult to interrogate the tricuspid valve precisely by MDCT.

FDG-PET/CT has an emerging role

Nuclear imaging techniques are becoming increasingly important for diagnosing infective endocarditis, especially for patients with equivocal TTEs or a negative TTE but a high clinical suspicion of infective endocarditis. FDG-PET/CT has been reported to reduce the rate of misdiagnosed infective endocarditis by detecting peripheral embolic and metastatic infectious events.³⁴ Studies have shown its promising role as a diagnostic tool for infective endocarditis, particularly if related to a prosthetic valve or cardiac device; in such settings, FDG-PET/CT has been found to detect periprosthetic abscesses not identified by echocardiography.^{25,35,36}

A 2020 meta-analysis of 1,358 patients found the pooled sensitivity of FDG-PET/CT to be 0.86 in infective endocarditis involving a prosthetic valve, 0.72 involving a cardiac device, and only 0.31 in native valve infective endocarditis.³⁶

This imaging technique may also prove useful for monitoring clinical response to antimicrobial treatment.³⁷

However, drawbacks include limited evidence of its cost-effectiveness and limited availability, only in tertiary centers with access to PET/CT scanners and appropriate imaging team support.³⁷ In clinical practice, equivocal findings with mild uptake result in clinical ambiguity as to whether an infection is present. Due to limited resolution and valve mobility, the technique may not be sensitive in detecting vegetations smaller than 5 mm on native valves.³⁸ In addition, other diseases associated with increased metabolic activity, including thrombi, atherosclerotic plaques,

TEE is superior to TTE for evaluating patients with an implantable cardiac device

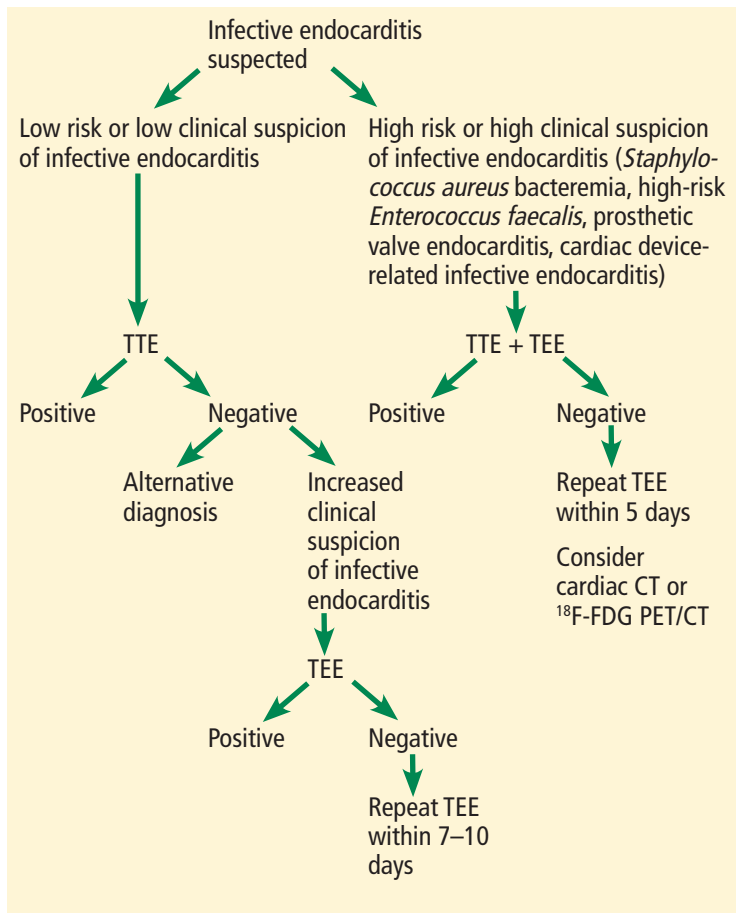


Figure 3. A proposed diagnostic algorithm for infective endocarditis.

TEE = transesophageal echocardiography; TTE = transthoracic echocardiography

sarcoidosis, and primary and metastatic cardiac tumors, may cause false-positive findings, due to focal FDG uptake in the absence of infection.³⁷

■ OUR ALGORITHM FOR EVALUATING SUSPECTED INFECTIVE ENDOCARDITIS

We propose a diagnostic pathway for evaluating suspected infective endocarditis based

on the current literature and ESC and AHA/ACC guidelines (**Figure 3**). First, patients should be risk-stratified to guide the choice of initial imaging method. Per AHA/ACC guidelines, patients with persistent *S aureus* or *E faecalis* bacteremia, prosthetic valves, or cardiac devices should be characterized as high risk. They may require TEE imaging as a first-line investigation due its higher diagnostic accuracy. If initial TTE is negative and bacteremia persists in high-risk patients, then TEE should be performed within 5 days and consideration given to adjuvant imaging modalities. MDCT can be used to better visualize prosthetic vegetations, abscesses, pseudoaneurysms, and dehiscence. FDG-PET/CT may be used for patients with prosthetic valves or cardiac implantable electronic devices.

If a low-risk patient has a negative TTE, the clinician should look for alternative diagnoses, ie, other than infective endocarditis. If clinical suspicion for infective endocarditis increases during the clinical evaluation, TEE should be conducted. If this yields a negative result, TEE should be repeated in 7 to 10 days.

■ CASE CONCLUDED

Due to ongoing clinical suspicion for prosthetic aortic valve infective endocarditis, despite apparently unremarkable echocardiographic imaging, adjuvant advanced imaging with dedicated cardiac CT and FDG-PET/CT were pursued (**Figure 2**). These studies helped confirm the diagnosis of prosthetic aortic valve infective endocarditis. The patient underwent re-do cardiac surgery successfully. At follow-up, the patient completed the course of antimicrobial therapy and was clinically well.

■ DISCLOSURES

The authors report no relevant financial relationships which, in the context of their contributions, could be perceived as a potential conflict of interest.

REFERENCES

1. McDonald JR. Acute infective endocarditis. *Infect Dis Clin North Am* 2009; 23(3):643–664. doi:10.1016/j.idc.2009.04.013
2. Murdoch DR, Corey GR, Hoen B, et al. Clinical presentation, etiology, and outcome of infective endocarditis in the 21st century: the International Collaboration on Endocarditis-Pro prospective Cohort Study. *Arch Intern Med* 2009; 169(5):463–473. doi:10.1001/archinternmed.2008.603
3. Li JS, Sexton DJ, Mick N, et al. Proposed modifications to the Duke criteria for the diagnosis of infective endocarditis. *Clin Infect Dis* 2000; 30(4):633–638. doi:10.1086/313753
4. Baddour LM, Wilson WR, Bayer AS, et al. Infective endocarditis in adults: diagnosis, antimicrobial therapy, and management of complications: a scientific statement for healthcare professionals from the American Heart Association. *Circulation* 2015; 132(15):1435–1486. doi:10.1161/CIR.0000000000000296
5. Khatib R, Sharma M. Echocardiography is dispensable in uncomplicated *Staphylococcus aureus* bacteremia. *Medicine (Baltimore)* 2013; 92(3):182–188. doi:10.1097/MD.0b013e318294a710
6. Prendergast BD. Diagnosis of infective endocarditis. *BMJ* 2002; 325(7369):845–846. doi:10.1136/bmj.325.7369.845
7. Habib G, Badano L, Tribouilloy C, et al. Recommendations for the practice of echocardiography in infective endocarditis. *Eur J Echocardiogr* 2010; 11(2):202–219. doi:10.1093/ejehocardiography/jeq004
8. Sochowski RA, Chan KL. Implication of negative results on a monoplane transesophageal echocardiographic study in patients with suspected infective endocarditis. *J Am Coll Cardiol* 1993; 21(1):216–221. doi:10.1016/0735-1097(93)90739-n
9. Baddour LM, Epstein AE, Erickson CC, et al. Update on cardiovascular implantable electronic device infections and their management: a scientific statement from the American Heart Association. *Circulation* 2010; 121(3):458–477. doi:10.1161/CIRCULATIONAHA.109.192665
10. Habib G, Lancellotti P, Antunes MJ, et al. 2015 ESC guidelines for the management of infective endocarditis: The Task Force for the Management of Infective Endocarditis of the European Society of Cardiology (ESC). Endorsed by: European Association for Cardio-Thoracic Surgery (EACTS), the European Association of Nuclear Medicine (EANM). *Eur Heart J* 2015; 36(44):3075–3128. doi:10.1093/eurheartj/ehv319
11. Barton T, Moir S, Rehmani H, Woolley I, Korman TM, Stuart RL. Low rates of endocarditis in healthcare-associated *Staphylococcus aureus* bacteremia suggest that echocardiography might not always be required. *Eur J Clin Microbiol Infect Dis* 2016; 35(1):49–55. doi:10.1007/s10096-015-2505-8
12. Nishimura RA, Otto CM, Bonow RO, et al. 2014 AHA/ACC guideline for the management of patients with valvular heart disease: executive summary: a report of the American College of Cardiology/American Heart Association Task Force on Practice Guidelines. *J Am Coll Cardiol* 2014; 63(22):2438–2488. doi:10.1016/j.jacc.2014.02.537
13. Joseph JP, Meddows TR, Webster DP, et al. Prioritizing echocardiography in *Staphylococcus aureus* bacteraemia. *J Antimicrob Chemother* 2013; 68(2):444–449. doi:10.1093/jac/dks408
14. Eudailey K, Lewey J, Hahn RT, George I. Aggressive infective endocarditis and the importance of early repeat echocardiographic imaging. *J Thorac Cardiovasc Surg* 2014; 147(3):e26–e28. doi:10.1016/j.jtcvs.2013.10.069
15. Erbel R, Rohmann S, Drexler M, et al. Improved diagnostic value of echocardiography in patients with infective endocarditis by transoesophageal approach. A prospective study. *Eur Heart J* 1988; 9(1):43–53. PMID:3345769
16. Shively BK, Gurule FT, Roldan CA, Leggett JH, Schiller NB. Diagnostic value of transesophageal compared with transthoracic echocardiography in infective endocarditis. *J Am Coll Cardiol* 1991; 18(2):391–397. doi:10.1016/0735-1097(91)90591-v
17. Shapiro SM, Young E, De Guzman S, et al. Transesophageal echocardiography in diagnosis of infective endocarditis. *Chest* 1994; 105(2):377–382. doi:10.1378/chest.105.2.377
18. Daniel WG, Mügge A, Martin RP, et al. Improvement in the diagnosis of abscesses associated with endocarditis by transesophageal echocardiography. *N Engl J Med* 1991; 324(12):795–800. doi:10.1056/NEJM199103213241203
19. Evangelista A, Gonzalez-Alujas MT. Echocardiography in infective endocarditis. *Heart* 2004; 90(6):614–617. doi:10.1136/hrt.2003.029868
20. Reynolds HR, Jagen MA, Tunick PA, Kronzon I. Sensitivity of trans-thoracic versus transesophageal echocardiography for the detection of native valve vegetations in the modern era. *J Am Soc Echocardiogr* 2003; 16(1):67–70. doi:10.1067/mje.2003.43
21. Habets J, Tanis W, Reitsma JB, et al. Are novel non-invasive imaging techniques needed in patients with suspected prosthetic heart valve endocarditis? A systematic review and meta-analysis. *Eur Radiol* 2015; 25(7):2125–2133. doi:10.1007/s00330-015-3605-7
22. San S, Ravis E, Tessonier L, et al. Prognostic value of 18F-fluorodeoxyglucose positron emission tomography/computed tomography in infective endocarditis. *J Am Coll Cardiol* 2019; 74(8):1031–1040. doi:10.1016/j.jacc.2019.06.050
23. Vilacosta I, Sarriá C, San Román JA, et al. Usefulness of transesophageal echocardiography for diagnosis of infected prosthetic permanent pacemakers. *Circulation* 1994; 89(6):2684–2687. doi:10.1161/01.cir.89.6.2684
24. Narducci ML, Pelargonio G, Russo E, et al. Usefulness of intracardiac echocardiography for the diagnosis of cardiovascular implantable electronic device-related endocarditis. *J Am Coll Cardiol* 2013; 61(13):1398–1405. doi:10.1016/j.jacc.2012.12.041
25. Graziosi M, Nanni C, Lorenzini M, et al. Role of 18F-FDG PET/CT in the diagnosis of infective endocarditis in patients with an implanted cardiac device: a prospective study. *Eur J Nucl Med Mol Imaging* 2014; 41(8):1617–1623. doi:10.1007/s00259-014-2773-z
26. Rasmussen RV, Høst U, Arpi M, et al. Prevalence of infective endocarditis in patients with *Staphylococcus aureus* bacteraemia: the value of screening with echocardiography. *Eur J Echocardiogr* 2011; 12(6):414–420. doi:10.1093/ejehocardiography/jeq023
27. Barton TL, Mottram PM, Stuart RL, Cameron JD, Moir S. Transthoracic echocardiography is still useful in the initial evaluation of patients with suspected infective endocarditis: evaluation of a large cohort at a tertiary referral center. *Mayo Clin Proc* 2014; 89(6):799–805. doi:10.1016/j.mayocp.2014.02.013
28. Bouza E, Kestler M, Beca T, et al. The NOVA score: a proposal to reduce the need for transesophageal echocardiography in patients with enterococcal bacteremia. *Clin Infect Dis* 2015; 60(4):528–535. doi:10.1093/cid/ciu872
29. Dahl A, Lauridsen TK, Arpi M, et al. Risk factors of endocarditis in patients with *Enterococcus faecalis* bacteremia: external validation of the NOVA score. *Clin Infect Dis* 2016; 63(6):771–775. doi:10.1093/cid/ciw383
30. Berdejo J, Shibayama K, Harada K, et al. Evaluation of vegetation size and its relationship with embolism in infective endocarditis: a real-time 3-dimensional transesophageal echocardiography study. *Circ Cardiovasc Imaging* 2014; 7(1):149–154. doi:10.1161/CIRCIMAGING.113.000938
31. Goddard AJ, Tan G, Becker J. Computed tomography angiography for the detection and characterization of intra-cranial aneurysms: current status. *Clin Radiol* 2005; 60(12):1221–1236. doi:10.1016/j.crad.2005.06.007
32. Feuchtner GM, Stolzmann P, Dichtl W, et al. Multislice computed tomography in infective endocarditis: comparison with transesophageal echocardiography and intraoperative findings. *J Am Coll Cardiol* 2009; 53(5):436–444. doi:10.1016/j.jacc.2008.01.077
33. Kim IC, Chang S, Hong GR, et al. Comparison of cardiac computed tomography with transesophageal echocardiography for identifying vegetation and intra-cardiac complications in patients with infective endocarditis in the era of 3-dimensional images. *Circ Cardiovasc Imaging* 2018; 11(3):e006986. doi:10.1161/CIRCIMAGING.117.006986
34. Saby L, Laas O, Habib G, et al. Positron emission tomography/computed tomography for diagnosis of prosthetic valve endocarditis: increased valvular 18F-fluorodeoxyglucose uptake as a novel major

- criterion. *J Am Coll Cardiol* 2013; 61(23):2374–2382. doi:10.1016/j.jacc.2013.01.092
35. Merhej V, Cammilleri S, Piquet P, Casalta JP, Raoult D. Relevance of the positron emission tomography in the diagnosis of vascular graft infection with *Coxiella burnetii*. *Comp Immunol Microbiol Infect Dis* 2012; 35(1):45–49. doi:10.1016/j.cimid.2011.09.010
36. Wang TKM, Sánchez-Nadales A, Igbinomwanhia E, Cremer P, Griffin B, Xu B. Diagnosis of infective endocarditis by subtype using 18F-fluorodeoxyglucose positron emission tomography/computed tomography: a contemporary meta-analysis. *Circ Cardiovasc Imaging* 2020; 13(6):e010600. doi:10.1161/CIRCIMAGING.120.010600
37. Thuny F, Gaubert JY, Jacquier A, et al. Imaging investigations in infective endocarditis: current approach and perspectives. *Arch Cardiovasc Dis* 2013; 106(1):52–62. doi:10.1016/j.acvd.2012.09.004
38. Ricciardi A, Sordillo P, Ceccarelli L, et al. 18-Fluoro-2-deoxyglucose positron emission tomography-computed tomography: an additional tool in the diagnosis of prosthetic valve endocarditis. *Int J Infect Dis* 2014; 28:219–224. doi:10.1016/j.ijid.2014.04.028

Address: Bo Xu, MD, FACC, FRACP, FASE, Section of Cardiovascular Imaging, Robert and Suzanne Tomsich Department of Cardiovascular Medicine, J1-5, Cleveland Clinic, 9500 Euclid Avenue, Cleveland, OH 44195; xub@ccf.org