

## SYMPTOMS TO DIAGNOSIS

GREGORY W. RUTECKI, MD, Section Editor

Lauren M. Granat, DO, MS

Department of Internal Medicine,  
Cleveland Clinic

Achintya D. Singh, MBBS, MD

Department of Internal Medicine,  
Cleveland Clinic

Matthew Cortese, MD, MPH

Department of Hematology and Medical  
Oncology, Taussig Cancer Institute, Cleveland Clinic

Vicente Velez, MD, FACP, FHM

Department of Hospital Medicine, Cleveland Clinic;  
Assistant Professor, Cleveland Clinic Lerner College  
of Medicine of Case Western Reserve University,  
Cleveland, OH

Alan Lichtin, MD

Department of Hematology and Medical Oncology, Taussig  
Cancer Institute, Cleveland Clinic; Associate  
Professor, Cleveland Clinic Lerner College of Medicine  
of Case Western Reserve University, Cleveland, OH

# Severe thrombocytopenia in a patient with otherwise asymptomatic COVID-19

TABLE 1

## The patient's complete blood cell count

Test	Patient's value <sup>a</sup>	Reference range
White blood cell count	$7.03 \times 10^9/L$	3.7–11.0
Red blood cell count	$4.46 \times 10^{12}/L$	3.90–5.20
Hemoglobin	14.4 g/dL	11.5–15.5
Hematocrit	41.2%	36%–46%
Platelet count	<b><math>3.0 \times 10^9/L</math></b>	150–400
Mean corpuscular volume	92.4 fL	80–100
Mean corpuscular hemoglobin	32.3 pG	26.0–34.0
Mean corpuscular hemoglobin concentration	35.0 g/dL	30.5–36.0
Mean platelet volume	11.7 fL	9.0–12.7
Red cell distribution width coefficient of variance	11.9%	11.5%–15.0%
Reticulocytes	$84 \times 10^9/L$ 1.9%	18–100 0.4%–2.0%
Neutrophils	$4.59 \times 10^9/L$ 65.3%	1.45–7.50 55%–70%
Lymphocytes	$1.77 \times 10^9/L$ 25.2%	1.00–4.00 20%–40%
Monocytes	$0.57 \times 10^9/L$ <b>8.1%</b>	< 0.87 2%–8%
Eosinophils	$0.09 \times 10^9/L$ 1.3%	< 0.46 1%–4%
Basophils	< $0.03 \times 10^9/L$ 0.1%	< 0.11 0.5%–1%
Nucleated red blood cells	< $0.01 \times 10^9/L$ 0%	< 0.01 0%

<sup>a</sup>Abnormal results are shown in bold.

A 35-YEAR-OLD WOMAN with a medical history significant only for recently diagnosed essential hypertension presented to an urgent-care facility with easy bruising, petechiae, and gingival bleeding. She said that she had noticed large ecchymoses from minimal trauma on her upper and lower extremities for the past week, as well as a petechial rash. A complete blood cell count at that time revealed a platelet count of  $3.0 \times 10^9/L$  (reference range 150–400  $\times 10^9/L$ ), and she was told to go to the nearest emergency department.

In the emergency department, repeat testing confirmed that her platelet count was indeed only  $3.0 \times 10^9/L$ , while the rest of her complete blood cell count values were unremarkable (Table 1). Her blood pressure was 167/104 mm Hg, heart rate 80 beats per minute, respiratory rate 16 breaths per minute, and oxygen saturation 99% on room air.

## CAUSES OF THROMBOCYTOPENIA

1 All of the following are possible causes of thrombocytopenia except for which one?

- ☐ Thrombotic thrombocytopenic purpura
- ☐ Disseminated intravascular coagulation
- ☐ Immune thrombocytopenic purpura
- ☐ Glucose-6-phosphate dehydrogenase deficiency
- ☐ Hemolytic uremic syndrome

The causes of thrombocytopenia can be divided into disorders of decreased platelet production and disorders of increased platelet consumption or destruction.

Disorders of decreased production include

TABLE 2

**Differential diagnosis for thrombocytopenia**

Disease	Thrombocytopenia	Hemolysis <sup>a</sup>	ADAMTS13	PT/PTT	Fibrinogen	D-dimer
Thrombotic thrombocytopenic purpura	Yes	Yes	Low	Normal	Normal	Normal
Hemolytic uremic syndrome	Yes	Yes	Normal	Normal	Normal	Normal
Disseminated intravascular coagulation	Yes	Yes	Normal	Prolonged	Low	High
Immune thrombocytopenic purpura	Yes	No	Normal	Normal	Normal	Normal

<sup>a</sup>Anemia, increased lactate dehydrogenase, decreased haptoglobin, increased reticulocyte count, increased unconjugated bilirubin.

ADAMTS13 = a disintegrin and metalloproteinase with a thrombospondin type 1 motif, member 13; PT/PTT = prothrombin time and partial thromboplastin time

bone marrow diseases, such as myelodysplastic syndromes and aplastic anemia, and liver disease.

Disorders of platelet destruction or consumption include immune thrombocytopenic purpura and hemolytic processes. Thrombocytopenia can also occur during massive fluid resuscitation or blood transfusion without the transfusion of platelets, known as posttransfusion purpura, or during hypersplenism.<sup>1</sup>

**Thrombotic thrombocytopenic purpura**

Thrombotic thrombocytopenic purpura is caused by a genetic or acquired deficiency of ADAMTS13 (a disintegrin and metalloproteinase with a thrombospondin type 1 motif, member 13).

ADAMTS13 is a protease responsible for cleaving von Willebrand factor during times of high shear stress and resultant platelet adhesion, preventing large von Willebrand factor multimers from accumulating. A deficiency of ADAMTS13 leads to accumulation of large von Willebrand factor multimers that platelets then attach to, leading to widespread microvascular thrombosis.<sup>1,2</sup>

The clinical features seen with thrombotic thrombocytopenic purpura are widespread and may include symptoms of thrombocytopenia and hemolytic anemia; renal dysfunc-

TABLE 3

**The patient's chemistry panel**

Test	Patient's value <sup>a</sup>	Reference range
Sodium	141 mmol/L	136–144
Potassium	<b>3.5 mmol/L</b>	3.7–5.1
Chloride	105 mmol/L	97–105
Carbon dioxide	25 mmol/L	22–30
Blood urea nitrogen	8 mg/dL	7–21
Creatinine	<b>0.97 mg/dL</b>	0.58–0.96
Glucose	<b>69 mg/dL</b>	74–99
Total protein	6.9 g/dL	6.3–8.0
Calcium	9.4 mg/dL	8.5–10.2
Total bilirubin	4.1 g/dL	3.9–4.9
Conjugated bilirubin	0.3 mg/dL	0.2–1.3
Alkaline phosphatase	56 U/L	34–123
Alanine aminotransferase	22 U/L	7–38
Aspartate aminotransferase	19 U/L	13–35
Anion gap	11 mmol/L	9–18

<sup>a</sup>Abnormal results are shown in bold.

tion; neurologic impairment, including headaches, confusion, or even stroke and seizures; gastrointestinal symptoms such as nausea, vomiting, diarrhea, and abdominal pain; and

**TABLE 4**

## The patient's other blood tests

Test	Patient's value <sup>a</sup>	Reference range
Immunoglobulin G	1,120 g/L	717–1,411
Immunoglobulin A	279 g/L	78–391
Immunoglobulin M	123 g/L	53–334
Ferritin	159 ng/mL	14.7–205.1
Interleukin 6	< 2.2 pg/mL	< 6.0
C-creative protein	0.1 mg/L	< 0.9
Creatine kinase	122 U/L	42–196
Troponin T	< 0.010 ng/mL	0.000–0.029
D-dimer	<b>790 µg/mL</b>	< 500
Fibrinogen	<b>440 mg/dL</b>	200–400
International normalized ratio	1.3	0.9–1.3
Prothrombin time	10.3 s	9.7–13.0
Partial thromboplastin time	25.4 s	23.0–32.4
Haptoglobin	180 mg/dL	81–238
Lactate dehydrogenase	<b>304 U/L</b>	135–214
Coombs	Negative	Negative
Hepatitis B surface antigen	Negative	Negative
Hepatitis B surface antibody	<b>Positive</b>	Negative
Hepatitis B core antibody, total	Negative	Negative
Hepatitis C antibody 1A	Negative	Negative
HIV1/2 antibodies	Negative	Negative
Syphilis	Nonreactive	Nonreactive

<sup>a</sup>Abnormal results are shown in bold.

fever. Laboratory findings include those typically seen in hemolytic anemia, including low haptoglobin, increased lactate dehydrogenase, and an increased reticulocyte count, as well as thrombocytopenia, schistocytes on peripheral blood smear, and possibly increased creatinine with proteinuria, hematuria, or both.<sup>2</sup>

The PLASMIC score<sup>3</sup> can be used to predict the likelihood of ADAMTS13 deficiency in patients with thrombocytopenia and schistocytes. It is calculated by awarding 1 point for each of the following features, if present:

- Platelet count < 30 × 10<sup>9</sup>/L
- Hemolysis (reticulocyte count > 2.5%, undetectable haptoglobin, or indirect bilirubin > 2 mg/dL)
- No active cancer

- No solid organ or stem cell transplant
- Mean corpuscular volume < 90 fL
- International normalized ratio < 1.5
- Creatinine < 2.0 mg/dL.

Patients with scores of 5 or higher should be empirically treated for thrombotic thrombocytopenic purpura with plasma exchange, as this condition can be life-threatening if untreated.<sup>4</sup>

## Disseminated intravascular coagulation

Disseminated intravascular coagulation is a clinical syndrome in which the processes of both coagulation and fibrinolysis are inappropriately activated, leading to bleeding, clotting, or both. The coagulation and fibrinolytic processes may be inappropriately activated during sepsis or in other conditions such as pregnancy or malignancy. Typical laboratory findings include prolonged prothrombin time and partial thromboplastin time, low levels of fibrinogen, increased levels of D-dimer, and findings consistent with microangiopathic hemolytic anemias.<sup>5,6</sup>

## Immune thrombocytopenic purpura

Immune thrombocytopenic purpura is an acquired, isolated thrombocytopenia modulated by platelet autoantibodies, with a platelet count less than 100 × 10<sup>9</sup>/L.<sup>7</sup> It is a diagnosis of exclusion, with clinical features of thrombocytopenia ranging from petechiae, mucosal bleeding, and easy bruising to internal bleeding and hemorrhagic stroke. Other than a low platelet count, laboratory data are typically normal.

Primary immune thrombocytopenic purpura is due to production of autoantibodies against platelets, whereas the secondary form can be triggered by many different conditions, including viral illnesses and autoimmune diseases.<sup>7,8</sup>

## Glucose-6-phosphate dehydrogenase deficiency

Glucose-6 phosphate dehydrogenase deficiency is an X-linked genetic disorder that can lead to hemolytic anemia after ingestion of certain foods or drugs. Glucose-6 phosphate dehydrogenase is an enzyme that protects red blood cells from oxidative injury, and lack of it renders red blood cells susceptible to oxidative damage. As a result, red blood cells are lysed during times of oxidative stress.<sup>9</sup>

Laboratory data reveal a hemolytic process,

with schistocytes and bite cells on peripheral blood smear, decreased levels of haptoglobin, and increased lactate dehydrogenase. However, platelet counts and coagulation studies are typically unaffected.<sup>10</sup> Therefore, this is the correct answer to the question above.

### Hemolytic uremic syndrome

Hemolytic uremic syndrome is a thrombotic microangiopathy that is caused by infection with Shiga toxin-producing *Escherichia coli* and leads to acute kidney injury, hemolytic anemia, and thrombocytopenia. Clinical features typically include abdominal pain and a diarrheal illness, and laboratory data reveals a hemolytic process with increased lactate dehydrogenase and decreased levels of haptoglobin, schistocytes on peripheral blood smear, thrombocytopenia, normal ADAMTS13 levels, normal prothrombin time and partial thromboplastin time, and possibly rising creatinine, hematuria, proteinuria, and hypertension.<sup>11</sup>

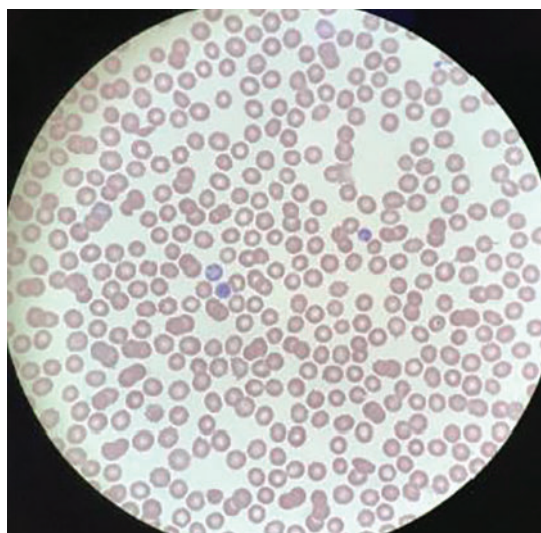
The laboratory findings commonly seen in thrombotic thrombocytopenic purpura, hemolytic uremic syndrome, disseminated intravascular coagulation, and immune thrombocytopenic purpura are summarized in Table 2.

### ■ BACK TO THE PATIENT

The patient's complete blood cell count (Table 1), chemistry panel (Table 3), and other tests (Table 4) excluded other differential diagnostic considerations, including thrombotic thrombocytopenic purpura, disseminated intravascular coagulation, and other hemolytic processes. She had not received any transfusions (which would have suggested posttransfusion purpura), and she had not received any medications commonly associated with drug-induced thrombocytopenic purpura, such as beta-lactam antibiotics. A peripheral blood smear revealed thrombocytopenia and normal-appearing white and red blood cells, indicative of immune thrombocytopenic purpura (Figure 1).

### ■ CAUSES OF SECONDARY IMMUNE THROMBOCYTOPENIC PURPURA

**2** All of the following are causes of secondary immune thrombocytopenic purpura except which one?



**Figure 1.** On the patient's peripheral blood smear, no platelets were visible.

- ☐ Human immunodeficiency virus
- ☐ Chronic obstructive pulmonary disease
- ☐ Systemic lupus erythematosus
- ☐ Hepatitis
- ☐ Chronic lymphocytic leukemia

Viral infections are often implicated in secondary immune thrombocytopenia, including hepatitis C, human immunodeficiency virus, many herpesviridae such as Epstein-Barr virus and cytomegalovirus, and others.<sup>12,13</sup> Autoimmune disorders such as systemic lupus erythematosus, rheumatoid arthritis, and hematologic malignancies can be implicated in immune thrombocytopenic purpura as well.

Chronic obstructive pulmonary disease, on the other hand, has not been documented as a cause of secondary immune thrombocytopenic purpura, although it can cause a reactive polycythemia as a result of chronic hypoxia.<sup>14</sup> Therefore chronic obstructive pulmonary disease is the correct answer.

### ■ AN INTERESTING AND TIMELY PLOT TWIST

A nasal swab for SARS-CoV-2—the cause of coronavirus disease 2019 (COVID-19)—was ordered, as is currently standard practice for all of our admitted patients, and her test was positive by polymerase chain reaction assay. The patient said she had no shortness of breath, cough, fevers or chills, diarrhea, anosmia, or dysgeusia on admission or in the past weeks or

**A young woman, seemingly healthy, presents with easy bruising**

TABLE 5

Reported cases of COVID-19-associated immune thrombocytopenic purpura

Case	Presenting symptoms	COVID symptoms present before or on admission?	Hospital day of decrease in platelet count	Initial platelet count ( $\times 10^9/L$ )	First ITP intervention	Platelet count after first ITP intervention ( $\times 10^9/L$ )	Second ITP intervention (if applicable)	Platelet count after second ITP intervention ( $\times 10^9/L$ )
Hindilerdin et al <sup>22</sup>	Easy bruising, fatigue, fever, dry cough	Yes	Day 0	10	IVIg 1 g/kg $\times$ 2 days	25	Prednisolone 1 mg/kg/day $\times$ 10 days	100
Tsao et al <sup>23</sup>	Rash, purple lesions in mouth, bruising	Yes	Day 0	5	IVIg 1 g/kg once	320	N/A	N/A
Artru et al <sup>24</sup>	Dyspnea, fever, cough, asthenia	Yes	Day 4	1	IVIg 0.4 g/kg $\times$ 5 days Dexamethasone 40 mg/day $\times$ 4 days	30	Dexamethasone 40 mg/day $\times$ 4 days	75
Bennett et al <sup>25</sup>	Fever, dyspnea, diarrhea, cough	Yes	Day 0	< 3	IVIg 1 g/kg $\times$ 2 days	105	N/A	N/A
Levesque et al <sup>26</sup>	Dyspnea, dry cough, fever	Yes	Day 20	23	IVIg 1 g/kg $\times$ 2 days Dexamethasone 40 mg $\times$ 4 days	< 10	Romiplostim daily $\times$ 10 days Vincristine $\times$ 1 day Methylprednisolone 500 mg IV $\times$ 4 days	178
Murt et al <sup>27</sup>	Petechiae, easy bruising	Yes	Day 0	9	IVIg 2 g/kg $\times$ 2 days	54	N/A	N/A
Bomhof et al <sup>28</sup>								
Patient 1	Oral mucosal petechiae, spontaneous skin hematomas	Yes	Day 0	< 3	Platelet transfusion IVIg 1 g/kg $\times$ 2 days	47	Dexamethasone	51
Patient 2	Petechiae, bleeding from hemorrhoids, epistaxis	Yes	Day 0	2	Platelet transfusion Dexamethasone 40 mg daily $\times$ 4 days	2	IVIg	32
Patient 3	Fever, coughing, dyspnea	Yes	Day 12	3	N/A	N/A	N/A	N/A
Granat et al (current case)	None	N/A	0	3	Platelet transfusion Dexamethasone 40 mg $\times$ 1 day	67	Prednisone 1 mg/kg $\times$ 4 days	268

ITP = immune thrombocytopenic purpura; IVIg = intravenous immunoglobulin; N/A = not available

months. She did not need supplemental oxygen or intensive care. She said she had been compliant with mask-wearing and social distancing, but she worked for a cleaning compa-

ny and had been in contact with many people and potentially contaminated surfaces.

In view of the pertinent negative findings described above and the temporal relation-



ship between her symptoms and her positive SARS-CoV-2 test, we concluded that her otherwise-asymptomatic COVID-19 was the trigger for her severe thrombocytopenia.

### ■ TREATMENT OF SEVERE SECONDARY IMMUNE THROMBOCYTOPENIA

**3** All of the following are treatment options for severe secondary immune thrombocytopenic purpura except which one?

- ☐ Glucocorticoids
- ☐ Intravenous immunoglobulin
- ☐ Rituximab
- ☐ Splenectomy
- ☐ Plasma exchange

First-line treatment for severe secondary immune thrombocytopenia includes glucocorticoids, intravenous immunoglobulin, or both. Both are thought to interfere with destruction of platelets.<sup>15</sup> An additional first-line treatment is anti-D immunoglobulin. Second-line treatments include thrombopoietin receptor agonists, splenectomy, and rituximab.<sup>16</sup>

Plasma exchange is considered a first-line treatment for thrombotic thrombocytopenic purpura and serves to replace the deficient ADAMTS13 molecule. However, it is not typically used to treat immune thrombocytopenic purpura,<sup>16</sup> and therefore this is the correct answer.

### ■ BACK TO THE PATIENT

In the emergency department, the patient received 1 dose of dexamethasone 40 mg and 2 units of platelets. She was admitted to the hospital for 2 days, during which she received 2 doses of oral prednisone 1 mg/kg/day. She was discharged home on the third day with instructions to take an additional 2 doses of prednisone 1 mg/kg/day. A repeat complete blood count after she finished her course of

steroids, 5 days after her initial presentation, revealed a platelet count of  $268 \times 10^9/L$ .

### ■ HEMATOLOGIC COMPLICATIONS OF COVID-19

The thrombotic complications of COVID-19 have been well documented.<sup>17–20</sup> Thrombocytopenia can occur with COVID-19 by various mechanisms, including disseminated intravascular coagulation and sepsis.<sup>21</sup>

In addition, there have been multiple case reports of COVID-19–induced severe secondary thrombocytopenia (Table 5).<sup>22–28</sup> The patients all had typical symptoms of COVID-19 such as cough, fever, or shortness of breath. The timing of thrombocytopenia varied, with some patients developing it early in their hospital course and others developing it days after admission. All patients, excluding 1 who died shortly after developing thrombocytopenia, were treated with intravenous immunoglobulin, corticosteroids, or both, with hematologic recovery in all reported cases. To our knowledge, however, ours is the first documented case of a SARS-CoV-2–positive patient presenting with symptomatic severe thrombocytopenia but no COVID-19 symptoms.

This patient's experience further reveals that SARS-CoV-2 can cause severe secondary immune thrombocytopenia, and is unique in showing that thrombocytopenia can be the sole presenting disorder in COVID-19. Hematologic monitoring of COVID-19 patients is becoming increasingly important, especially with respect to hypercoagulable complications,<sup>29</sup> but attention must also be directed to platelet counts. Conversely, patients presenting with isolated thrombocytopenia should be screened for SARS-CoV-2 infection. ■

### ■ DISCLOSURES

The authors report no relevant financial relationships which, in the context of their contributions, could be perceived as a potential conflict of interest.

### ■ REFERENCES

- Smock KJ, Perkins SL. Thrombocytopenia: an update. *Int J Lab Hematol* 2014; 36(3):269–278. doi:10.1111/ijlh.12214
- Zander CB, Cao W, Zheng XL. ADAMTS13 and von Willebrand factor interactions. *Curr Opin Hematol* 2015; 22(5):452–459. doi:10.1097/MOH.0000000000000169
- Bendapudi PK, Hurwitz S, Fry A, et al. Derivation and external validation of the PLASMIC score for rapid assessment of adults with thrombotic microangiopathies: a cohort study. *Lancet Haematol* 2017; 4:e157–164. doi:10.1016/S2352-3026(17)30026-1
- Paydary K, Banwell E, Tong J, Chen Y, Cuker A. Diagnostic accuracy of the PLASMIC score in patients with suspected thrombotic thrombocytopenic purpura: a systematic review and meta-analysis. *Transfusion* 2020; 60(9):2047–2057. doi:10.1111/trf.15954
- Page E E, Kremer Hovinga JA, Terrell DR, Vesely SK, George JN. Thrombotic thrombocytopenic purpura: diagnostic criteria, clinical features, and long-term outcomes from 1995 through 2015. *Blood Adv* 2017; 1(10):590–600. doi:10.1182/bloodadvances.2017005124
- Toh CH, Alhamdi Y, Abrams ST. Current pathological and laboratory considerations in the diagnosis of disseminated intravascular coagulation. *Ann Lab Med* 2016; 36(6):505–512.

**Her platelet count:**  
 **$3 \times 10^9/L$**   
**(reference range 150–400)**

- doi:10.3343/alm.2016.36.6.505
7. **Taylor FB Jr, Toh CH, Hoots WK, Wada H, Levi M.** Towards definition, clinical and laboratory criteria, and a scoring system for disseminated intravascular coagulation. *Thromb Haemost* 2001; 86(5):1327–1330. pmid:11816725
8. **Rodeghiero F, Stasi R, Gernsheimer T.** Standardization of terminology, definitions and outcome criteria in immune thrombocytopenic purpura of adults and children: report from an international working group. *Blood* 2009; 113(11):2386–2393. doi:10.1182/blood-2008-07-162503
9. **Liebman HA.** Viral-associated immune thrombocytopenic purpura. *Hematology Am Soc Hematol Educ Program* 2008;212–218. doi:10.1182/asheducation-2008.1.212
10. **Beutler E.** G6PD: population genetics and clinical manifestations. *Blood Rev* 1996; 10(1):45–52. doi:10.1016/s0268-960x(96)90019-3
11. **Edwards CQ.** Anemia and the liver. Hepatobiliary manifestations of anemia. *Clin Liver Dis* 2002; 6(4):891–907. doi:10.1016/s1089-3261(02)00050-8
12. **Ruggenti P, Noris M, Remuzzi G.** Thrombotic microangiopathy, hemolytic uremic syndrome, and thrombotic thrombocytopenic purpura. *Kidney Int* 2001; 60(3):831–846. doi:10.1046/j.1523-1755.2001.060003831.x
13. **Cines DB, Bussel JB, Liebman HA, Luning Prak ET.** The ITP syndrome: pathogenic and clinical diversity. *Blood* 2009; 113(26):6511–6521. doi:10.1182/blood-2009-01-129155
14. **Chambellan A, Chailleux E, Similowski T, ANTADIR Observatory Group.** Prognostic value of the hematocrit in patients with severe COPD receiving long-term oxygen therapy. *Chest* 2005; 128(3):1201–1208. doi:10.1378/chest.128.3.1201
15. **Mizutani H, Furubayashi T, Imai Y, et al.** Mechanisms of corticosteroid action in immune thrombocytopenic purpura (ITP): experimental studies using ITP-prone mice, (NZW x BXSB) F1. *Blood* 1992; 79(4):942–947. pmid:1737103
16. **Stasi R, Provan D.** Management of immune thrombocytopenic purpura in adults. *Mayo Clin Proc* 2004; 79(4):504–522. doi:10.4065/79.4.504
17. **Klok FA, Kruip MJHA, van der Meer NJM, et al.** Incidence of thrombotic complications in critically ill ICU patients with COVID-19. *Thromb Res* 2020; 191:145–147. doi:10.1016/j.thromres.2020.04.013
18. **Connors JM, Levy JH.** COVID-19 and its implications for thrombosis and anticoagulation. *Blood* 2020; 135(23):2033–2040. doi:10.1182/blood.202006000
19. **Ackermann M, Verleden SE, Kuehnel M, et al.** Pulmonary vascular endothelialitis, thrombosis, and angiogenesis in covid-19. *N Engl J Med* 2020; 383(2):120–128. doi:10.1056/NEJMoa2015432
20. **Terpos E, Ntanasis-Stathopoulos I, Elalamy I, et al.** Hematological findings and complications of COVID-19. *Am J Hematol* 2020; 95(7):834–847. doi:10.1002/ajh.25829
21. **Leisman DE, Deutschman CS, Legrand M.** Facing COVID-19 in the ICU: vascular dysfunction, thrombosis, and dysregulated inflammation. *Intensive Care Med* 2020; 46(6):1105–1108. doi:10.1007/s00134-020-06059-6
22. **Hindilerden F, Yonal-Hindilerden I, Sevtap S, Kart-Yasar K.** Immune thrombocytopenia in a very elderly patient with covid-19. *Front Med (Lausanne)* 2020; 7:404. doi:10.3389/fmed.2020.00404
23. **Tsao HS, Chason HM, Fearon DM.** Immune thrombocytopenia (ITP) in a pediatric patient positive for SARS-CoV-2. *Pediatrics* 2020; 146(2):e20201419. doi:10.1542/peds.2020-1419
24. **Artru F, Alberio L, Moradpour D, Stalder G.** Acute immune thrombocytopenic purpura in a patient with COVID-19 and decompensated cirrhosis. *BMJ Case Rep* 2020; 13(7):e236815. doi:10.1136/bcr-2020-236815
25. **Bennett J, Brown C, Rouse M, Hoffmann M, Ye Z.** Immune thrombocytopenia purpura secondary to COVID-19. *Cureus* 2020; 12(7):e9083. doi:10.7759/cureus.9083
26. **Lévesque V, Millaire É, Corsilli D, Rioux-Massé B, Carrier F-M.** Severe immune thrombocytopenic purpura in critical COVID-19. *Int J Hematol* 2020; 112(5):746–750. doi:10.1007/s12185-020-02931-9
27. **Murt A, Eskazan AE, Yilmaz U, Ozkan T, Ar MC.** COVID-19 presenting with immune thrombocytopenia: a case report and review of the literature. *J Med Virol* 2020 Jun 4;10.1002/jmv.26138. doi:10.1002/jmv.26138
28. **Bomhof G, Mutsaers PGNJ, Leebeek FWG, et al.** COVID-19-associated immune thrombocytopenia. *Br J Haematol* 2020; 190(2): e61–e64. doi:10.1111/bjh.16850
29. **Liu Y, Sun W, Guo Y, et al.** Association between platelet parameters and mortality in coronavirus disease 2019: retrospective cohort study. *Platelets* 2020; 31(4):490–496. doi:10.1080/09537104.2020.1754383

**Address:** Lauren M. Granat, DO, MS, Department of Internal Medicine, Cleveland Clinic, 9500 Euclid Avenue, Cleveland, OH 44195; granatl2@ccf.org