

**JAMES A. BLUMENTHAL, PhD**

Department of Psychiatry and Behavioral Sciences,  
Duke University Medical Center, Durham, NC

# New frontiers in cardiovascular behavioral medicine: Comparative effectiveness of exercise and medication in treating depression

## ■ ABSTRACT

Exercise, considered a mainstay of cardiac rehabilitation, has been shown to reduce cardiac risk factors such as hyperlipidemia and hypertension. Growing evidence also suggests that exercise has beneficial effects on mental health, which is relevant for cardiac patients because of the prognostic significance of depression in patients with coronary heart disease (CHD). Depression has been associated with increased mortality and nonfatal cardiac events in patients with CHD; it is also associated with worse outcomes in patients who undergo coronary artery bypass graft surgery and those who have heart failure. The standard therapy for depression is pharmacologic treatment, often with second-generation antidepressants such as selective serotonin reuptake inhibitors. Despite their widespread use, antidepressants have only modest effects on depression for many patients compared with placebo controls. Exercise therapy, already an established component of cardiac rehabilitation, has potential efficacy as a treatment for depression in cardiac disease patients. Randomized controlled trials are needed to determine the clinical effects of exercise in this population and to compare the effects of exercise with those of antidepressants.

I am fortunate to be the recipient of the 2010 Bakken Institute Pioneer Award and feel especially honored to have my work recognized in this way. When informed that I was this year's recipient, it prompted me to reflect on the meaning of the term "pioneer," and how it related to me.

Dr. Blumenthal reported that he has no financial relationships that pose a potential conflict of interest with this article.

Supported by grants HL093374 and HL080664 from the National Heart, Lung, and Blood Institute. Based upon a presentation at the Cleveland Clinic Heart-Brain Summit, Las Vegas, NV, September 23, 2010.

doi:10.3949/ccjm.78.s1.06

## ■ WHAT IS A PIONEER?

According to *Merriam-Webster's Collegiate Dictionary*, a pioneer is one who (a) ventures into unknown or unclaimed territory to settle; and (b) opens up new areas of thought, research, or development. One requirement for any pioneer is that there be a frontier to explore. Thirty years ago, my colleagues and I began our investigations into cardiac rehabilitation (CR), which at the time we considered to be a new frontier for behavioral medicine.<sup>1</sup>

## ■ EXERCISE-BASED CARDIAC REHABILITATION

Historically, patients who suffered an acute myocardial infarction (AMI) were often discouraged from engaging in physical activity; patients were initially prescribed prolonged bed rest and told to avoid strenuous exercise.<sup>2</sup> In the early 1950s, armchair therapy was proposed<sup>3</sup> as an initial attempt to mobilize patients after a coronary event. Over the years, the value of physical exercise has been increasingly recognized and exercise is now considered to be the cornerstone of CR.<sup>4-7</sup> Today, exercise-based CR, involving aerobic exercise supplemented by resistance training, is offered by virtually all CR programs in the United States.<sup>8</sup> Proper medical management is also emphasized, along with dietary modification and smoking cessation, but exercise is the centerpiece of treatment.

Exercise has been shown to reduce traditional risk factors such as hypertension and hyperlipidemia,<sup>8</sup> attenuate cardiovascular responses to mental stress,<sup>9</sup> and reduce myocardial ischemia.<sup>10-12</sup> Although no single study has demonstrated definitively that exercise reduces morbidity in patients with coronary heart disease (CHD), pooling data across clinical trials has shown that exercise may reduce risk of fatal CHD events by 25%.<sup>13</sup> A recent, comprehensive meta-analysis by Jolliffe et al<sup>14</sup> reported a 27% reduction in all-cause mortality and 31% reduction in cardiac mortality.

Not only is exercise considered beneficial for medical outcomes, but is also recognized as an important factor in improved quality of life. Indeed, there has been increased interest in the value of exercise for improving not just physical health, but also mental health.<sup>15–17</sup> The mental health benefits of exercise are especially relevant for cardiac patients, as there is a growing literature documenting the importance of mental health, and, in particular the prognostic significance of depression, in patients with CHD.

### ■ PSYCHOSOCIAL RISK FACTORS: THE ROLE OF DEPRESSION IN CORONARY HEART DISEASE

There has long been an interest in psychosocial factors that contribute to the development and progression of CHD. More than three decades ago, researchers identified the type A behavior pattern as a risk factor for CHD.<sup>18</sup> When subsequent studies failed to confirm the association of type A with adverse health outcomes, researchers turned their attention to other possible psychosocial risk factors, including anger and hostility,<sup>19</sup> low social support,<sup>20</sup> and most recently, depression.<sup>21</sup> Indeed, the most consistent and compelling evidence is that clinical depression or elevated depressive symptoms in the presence of CHD increase the risk of fatal and nonfatal cardiac events and of all-cause mortality.<sup>22</sup>

Major depressive disorder (MDD) is a common and often chronic condition. Lifetime incidence estimates for MDD are approximately 12% in men and 20% in women.<sup>23</sup> In addition, MDD is marked by high rates of relapse, with 22% to 50% of patients suffering recurrent episodes within 6 months after recovery.<sup>24</sup> Furthermore, MDD is underrecognized and undertreated in older adults,<sup>25</sup> CHD patients, and, especially, minorities.<sup>26–28</sup>

Cross-sectional studies have documented a higher prevalence of depression in CHD patients than in the general population. Point estimates range from 14% to as high as 47%, with higher rates recorded most often in patients with unstable angina, heart failure (HF), and patients awaiting coronary artery bypass graft (CABG) surgery.<sup>29–36</sup>

#### Depression associated with poor outcomes

A number of prospective studies have found that depression is associated with increased risk for mortality or nonfatal cardiac events in a variety of CHD populations. The most compelling evidence for depression as a risk factor has come from studies in Montreal, Canada. Frasure-Smith and colleagues<sup>31</sup> assessed the impact of depression in 222 AMI patients,

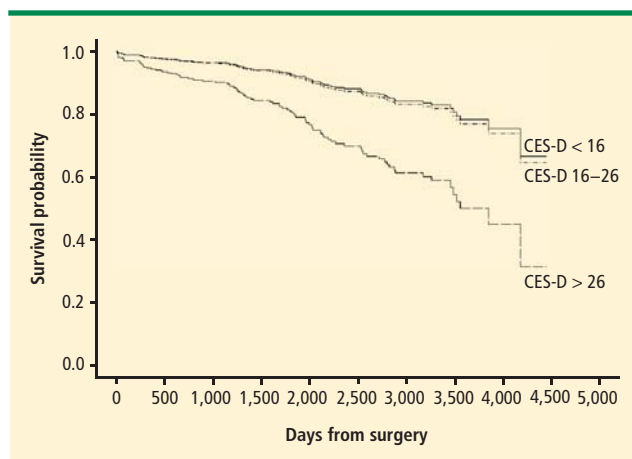
of whom 35 were diagnosed with MDD at the time of hospitalization. There were 12 deaths (six depressed and six nondepressed) over an initial 6-month follow-up period, representing more than a fivefold increased risk of death for depressed patients compared with nondepressed patients (hazard ratio, 5.7; 95% confidence interval [CI], 4.6 to 6.9). In a subsequent report,<sup>36</sup> in which 896 AMI patients were followed for 1 year, the presence of elevated depressive symptoms was associated with more than a threefold increased risk in cardiac mortality after controlling for other multivariate predictors of mortality (odds ratio, 3.29 for women; 3.05 for men).

Studies of patients with stable CHD also have reported significant associations between the presence of depression and worse clinical outcomes. For example, Barefoot et al<sup>37</sup> assessed 1,250 patients with documented CHD using the Zung self-report depression scale at the time of diagnostic coronary angiography and followed patients for up to 19.4 years. Results showed that patients with moderate to severe depression were at 69% greater risk for cardiac death and 78% greater risk for all-cause death.

The presence of depression also has been associated with worse clinical outcomes in patients undergoing CABG surgery.<sup>33,38–40</sup> For example, Duke researchers<sup>39</sup> assessed the effect of depression on mortality after CABG surgery in 817 patients followed for up to 12 years (mean, 5.2 years). Patients with moderate to severe depression at the time of surgery were found to have a two- to threefold increased risk of death, even after statistically controlling for age, gender, number of grafts, diabetes, smoking, left ventricular ejection fraction, and history of AMI (**Figure 1**).

#### Depression and heart failure outcomes

Patients with HF represent a particularly vulnerable group; a meta-analysis of depression in HF patients suggested that one in five patients are clinically depressed (range, 9% to 60%).<sup>41</sup> Not only is depression in HF patients associated with worse outcomes,<sup>42–46</sup> but recent evidence suggests that worsening of depressive symptoms, independent of clinical status, is related to worse outcomes. Sherwood et al<sup>46</sup> demonstrated that increased symptoms of depression, as indicated by higher scores on the Beck Depression Inventory (BDI) over a 1-year interval (BDI change [1-point] hazard ratio, 1.07; 95% CI, 1.02 to 1.12;  $P = .007$ ), were associated with higher risk of death or cardiovascular hospitalization after controlling for baseline depression (baseline BDI hazard ratio, 1.1; 95% CI, 1.06 to 1.14,  $P < .001$ ) and established risk factors, including HF



**FIGURE 1.** Patients with significant depressive symptoms assessed by the Center for Epidemiological Studies-Depression Scale (CES-D) were at increased risk of dying up to 12 years after they underwent coronary artery bypass graft surgery.<sup>39</sup>

Reprinted from *The Lancet* (Blumenthal JA, et al. Depression as a risk factor for mortality after coronary artery bypass surgery. *Lancet* 2003; 362:604–609), copyright © 2003, with permission from Elsevier. [www.sciencedirect.com/science/journal/01406736](http://www.sciencedirect.com/science/journal/01406736)

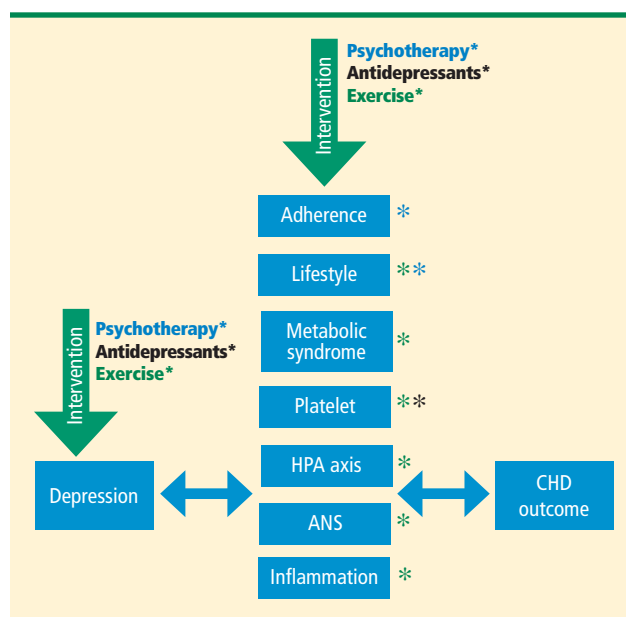
etiology, age, ejection fraction, N-terminal pro-B-type natriuretic peptides, and prior hospitalizations. Consequently, strategies to reduce depressive symptoms and prevent the worsening of depression may have important implications for improving cardiac health as well as for enhancing quality of life.

## MECHANISMS LINKING DEPRESSION AND CHD

A number of biobehavioral mechanisms have been hypothesized to underlie the relationship between depression and CHD. There is evidence that depression is associated with traditional CHD risk factors such as hypertension, diabetes, and insulin resistance,<sup>47,48</sup> as well as changes in platelet reactivity,<sup>49</sup> dysregulation of the autonomic nervous system<sup>50</sup> and hypothalamic pituitary adrenal axis,<sup>51</sup> and alterations in immune response and inflammation.<sup>52</sup> Depression is also associated with behavioral factors that are, in turn, associated with CHD risk, such as treatment adherence,<sup>53</sup> smoking,<sup>54</sup> heavy alcohol use, and physical inactivity.<sup>55</sup> In considering strategies to maximize benefits in depressed cardiac patients, treatments that not only reduce depressive symptoms but also improve possible mediators responsible for the increased risk may hold particular promise (Figure 2).

## CONVENTIONAL APPROACHES TO TREATMENT OF DEPRESSION

Treatment of depression has focused on reduction of symptoms and restoration of function. Antidepressant medications are generally considered the treatment of



**FIGURE 2.** Proposed effects of different treatments for depression (psychotherapy, antidepressants, exercise) on hypothesized mechanisms by which depression is associated with adverse clinical events in coronary heart disease (CHD) patients. The potential mediators in the central column may increase risk for cardiac patients, and may be responsive to at least one intervention (identified by color-coded asterisks) that is used to treat depression. These interventions hold considerable promise for the management of cardiac disease. ANS = autonomic nervous system; HPA = hypothalamic-pituitary-adrenal

choice.<sup>56</sup> In particular, second-generation antidepressants such as selective serotonin reuptake inhibitors (SSRIs) are widely prescribed.<sup>57</sup> Current treatment guidelines suggest 6 to 12 weeks of acute treatment followed by a continuation phase of 3 to 9 months to maintain therapeutic benefit.<sup>58</sup> However, meta-analyses of antidepressant medications have reported only modest benefits over placebo treatments.<sup>59,60</sup> In particular, active drug-placebo differences in antidepressant efficacy are positively correlated with depression severity: antidepressants are often comparable with placebo in patients with low levels of depression but may be superior to placebo among patients with more severe depression. However, the explanation for this relationship may be that placebo is less effective for more depressed patients rather than antidepressants being more effective for more depressed patients.<sup>59</sup>

For acute treatment of MDD, approximately 60% of patients respond to second-generation antidepressants,<sup>61</sup> with a 40% relapse rate after 1 year.<sup>62</sup> A recent meta-analysis<sup>60</sup> of second-generation antidepressants summarized four comparative trials and 23 placebo-controlled trials and found that second-generation antidepressants were generally comparable with each

other. Interestingly, despite the modest benefit of antidepressants, the percentage of patients treated for depression in the United States increased from 0.73% in 1987 to 2.33% in 1997. The proportion of those treated who received antidepressants increased from 37.3% in 1987 to 74.5% in 1997.<sup>63</sup> The percentage of treated outpatients who used antidepressants has not increased significantly since 1997, but the use of psychotherapy as a sole treatment declined from 53.6% in 1998 to 43.1% in 2007.<sup>64</sup> Moreover, the national expenditure for the outpatient treatment of depression increased from \$10.05 billion in 1998 to \$12.45 billion in 2007, primarily driven by an increase in expenditures for antidepressant medications.

### Uncertainty about value of antidepressant therapy

Despite compelling reasons for treating depression in cardiac patients, the clinical significance of treating depression remains uncertain. To date, only the Enhancing Recovery in CHD Patients (ENRICH) trial has examined the impact of treating depression in post-MI patients on “hard” clinical end points.<sup>65</sup> Although more than 2,400 patients were enrolled in the trial, the results were disappointing. There were only modest differences (ie, two points on the Hamilton Depression Rating Scale [HAM-D]) in reductions of depressive symptoms in the group receiving cognitive behavior therapy (CBT) relative to usual-care controls and there were no treatment group differences in the primary outcome—all-cause mortality and nonfatal cardiac events. By the end of the follow-up period, 28.0% of patients in the CBT group and 20.6% of patients in usual care had received antidepressant medication. Although a subsequent reanalysis of the ENRICH study revealed that antidepressant use was associated with improved clinical outcomes,<sup>66</sup> because patients were not randomized to pharmacologic treatment it could not be concluded that SSRI use was responsible for the improved outcomes.

In a randomized trial of patients with acute coronary syndrome (the Sertraline Antidepressant Heart Attack Randomized Trial, or SADHART),<sup>67</sup> almost 400 patients were treated with the SSRI sertraline or with placebo. Reductions in depressive symptoms were similar for patients receiving sertraline compared with placebo in the full sample, although a subgroup analysis revealed that patients with more severe depression (ie, those patients who reported two or more previous episodes) benefited more from sertraline compared with placebo. Interestingly, patients receiving sertraline tended to have more favorable

cardiac outcomes, including a composite measure of both “hard” and “soft” clinical events, compared with placebo controls. These results suggested that antidepressant medication may improve underlying physiologic processes, such as platelet function, independent of changes in depression.<sup>68</sup> However, because SADHART was not powered to detect differences in clinical events, there remain unanswered questions about the clinical value of treating depression in cardiac patients with antidepressant medication.

In a second sertraline trial, SADHART-HF,<sup>69</sup> 469 men and women with MDD and chronic systolic HF were randomized to receive either sertraline or placebo for 12 weeks. Participants were followed for a minimum of 6 months. Results showed that while sertraline was safe, its use did not result in greater reductions in depressive symptoms compared with placebo ( $-7.1 \pm 0.5$  vs  $-6.8 \pm 0.5$ ) and there were no differences in clinical event rates between patients receiving sertraline compared with those receiving placebo.

In an observational study of patients with HF,<sup>44</sup> use of antidepressant medication was associated with *increased* risk of mortality or hospitalization. Although the potential harmful effects of antidepressant medication could not be ruled out, a more likely interpretation is that antidepressant medication use was a marker for individuals with more severe depression, and that the underlying depression may have contributed to their higher risk. Further, patients who are depressed, despite receiving treatment, may represent a subset of treatment-resistant patients who may be especially vulnerable to further cardiac events. Indeed, worsening depression is associated with worse outcomes in HF patients<sup>46</sup>; this is consistent with data from the ENRICH trial, which showed that patients receiving CBT (and, in some cases, antidepressant medication) who failed to improve with treatment had higher mortality rates compared with patients who exhibited a positive response to treatment.<sup>70</sup>

A fourth randomized trial of CHD patients, the Cardiac Randomized Evaluation of Antidepressant and Psychotherapy Efficacy (CREATE) trial,<sup>71</sup> used a modified “2 by 2” design; 284 CHD patients with MDD and HAM-D rating scores of 20 or greater were randomized to receive 12 weeks of (a) interpersonal therapy (IPT) plus clinical management (CM) or (b) CM only and citalopram or matching placebo. Because the same interventionists delivered the CM and IPT, patients assigned to IPT received IPT plus CM within the same (extended) session. Patients receiving citalopram had greater reductions in depressive symptoms compared with placebo, with a small to medium effect



size of 0.33, and better remission rates (35.9%) compared with placebo (22.5%). Unexpectedly, patients who received just CM tended to have greater improvements in depressive symptoms compared with patients who received IPT plus CM ( $P < .07$ ); no clinical CHD end points were assessed, however.

### Alternative approaches needed

Taken together, these data illustrate that antidepressant medications may reduce depressive symptoms for some patients; for other patients, however, medication fails to adequately relieve depressive symptoms and may perform no better than placebo. Adverse effects also may affect a subgroup of patients and may be relatively more common or more problematic in older persons with CHD.<sup>72</sup> Thus, a need remains to identify alternative approaches for treating depression in cardiac patients. We believe that aerobic exercise, the cornerstone of traditional CR, may be one such approach. Exercise is safe for most cardiac patients,<sup>73,74</sup> including patients with HF,<sup>75</sup> and, if proven effective as a treatment for depression, exercise would hold several potential advantages over traditional medical therapies: it is relatively inexpensive, improves cardiovascular functioning, and avoids the side effects sometimes associated with medication use.

## ■ EXERCISE THERAPY FOR DEPRESSION

Some studies of exercise treatment for CHD patients have tracked depressive symptoms and thus have provided information regarding the potential efficacy of exercise as a treatment for depression in this population.<sup>76–81</sup> Although most previous studies have reported significant improvements in depression after completion of an exercise program, many studies had important methodologic limitations, including the absence of a control group.

In one of the few controlled studies in this field, Stern et al<sup>82</sup> randomized 106 male patients who had a recent history of AMI along with elevated depression and anxiety or low fitness to 12 weeks of exercise training, group therapy, or a usual-care control group. At 1-year followup, both the exercise and counseling groups showed improvements in depression relative to controls.

Cross-sectional studies of non-CHD samples have reported that active individuals obtain significantly lower depression scores on self-report measures than sedentary persons.<sup>83</sup> Studies also have shown that aerobic exercise may reduce self-reported depressive symptoms in nonclinical populations and in patients diagnosed with MDD.<sup>83</sup> In 2001, a meta-analysis

evaluating 11 randomized controlled trials of non-CHD patients with MDD<sup>84</sup> noted that studies were limited because of self-selection bias, absence of control groups or nonrandom controls, and inadequate assessment of exercise training effects; the authors concluded that “the effectiveness of exercise in reducing symptoms of depression cannot be determined because of a lack of good quality research on clinical populations with adequate followup.”

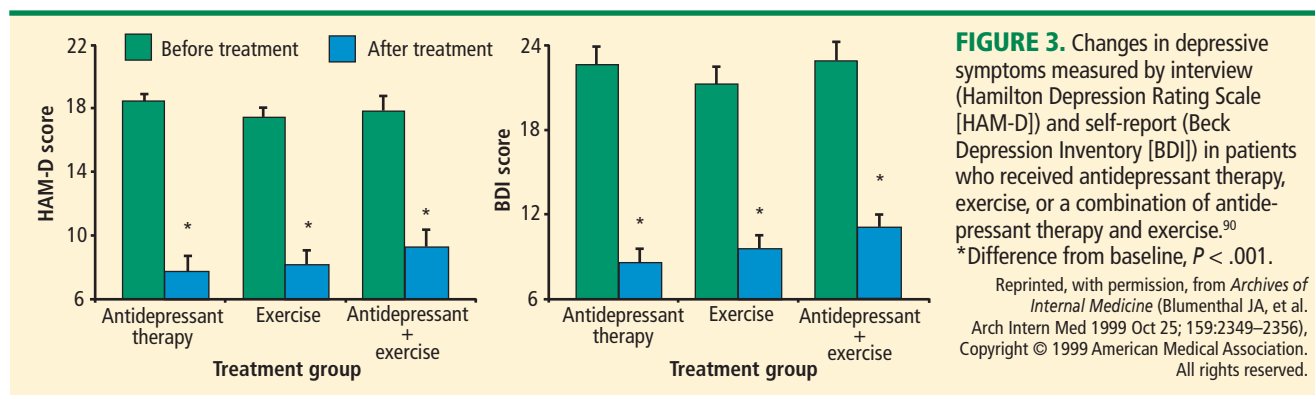
### Randomized controlled trials needed

A subsequent meta-analysis<sup>85</sup> included 25 studies; for 23 trials (907 participants) that compared exercise with no treatment or a control intervention, the pooled standardized mean difference (SMD) was  $-0.82$  (95% CI,  $-1.12$ ,  $-0.51$ ), indicating a large effect size. However, when only the three trials (216 participants) with adequate allocation concealment, intention to treat analysis, and blinded outcome assessment were included, the pooled SMD was  $-0.43$  (95% CI,  $-0.88$ ,  $0.03$ ), with a point estimate that was half the size of that with all trials. As a result, the authors concluded that “exercise seems to improve depressive symptoms in people with a diagnosis of depression, but when only the methodologically robust trials are included, the effect size is only moderate.”

To date, no randomized clinical trials (RCTs) have examined the effects of exercise on clinical outcomes in depressed cardiac patients. However, data from the ENRICH trial suggest that exercise may reduce the rates of mortality and nonfatal reinfarction in patients with depression or in post-MI patients who are socially isolated.<sup>86</sup> Self-report data were used to categorize participants as exercising regularly or not exercising regularly. After controlling for medical and demographic variables, the magnitude of reduction in risk associated with regular exercise was nearly 40% for nonfatal reinfarction and 50% for mortality. The evidence that exercise mitigates depression, reduces CHD risk factors, and improves CHD outcomes suggests that exercise may be a particularly promising intervention for depressed CHD patients.

## ■ COMPARATIVE EFFECTIVENESS OF EXERCISE AND ANTIDEPRESSANT MEDICATION

In 2008, an Institute of Medicine (IOM) report called for a national initiative of research that would provide a basis for better decision-making about how to best treat various medical conditions, including depression. In 2009, the American Reinvestment Recovery Act provided a major boost in funding for comparative effectiveness research (CER). The act allotted



\$1.1 billion to support this form of research. CER refers to the generation and synthesis of evidence that compares the benefits and harms of alternative methods to prevent, diagnose, treat, and monitor a clinical condition, or to improve the delivery of care. The purpose of CER is to assist consumers, clinicians, purchasers, and policy makers in reaching informed decisions that will improve health care at both the individual and population levels.<sup>87</sup>

### Two research categories inform decision-making

Two broad categories of research have been used to inform decision-making:

- Epidemiologic studies provide evidence linking various treatments with patient outcomes. These sources of data are limited because they seldom specify the basis for medical decisions and they fail to consider patient characteristics that affect both clinical decisions and clinical outcomes. Indeed, it has been suggested that “overcoming the limitations of observational research is the most important frontier of research on study methods.”<sup>88</sup>
- RCTs address these limitations by randomly assigning patients to different treatment conditions. While this design may eliminate some of the uncertainty and potential confounders that characterize purely observational studies, most RCTs are efficacy studies; patients are carefully selected and a treatment is usually compared with a placebo or usual care.

The RCT design addresses the question of whether a given treatment is effective, but it does not necessarily address questions that many physicians want answers to: namely, is this treatment better than that treatment? Further, physicians want to know if one treatment is more effective than another for a given patient. For example, Hlatky et al<sup>89</sup> showed that mortality associated with percutaneous coronary

interventions (PCIs) and CABG surgery was comparable; however, mortality with CABG surgery was significantly lower for patients older than 65 years while PCI was superior for patients younger than 55 years. Thus, examination of individual differences may also help to inform clinicians about the optimal therapy for their particular patients.

### Treatment of depression not necessarily a research priority

The IOM committee sought advice from a broad range of stakeholders and prioritized areas for research. The top-ranked topic was comparison of treatment strategies for atrial fibrillation, including surgery, catheter ablation, and pharmacologic treatment. Coming in at #98 was comparison of the effectiveness of different treatment strategies (eg, psychotherapy, antidepressants, combination treatment with case management) for depression after MI and their impact on medication adherence, cardiovascular events, hospitalization, and death.

To date, only two RCTs have compared exercise training with antidepressant medication. In an initial study, Blumenthal et al<sup>90</sup> randomly assigned 156 middle-aged and older adults with DSM-IV MDD to one of three treatment groups: (1) aerobic exercise training, (2) standard pharmacotherapy (sertraline), and (3) a combination of exercise and pharmacotherapy. After 16 weeks of treatment, groups did not differ significantly on percentage remissions, self-reported depression severity (BDI), or clinician-rated depression severity (HAM-D). All treatment conditions demonstrated statistically and clinically significant reductions in depression (Figure 3). At 6 months followup, participants who achieved remission with exercise alone exhibited significantly lower relapse rates compared with patients in the medication or combination groups who achieved remission.<sup>91</sup> Further, exercise during the followup period

(regardless of initial treatment group) was associated with reduced risk of depression diagnosis at 6 months posttreatment; ie, 50 minutes of exercise per week was associated with a 50% reduction in risk. While the study provided encouraging results, it was limited by the absence of a no-treatment control group and by the exercise being conducted in a group setting, so that social support may have confounded the effects of exercise.

In a second Duke study that compared exercise and antidepressant medication,<sup>92</sup> 202 adults (153 women; 49 men) diagnosed with MDD were randomly assigned to one of four groups: supervised exercise in a group setting, home-based exercise, antidepressant medication (sertraline, 50 to 200 mg daily), or placebo pill for 16 weeks. Once again, patients underwent the Structured Clinical Interview for Depression and completed the HAM-D. After 4 months of treatment, 41% of participants achieved remission, defined as no longer meeting criteria for MDD and a HAM-D score of less than 8 points. Patients receiving active treatments tended to have higher remission rates than placebo controls: supervised exercise, 45%; home-based exercise, 40%; medication, 47%; placebo, 31% ( $P = .057$ ). All treatment groups had lower HAM-D scores after treatment; scores for the active treatment groups were not significantly different from the placebo group ( $P = .23$ ). However, when immediate responders (ie, those patients who reported more than 50% reduction in depressive symptoms after only 1 week of treatment) were excluded from the analysis, patients receiving active treatments (ie, either sertraline or exercise) had greater reductions in depressive symptoms compared with placebo controls ( $P = .048$ ). There was no difference between the exercise and antidepressant groups. We concluded that the efficacy of exercise appears generally comparable with antidepressant medication and both tend to be better than placebo in patients with MDD. Placebo response rates were high, suggesting that a considerable portion of the therapeutic response could be determined by patient expectations, ongoing symptom monitoring, attention, and other nonspecific factors. Similar to our previous trial, participants who continued to exercise following the completion of the program were less likely to be depressed.<sup>93</sup>

Another RCT<sup>94</sup> also demonstrated that exercise was associated with reduced depression, independent of group support. Participants exercised alone in a secluded setting, and the study included a no-treatment control group. Only 53 of 80 patients actually completed the 12-week trial, however, including only five

of 13 no-treatment controls. Moreover, there was no active treatment comparison group, so that an estimate of comparative effectiveness could not be determined.

While these results are preliminary and should be interpreted with caution, it appears that exercise may be comparable with conventional antidepressant medication in reducing depressive symptoms, at least for patients who are willing to try it, and maintenance of exercise reduces the risk of relapse.

## SUMMARY

Three decades ago, we recognized that CR was a new frontier for behavioral medicine. We now know that successful rehabilitation of patients with CHD involves modification of lifestyle behaviors, including smoking cessation, dietary modification, and exercise. Exercise is no longer considered unsafe for most cardiac patients, and exercise is currently the key component of CR services. Research also has provided strong evidence that depression is an important risk factor for CHD, although there is no consensus regarding the optimal way to treat depression in CHD patients.<sup>95</sup> Research on comparative effectiveness of established and alternative treatments for depressed cardiac patients is a new frontier for future pioneers in heart-brain medicine.

## REFERENCES

1. Blumenthal JA, Califf R, Williams RS, Hindman M. Cardiac rehabilitation: a new frontier for behavioral medicine. *J Cardiac Rehabil* 1983; 3:637–656.
2. Lewis T. *Diseases of the Heart*. New York: Macmillan; 1933:41–49.
3. Levine SA, Lown B. The “chair” treatment of acute thrombosis. *Trans Assoc Am Physicians* 1951; 64:316–327.
4. Cain HD, Frasher WG, Stivelman R. Graded activity program for safe return to self-care after myocardial infarction. *JAMA* 1961; 177:111–115.
5. Hellerstein HK, Ford AB. Rehabilitation of the cardiac patient. *JAMA* 1957; 14:225–231.
6. Naughton J, Bruhn JG, Lategola MT. Effects of physical training on physiologic and behavioral characteristics of cardiac patients. *Arch Phys Med Rehabil* 1968; 49:131–137.
7. O'Connor GT, Buring JE, Yusuf S, et al. An overview of randomized trials of rehabilitation with exercise after myocardial infarction. *Circulation* 1989; 80:234–244.
8. Wenger NK, Froelicher ES, Smith LK, et al. Cardiac rehabilitation: clinical practice guideline no. 17. Rockville, MD: US Dept of Health and Human Services, Public Health Service, Agency for Health Care Policy and Research, National Heart, Lung, and Blood Institute; October 1995; AHCPR publication 96-0672.
9. Blumenthal JA, Emery CF, Cox DR, et al. Exercise training in healthy type A middle-aged men: effects on behavioral and cardiovascular responses. *Psychosom Med* 1988; 50:418–433.
10. Schuler G, Schlierf G, Wirth A, et al. Low-fat diet and regular, supervised physical exercise in patients with symptomatic coronary artery disease: reduction of stress-induced myocardial ischemia. *Circulation* 1988; 77:172–181.
11. Jiang W, Trauner MA, Coleman RE, et al. Association of physical fitness and transient myocardial ischemia in patients with coronary artery disease. *J Cardiopulm Rehabil* 1995; 15:431–438.



12. Blumenthal JA, Jiang W, Babyak MA, et al. Stress management and exercise training in cardiac patients with myocardial ischemia: effects on prognosis and evaluation of mechanisms. *Arch Int Med* 1997; 157:2213–2223.
13. Oldridge NB, Guyatt GH, Fisher ME, Rimm AA. Cardiac rehabilitation after myocardial infarction: combined experience of randomized clinical trials. *JAMA* 1988; 260:945–950.
14. Jolliffe JA, Rees K, Taylor RS, Thompson D, Oldridge N, Ebrahim S. Exercise-based rehabilitation for coronary heart disease. *Cochrane Database Syst Rev* 2001;CD001800.
15. Folkens CH, Sime WE. Physical fitness training and mental health. *Am Psychol* 1981; 36:373–389.
16. Hughes JR. Psychological effects of habitual aerobic exercise: a critical review. *Prev Med* 1984; 13:66–78.
17. Plante TG, Rodin J. Physical fitness and enhanced psychological health. *Curr Psychol: Res Rev* 1990; 9:3–24.
18. Review Panel on Coronary-Prone Behavior and Coronary Heart Disease. Coronary-prone behavior and coronary heart disease: a critical review. *Circulation* 1981; 63:1199–1215.
19. Smith TW. Hostility and health: current status of a psychosomatic hypothesis. *Health Psychol* 1992; 11:139–150.
20. Lett HS, Blumenthal JA, Babyak MA, Strauman TJ, Robins C, Sherwood A. Social support and coronary heart disease: epidemiologic evidence and implications for treatment. *Psychosom Med* 2005; 67:869–878.
21. Lett HS, Blumenthal JA, Babyak MA, et al. Depression as a risk factor for coronary artery disease: evidence, mechanisms, and treatment. *Psychosom Med* 2004; 66:305–315.
22. Barth J, Schumacher M, Herrmann-Lingen C. Depression as a risk factor for mortality in patients with coronary heart disease: a meta-analysis. *Psychosom Med* 2004; 66:802–813.
23. Kessler RC, Berglund P, Demler O, et al. The epidemiology of major depressive disorder: results from the National Comorbidity Survey Replication (NCR-R). *JAMA* 2003; 289:3095–3105.
24. Belsher G, Costello CG. Relapse after recovery from unipolar depression: a critical review. *Psychol Bull* 1988; 104:84–96.
25. Strothers HS III, Rust G, Minor P, Fresh E, Druss B, Satcher D. Disparities in antidepressant treatment in Medicaid elderly diagnosed with depression. *J Am Geriatr Soc* 2005; 53:456–461.
26. Simpson SM, Krishnan LL, Kunik ME, Ruiz P. Racial disparities in diagnosis and treatment of depression: a literature review. *Psychiatr Q* 2007; 78:3–14.
27. Sclar DA, Robison LM, Skaer TL. Ethnicity/race and the diagnosis of depression and use of antidepressants by adults in the United States. *Int Clin Psychopharmacol* 2008; 23:106–109.
28. Waldman SV, Blumenthal JA, Babyak MA, et al. Ethnic differences in the treatment of depression in patients with ischemic heart disease. *Am Heart J* 2009; 57:77–83.
29. Carney RM, Rich MW, Freedland KE, et al. Major depressive disorder predicts cardiac events in patients with coronary artery disease. *Psychosom Med* 1988; 50:627–633.
30. Schleifer SJ, Macari-Hinson MM, Coyle DA, et al. The nature and course of depression following myocardial infarction. *Arch Intern Med* 1989; 149:1785–1789.
31. Frasure-Smith N, Lespérance F, Talajic M. Depression following myocardial infarction: impact on 6-month survival. *JAMA* 1993; 270:1819–1825.
32. Gonzalez MB, Snyderman TB, Colket JT, et al. Depression in patients with coronary artery disease. *Depression* 1996; 4:57–62.
33. Connerney I, Shapiro PA, McLaughlin JS, Bagiella E, Sloan RP. Relation between depression after coronary artery bypass surgery and 12-month outcome: a prospective study. *Lancet* 2001; 358:1766–1771.
34. Barker EJ, Blumenthal JA, Feldman M, et al. Depression in male and female patients undergoing cardiac surgery. *Br J Clin Psychol* 1995; 34(Pt 1):119–128.
35. Lespérance F, Frasure-Smith N, Juneau M, Thérioux P. Depression and 1-year prognosis in unstable angina. *Arch Intern Med* 2000; 160:1354–1360.
36. Frasure-Smith N, Lespérance F, Talajic M. Depression and 18-month prognosis after myocardial infarction. *Circulation* 1995; 91:999–1005.
37. Barefoot JC, Helms MJ, Mark DB, et al. Depression and long-term mortality risk in patients with coronary artery disease. *Am J Cardiol* 1996; 78:613–617.
38. Burg MM, Benedetto C, Soufer R. Depressive symptoms and mortality two years after coronary artery bypass graft surgery (CABG) in men. *Psychosom Med* 2003; 65:508–510.
39. Blumenthal JA, Lett HS, Babyak MA, et al. Depression as a risk factor for mortality after coronary artery bypass surgery. *Lancet* 2003; 362:604–609.
40. Connerney I, Sloan RP, Shapiro PA, Bagiella E, Seckman C. Depression is associated with increased mortality 10 years after coronary artery bypass surgery. *Psychosom Med* 2010; 72:874–881.
41. Rutledge T, Reis VA, Linke SE, Greenberg BH, Mills PJ. Depression in heart failure: a meta analytic review of prevalence, intervention effects, and associations with clinical outcomes. *J Am Coll Cardiol* 2006; 48:1527–1537.
42. Murberg TA, Furze G. Depressive symptoms and mortality in patients with congestive heart failure: a six-year follow-up study. *Med Sci Monit* 2004; 10:CR643–CR648.
43. Jiang W, Alexander J, Christopher E, et al. Relationship of depression to increased risk of mortality and rehospitalization in patients with congestive heart failure. *Arch Intern Med* 2001; 161:1849–1856.
44. Sherwood A, Blumenthal JA, Trivedi R, et al. Relationship of depression to death or hospitalization in patients with heart failure. *Arch Int Med* 2007; 167:367–373.
45. Frasure-Smith N, Lespérance F, Habra M, et al. Elevated depression symptoms predict long-term cardiovascular mortality in patients with atrial fibrillation and heart failure. *Circulation* 2009; 120:134–140.
46. Sherwood A, Blumenthal JA, Hinderliter AL, et al. Worsening depressive symptoms are associated with adverse clinical outcomes in patients with heart failure. *J Am Coll Cardiol* 2011; 57:418–423.
47. Anderson RJ, Freedland KE, Clouse RE, Lustman PJ. The prevalence of comorbid depression in adults with diabetes: a meta-analysis. *Diabetes Care* 2001; 24:1069–1078.
48. Thakore JH, Richards PJ, Rezek RH, Martin A, Dinan TG. Increased intra-abdominal fat deposition in patients with major depressive illness as measured by computed tomography. *Biol Psychiatry* 1997; 41:1140–1142.
49. Musselman DL, Tomer A, Manatunga AK, et al. Exaggerated platelet reactivity in major depression. *Am J Psychiatry* 1996; 153:1313–1317.
50. Delgado PL, Moreno FA. Role of norepinephrine in depression. *J Clin Psychiatry* 2000; 61 (suppl 1):5–12.
51. Akil H, Haskett RF, Young EA, et al. Multiple HPA profiles in endogenous depression: effect of age and sex on cortisol and beta-endorphin. *Biol Psychiatry* 1993; 33:73–85.
52. Kop WJ, Gottdiener JS, Tangen CM, et al. Inflammation and coagulation factors in persons > 65 years of age with symptoms of depression but without evidence of myocardial ischemia. *Am J Cardiol* 2002; 89:419–424.
53. Carney RM, Freedland KE, Eisen SA, Rich MW, Jaffe AS. Major depression and medication adherence in elderly patients with coronary artery disease. *Health Psychol* 1995; 14:88–90.
54. Lehto S, Koukkunen H, Hintikka J, Viinamäki H, Laakso M, Pyörälä K. Depression after coronary heart disease events. *Scand Cardiovasc J* 2000; 34:580–583.
55. Camacho TC, Roberts RE, Lazarus NB, Kaplan GA, Cohen RD. Physical activity and depression: evidence from the Alameda County Study. *Am J Epidemiol* 1991; 134:220–231.
56. Clinical Practice Guideline Number 5: Depression in Primary Care, 2: Treatment of Major Depression. Rockville, MD: U.S. Department of Health and Human Services, Agency for Health Care Policy and Research; 1993. AHCPR publication 93-0551.
57. Anderson IM, Ferrier IN, Baldwin RC, et al. Evidence-based guidelines for treating depressive disorders with antidepressants: a revision of the 2000 British Association for Psychopharmacology guidelines. *J Psychopharmacol* 2008; 22:343–396.
58. American Psychiatric Association. Practice guideline for the treat-



- ment of patients with major depressive disorder (revision). *Am J Psychiatry* 2000; 157 (suppl 4):1–45.
59. Kirsch I, Deacon BJ, Huedo-Medina TB, Scoboria A, Moore TJ, Johnson BT. Initial severity and antidepressant benefits: a meta-analysis of data submitted to the Food and Drug Administration. *PLoS Med* 2008; 5:e45.
  60. Hansen R, Gaynes B, Thieda P, et al. Meta-analysis of major depressive disorder relapse and recurrence with second-generation antidepressants. *Psychiatr Serv* 2008; 59:1121–1129.
  61. Hansen RA, Gartlehner G, Lohr KN, Gaynes BN, Carey TS. Efficacy and safety of second-generation antidepressants in the treatment of major depressive disorder. *Ann Intern Med* 2005; 143:415–426.
  62. Rush AJ, Trivedi MH, Wisniewski SR, et al. Acute and longer-term outcomes in depressed outpatients requiring one or several treatment steps: a STAR\*D report. *Am J Psychiatry* 2006; 163:1905–1917.
  63. Olfson M, Marcus SC, Druss B, Elinson L, Tanielian T, Pincus HA. National trends in the outpatient treatment of depression. *JAMA* 2002; 287:203–209.
  64. Marcus SC, Olfson M. National trends in the treatment of depression from 1998 to 2007. *Arch Gen Psychiatry* 2010; 67:1265–1273.
  65. Berkman LF, Blumenthal J, Burg M, et al. Effects of treating depression and low perceived social support on clinical events after myocardial infarction: the Enhancing Recovery in Coronary Heart Disease Patients (ENRICH) Randomized Trial. *JAMA* 2003; 289:3106–3116.
  66. Taylor CB, Youngblood ME, Catellier D, et al. Effects of antidepressant medication on morbidity and mortality in depressed patients after myocardial infarction. *Arch Gen Psychiatry* 2005; 62:792–798.
  67. Glassman AH, O'Connor CM, Califf RM, et al. Sertraline treatment of major depression in patients with acute MI or unstable angina. *JAMA* 2002; 288:701–709.
  68. Serebruany VL, Glassman AH, Malinin AI, et al. Platelet/endothelial biomarkers in depressed patients treated with the selective serotonin reuptake inhibitor sertraline after acute coronary events: the Sertraline AntiDepressant Heart Attack Randomized Trial (SADHART) Platelet Substudy. *Circulation* 2003; 108:939–44.
  69. O'Connor CM, Jiang W, Kuchibhatla M, et al. Safety and efficacy of sertraline for depression in patients with heart failure: results of the SADHART-CHF (Sertraline Against Depression and Heart Disease in Chronic Heart Failure) trial. *J Am Coll Cardiol* 2010; 56:692–699.
  70. Carney RM, Blumenthal JA, Freedland KE, et al. Depression and late mortality after myocardial infarction in the Enhancing Recovery in Coronary Heart Disease (ENRICH) study. *Psychosom Med* 2004; 66:466–474.
  71. Lespérance F, Frasure-Smith N, Koszycki D, et al. Effects of citalopram and interpersonal psychotherapy on depression in patients with coronary artery disease: the Canadian Cardiac Randomized Evaluation of Antidepressant and Psychotherapy Efficacy (CREATE) Trial. *JAMA* 2007; 297:367–379.
  72. Salzman C, Schneider L, Alexopoulos GS. Pharmacological treatment of depression in late life. In: Bloon F, Kupfer D, eds. *Psychopharmacology: Fourth Generation of Progress*. New York: Raven Press; 1995.
  73. Franklin BA, Bonzheim K, Gordon S, Timmis GC. Safety of medically supervised outpatient cardiac rehabilitation exercise therapy: a 16-year follow-up. *Chest* 1998; 114:902–906.
  74. Vongvanich P, Paul-Labrador MJ, Merz CN. Safety of medically supervised exercise in a cardiac rehabilitation center. *Am J Cardiol* 1996; 77:1383–1385.
  75. O'Connor CM, Whellan DJ, Lee KL, et al. Efficacy and safety of exercise training in patients with chronic heart failure: H-F ACTION randomized controlled trial. *JAMA* 2009; 301:1439–1540.
  76. Milani RV, Lavie CJ, Cassidy MM. Effects of cardiac rehabilitation and exercise training programs on depression in patients after major coronary events. *Am Heart J* 1996; 132:726–732.
  77. Beniamini Y, Rubenstein JJ, Zaichkowsky LD, Crim MC. Effects of high-intensity strength training on quality-of-life parameters in cardiac rehabilitation patients. *Am J Cardiol* 1997; 80:841–846.
  78. Maines TY, Lavie CJ, Milani RV, Cassidy MM, Gilliland YE, Murgo JP. Effects of cardiac rehabilitation and exercise programs on exercise capacity, coronary risk factors, behavior, and quality of life in patients with coronary artery disease. *South Med J* 1997; 90:43–49.
  79. Milani RV, Lavie CJ. Prevalence and effects of cardiac rehabilitation on depression in the elderly with coronary heart disease. *Am J Cardiol* 1998; 81:1233–1236.
  80. Blumenthal JA, Emery CE, Rejeski WJ. The effects of exercise training on psychosocial functioning after myocardial infarction. *J Cardiopulmonary Rehabil* 1988; 8:183–193.
  81. Taylor CB, Houston-Miller N, Ahn DK, Haskell W, DeBusk RF. The effects of exercise training programs on psychosocial improvement in uncomplicated postmyocardial infarction patients. *J Psychosom Res* 1986; 30:581–587.
  82. Stern MJ, Gorman PA, Kaslow L. The group counseling v exercise therapy study: a controlled intervention with subjects following myocardial infarction. *Arch Intern Med* 1983; 143:1719–1725.
  83. Brosse AL, Sheets ES, Lett HS, Blumenthal JA. Exercise and the treatment of clinical depression in adults: recent findings and future directions. *Sports Med* 2002; 32:741–760.
  84. Lawlor DA, Hopker SW. The effectiveness of exercise as an intervention in the management of depression: systematic review and meta-regression analysis of randomised controlled trials. *BMJ* 2001; 322:763–767.
  85. Mead GE, Morley W, Campbell P, Greig CA, McMurdo M, Lawlor DA. Exercise for depression. *Cochrane Database Syst Rev* 2009; CD004366.
  86. Blumenthal JA, Babyak MA, Carney RM, et al. Exercise, depression, and mortality after myocardial infarction in the ENRICH trial. *Med Sci Sports Exerc* 2004; 36:746–755.
  87. Eden J, Wheatley B, McNeil B, Sox H, eds. *Institute of Medicine. Knowing What Works in Health Care. A Roadmap for the Nation*. Washington DC: National Academics Press; 2009.
  88. Sox HC, Greenfield S. Comparative effectiveness research: a report from the Institute of Medicine. *Ann Intern Med* 2009; 151:203–205.
  89. Hlatky MA, Boothroyd DB, Bravata DM, et al. Coronary artery bypass surgery compared with percutaneous coronary interventions for multivessel disease: a collaborative analysis of individual patient data from ten randomised trials. *Lancet* 2009; 373:1190–1197.
  90. Blumenthal JA, Babyak MA, Moore KA, et al. Effects of exercise training on older patients with major depression. *Arch Intern Med* 1999; 159:2349–2356.
  91. Babyak M, Blumenthal JA, Herman S. Exercise treatment for major depression: maintenance of therapeutic benefit at 10 months. *Psychosom Med* 2000; 62:633–638.
  92. Blumenthal JA, Babyak MA, Doraiswamy PM, et al. Exercise and pharmacotherapy in the treatment of major depressive disorder. *Psychosom Med* 2007; 69:587–596.
  93. Hoffman B, Babyak M, Craighead WE, et al. Exercise and pharmacotherapy in patients with major depression: one-year follow-up of the SMILE study. *Psychosom Med* 2010; 73:127–133.
  94. Dunn AL, Trivedi MH, Kampert JB, Clark CG, Chambliss HO. Exercise treatment for depression: efficacy and dose response. *Am J Prev Med* 2005; 28:1–8.
  95. Lichtman JH, Bigger JT Jr, Blumenthal JA, et al. Depression and coronary heart disease: recommendations for screening, referral, and treatment: a science advisory from the American Heart Association Prevention Committee of the Council on Cardiovascular Nursing, Council on Clinical Cardiology, Council on Epidemiology and Prevention, and Interdisciplinary Council on Quality of Care and Outcomes Research: endorsed by the American Psychiatric Association. *Circulation* 2008; 118:1768–1775.

**Correspondence:** James A. Blumenthal, PhD, Department of Psychiatry and Behavioral Sciences, Duke University Medical Center, Durham, NC 27710; Blume003@mc.duke.edu