

**H. ABDEL-RAZEQ, MD**

Fellow, Department of Hematology and Medical Oncology, Cleveland Clinic.

**BRIAN J. BOLWELL, MD**

Director, Bone Marrow Transplantation Program, Department of Hematology and Medical Oncology, Cleveland Clinic.

# A 68-year-old woman with high serum protein and no symptoms

**W**HILE PERFORMING a routine annual checkup for a 68-year-old woman, a family physician notes that the patient's total serum protein level is high at 11.2 mg/dL. Her other laboratory values are unremarkable: her serum creatinine level is 1.1 mg/dL, calcium 9.1 mg/dL, and albumin 3.8 g/dL. Except for nonspecific arthralgias, the patient has no symptoms: no headache, no dizziness, no back pain, no visual disturbances, and no weight loss. Her physical examination is completely normal. An automated blood cell count and differential is normal; urinalysis reveals trace proteinuria.

The elevated total serum protein level leads the physician to order a serum protein electrophoresis, which shows a "spike" in gamma globulin (FIGURE 1). This elevation is known as an "M" (monoclonal) component, because it reflects the production of clones of one cell. It is also known as "monoclonal gammopathy," even if it involves an antibody other than gamma globulin.

The patient was told that she may have multiple myeloma and was referred for further evaluation.

## ■ WHAT DIAGNOSTIC TESTS ARE REQUIRED?

**1** Which one of the following is not appropriate as a further diagnostic study?

- ☐ Bone scan
- ☐ Urine protein electrophoresis

- ☐ Serum protein immune electrophoresis
- ☐ Bone marrow biopsy

This case scenario is not uncommon. The patient may have multiple myeloma, but the data presented are not enough to make the diagnosis, which requires the criteria listed in

TABLE 1.

## The workup for monoclonal gammopathy

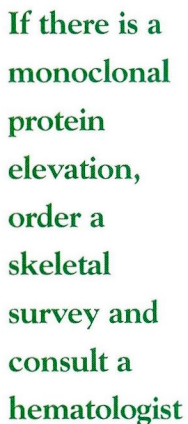
The diagnostic workup for monoclonal gammopathy and possible multiple myeloma involves the sequence of steps listed below. A primary care physician who finds any elevation in total protein without a concomitant elevation in serum albumin should order a serum protein electrophoresis and immune protein electrophoresis. If an M component is found, then a radiologic assessment of the skeleton should be performed and the patient then referred to a hematologist for a bone marrow biopsy and further hematologic evaluation.

**Electrophoresis** for multiple myeloma and its related disorders is performed in two parts: (1) serum protein electrophoresis, to determine if there is an M component; and (2) immune protein electrophoresis, to confirm and identify the subtype of immunoglobulin to which the M component belongs.

**Urine protein electrophoresis** is required to detect certain fragments of immunoglobulins called Bence Jones proteins—monoclonal light chains with unique thermal properties.

**A SELF-TEST  
of clinical  
recognition**

**If serum  
protein is  
elevated but  
albumin is  
normal,  
obtain protein  
electrophoresis**



### ■ HOW OFTEN DOES MONOCLONAL GAMMOPATHY REFLECT MULTIPLE MYELOMA?

**2** What percentage of patients with newly discovered monoclonal gammopathy have multiple myeloma?

- ☐ 100%
- ☐ 75%
- ☐ 50%
- ☐ < 25%

Not every patient with monoclonal gammopathy has multiple myeloma. One series<sup>1</sup> described more than 800 patients with monoclonal gammopathy, of whom only 14% had multiple myeloma, while 60% had monoclonal gammopathy of undetermined significance (which is discussed in detail below). The remainder had amyloidosis, macroglobulinemia, or other lymphoproliferative disorders.





## ■ MONOCLONAL GAMMOPATHY OF UNDETERMINED SIGNIFICANCE: COMMON, ASYMPTOMATIC

This patient underwent a skeletal survey, which showed no lytic lesions. A bone marrow biopsy showed 2% plasma cells (normal: < 5%). Serum immune electrophoresis showed a monoclonal immunoglobulin G (IgG) spike of 1.8 g/dL (normal: 717–1411 mg/dL and polyclonal, not monoclonal). Urine protein electrophoresis showed no monoclonal spike.

On the basis of this workup, this patient does not have multiple myeloma, but does have an M component in the absence of features of multiple myeloma, macroglobulinemia, amyloidosis, or other related diseases. This condition is called “monoclonal gammopathy of undetermined significance” (MGUS) (TABLE 2).

Monoclonal gammopathy of undetermined significance is common and increases in prevalence with age—up to 10% to 14% in patients older than 70 years. It is invariably diagnosed in asymptomatic patients on a routine serum chemistry evaluation. The elevation of monoclonal protein is modest by definition in MGUS; as a result, hyperviscosity does not occur. Usually the elevated protein is of the IgG type, although the immunologic subtype has little prognostic significance. Because patients with MGUS tend to be elderly and have associated diseases, many already have osteoporosis and renal dysfunction, sometimes making it difficult to differentiate between MGUS and multiple myeloma unless the diagnostic criteria listed above are carefully applied.

## ■ WHAT IS THE NATURAL HISTORY OF MONOCLONAL GAMMOPATHY OF UNDETERMINED SIGNIFICANCE?

**3** With further follow-up, this patient's condition will most likely:

- ☐ Remain the same
- ☐ Evolve into multiple myeloma
- ☐ Evolve into macroglobulinemia
- ☐ Evolve into lymphoma

TABLE 1

### DIAGNOSTIC CRITERIA FOR MULTIPLE MYELOMA

#### Both of the following:

- Bone marrow plasma cells > 10%
- Extramedullary plasmacytoma

#### Or one of the above, plus any two of the following:

- Serum M protein (usually defined as a level > 3 g/dL)
- Urine M protein
- Lytic bone lesions

TABLE 2

### CHARACTERISTICS OF MONOCLONAL GAMMOPATHY OF UNDETERMINED SIGNIFICANCE (MGUS)

- Serum M protein < 3 g/dL
- Bone marrow plasma cells < 5% of total marrow cells
- Little or no urine M protein
- Absence of lytic bone lesions, hypercalcemia, or renal insufficiency
- Stability over time

The natural history of monoclonal gammopathy of undetermined significance has been well studied<sup>1–5</sup>; in retrospective published reports, large numbers of patients were followed for long periods. In one series,<sup>2</sup> 241 patients (median age 64 years) were followed for a median of 22 years (range 20 to 35 years), during which 47% died of unrelated diseases, 19% had stable monoclonal gammopathy, 10% had significant increases in their M component levels (> 3 g/dL), and 24% developed frank myeloma or a related disorder (16% multiple myeloma, 3% amyloidosis, 3% macroglobulinemia, and 2% lymphoma).

Therefore, although monoclonal gammopathy of undetermined significance usually remains stable, approximately one in four patients eventually develops a serious hematologic disease, a probability that mandates detecting MGUS and designing an appropriate follow-up strategy. If a patient is destined

**MGUS is common, especially in older patients**





The *Cleveland Clinic Journal of Medicine* uses the AMA's database of physician names and addresses. (All physicians are included in the AMA database, not just members of the AMA.) Only the AMA can update this data, and will accept a change-of-address notice only from you.

Be sure your primary specialty and type of practice also are up-to-date on AMA records. This information is important in determining who receives the *Cleveland Clinic Journal of Medicine*.

If you have ever notified the AMA that you did not want to receive mail, you will not receive the *Cleveland Clinic Journal of Medicine*. You can reverse that directive by notifying the AMA. Please note that a change of address with the AMA will redirect all medically related mailings to the new location.

#### FOR FASTER SERVICE

■ **PHONE** 312-464-5192

■ **FAX** 312-464-5827

■ **E-MAIL** nicole\_neal@ama-assn.org

or send a recent mailing label along with new information to:

AMA  
DEPARTMENT OF DATA SERVICES  
515 North State Street  
Chicago, IL 60610

#### NEW INFORMATION

NAME

STREET ADDRESS

CITY

STATE

ZIP

Please allow 6 to 8 weeks for change to take effect

to develop a hematologic malignant disease, we can intervene more effectively if we detect it earlier.

#### ■ WHAT IS THE OPTIMAL FOLLOW-UP SCHEDULE?

**4** What is the best follow-up schedule for a patient with monoclonal gammopathy of undetermined significance?

- ☐ Monthly for 2 years
- ☐ Every 3 to 6 months for 10 years
- ☐ Every 3 to 6 months, indefinitely
- ☐ No further follow-up is needed

The interval between recognition of an M component and the diagnosis of multiple myeloma or a related disorder ranges from 2 to 29 years, a finding that indicates that patients with an apparent monoclonal gammopathy of undetermined significance must be followed indefinitely. Thus, we would recommend evaluating the patient every 3 months after the diagnosis of MGUS for 2 years. After this, if the patient appears to have stable disease, follow-up may be decreased to every 6 months.

At each visit, we recommend performing:

- A history and physical examination.
- A measurement of M component by serum protein electrophoresis.
- A complete blood count with differential.
- Serum protein, albumin, creatinine, and calcium measurements.

#### ■ REFERENCES

1. Kyle RA, Lust JA. Monoclonal gammopathy of undetermined significance. *Semin Hematol* 1989; 26:176-200.
2. Kyle RA. Benign monoclonal gammopathy—after 20 to 35 years of follow up. *Mayo Clin Proc* 1993; 68:26-36.
3. Sinclair D, Sheehan T, Parrott DMV, Stott DI. The incidence of monoclonal gammopathy in a population over 45 years old determined by isoelectric focusing. *Br J Haematol* 1986; 64:745-750.
4. Kyle RA, Garton JP. The spectrum of IgM monoclonal gammopathy in 430 cases. *Mayo Clin Proc* 1987; 62:719-731.
5. Blade J, Lopez-Guillermo A, Rozman C, et al. Malignant transformation and life expectancy in monoclonal gammopathy of undetermined significance. *Br J Haematol* 1992; 81:391-394.

**ADDRESS:** Brian J. Bolwell, MD, Desk T-13, The Cleveland Clinic Foundation, 9500 Euclid Avenue, Cleveland, OH 44195; e-mail bolwelb@cesmtp.ccf.org.