

Antacid-induced osteomalacia¹

Ghandi Saadeh, M.D.
Thomas Bauer, M.D.
Angelo Licata, M.D.
Leslie Sheeler, M.D.

Hypophosphatemic osteomalacia caused by antacid intake has been reported in nine cases. The authors report an additional case, which was cured by discontinuing antacids. A review of the literature is presented.

Index terms: Antacids • Osteomalacia

Cleve Clin J Med 54:214–216, May/June 1987

Despite the widespread use of antacids, antacid-induced osteomalacia has been reported in only seven women^{1–7} and two men.^{8,9} This problem arises from the hypophosphatemia resulting from poor absorption of dietary phosphorus. We report an additional case in which chronic antacid therapy produced hypophosphatemic osteomalacia that was reversed after discontinuing antacids.

Case report

A 31-year-old woman was referred to our endocrinology department in July 1982 for evaluation of left lower extremity aches and weakness and suspected metabolic bone disease. For 13 years she had taken at least six tablets of Maalox TC daily (each tablet contains 600 mg of aluminum hydroxide and 300 mg of magnesium hydroxide) for acid peptic symptoms. In November 1981, muscle cramps, weakness, and pain in her left leg and ribs developed. In May 1982, she sustained an atraumatic rib fracture. The *Table* shows the results of laboratory studies. *Figure 1* is a bone scan. Hip and chest x-rays showed osteopenia. Vitamin D levels were normal. A tetracycline-labeled iliac crest bone biopsy was performed (*Fig. 2*). The results showed normal trabecular

bone volume (24.0%) but a marked increase in the amount of unmineralized bone (osteoid). Osteoid was present over 60.7% of the trabecular surfaces (normal approximately 19%) and occupied 29% of the trabecular bone volume (normal approximately 2%). Mean osteoid seam width was 36 μ m (normal, approximately 9.7 μ m). The number of osteoclasts was not increased, and there was no peritrabecular fibrosis. These histologic features are consistent with osteomalacia. Aurine tricarboxylic acid stain for aluminum was negative. In addition, energy-dispersive x-ray analysis for aluminum as previously described¹⁰ showed no increase in aluminum. Kidney function test results were normal.

Six months after stopping antacid intake, her bone pain diminished markedly and serum chemical values returned to normal (*Table*). In July 1984, a bone scan was completely normal.

Comments

In patients ingesting excessive oral aluminum hydroxide, a bone mineralization defect may develop because of accumulation of aluminum in bone^{11,12} or because of chronic depletion of inorganic phosphorus secondary to its impaired absorption.¹³ Aluminum, however, was not detected in our patient's bone biopsy specimen.

Features of the previously reported cases include normal serum calcium, increased urinary

Table. Laboratory values during antacid intake and recovery

Test	6/4/82*	11/2/82	7/84
Ca (mg/dL)	9.2	9.2	10.2
P (mg/dL)	2.4	4.2	4.4
Parathyroid hormone (pg Eq/mL)	215†	–	–
Alkaline phosphatase (pg Eq/mL)	231	57	42
Urine Ca (mg/24h)	542	43	–
Urine P (mg/24h)	1.2	221	–

* Date of initial admission to the hospital.

† Normal range = 163–347 (pg Eq/mL).

¹ Departments of Endocrinology (G.S., A.L., L.S.) and Pathology (T.B.), The Cleveland Clinic Foundation. Submitted for publication Sept 1986; accepted Jan 1987. pa

0891-1150/87/03/0214/03/\$1.75/0

Copyright © 1987, The Cleveland Clinic Foundation

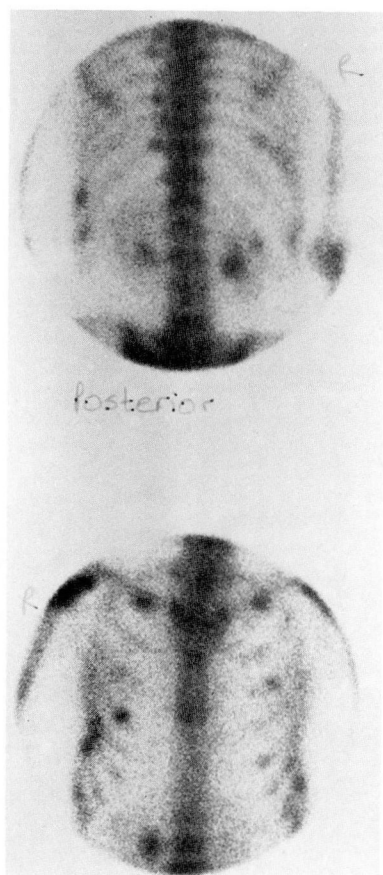


Fig. 1. Bone scan showing multiple areas of increased uptake in the ribs.

calcium, decreased serum phosphorus, and elevated alkaline phosphatase. Normal values of parathyroid hormone (PTH) were found in four of six reported cases, including our own. Similar results have been reported in normal and hypoparathyroid subjects during phosphorus depletion.¹⁴ In patients ingesting excessive amounts of aluminum hydroxide (2.5 g daily or more), osteomalacia develops in the presence of normal serum PTH and 1,25 OH vitamin D levels.^{15,16} Phosphate depletion leads to hypophosphatemia with increased intestinal absorption of calcium and increased renal excretion of calcium. Both these effects of calcium seem to be caused by changes in vitamin D metabolism.¹⁷ Phosphate depletion causes an increase in renal 25-OH vitamin D-1 α hydroxylase that is independent of parathyroid function and an increased accumulation of 1,25 (OH)₂ vitamin D in intestinal target tissues. Even with high 1,25 (OH)₂ vitamin D, osteomalacia develops if insufficient phosphate is available in serum to support mineralization of osteoid. With-

drawing the aluminum hydroxide restores the serum phosphorus levels to normal and reverses all the skeletal manifestations of osteomalacia.

An interesting aspect of this condition is its predominance in women. Eight, including our case, of 10 reported cases were in women. This may be because phosphate losses in men are derived principally from soft tissues, whereas a significant fraction of phosphate losses in women comes from the skeleton.¹⁷

Since aluminum hydroxide antacids are commonly used and abused by patients, prospective studies are needed to better estimate the incidence of this serious problem.

Acknowledgment

We would like to acknowledge James T. McMahon, Ph.D., for performing the energy-dispersive x-ray analysis on the bone biopsy specimen.

Leslie Sheeler, M.D.
Department of Endocrinology
The Cleveland Clinic Foundation
9500 Euclid Ave.
Cleveland, OH 44106

References

1. Cooke N, Teitelbaum S, Avioli LV. Antacid-induced osteomalacia and nephrolithiasis. *Arch Intern Med* 1978; **138**:1007-1009.
2. Lotz M, Ney R, Bartter FC. Osteomalacia and debility resulting from phosphorus depletion. *Trans Assoc Am Physicians* 1964; **77**:281-295.
3. Bloom WL, Flinchum D. Osteomalacia with pseudofractures caused by the ingestion of aluminum hydroxide. *JAMA* 1960; **174**:1327-1330.
4. Baker LRI, Ackrill P, Cattell WR, Stamp TCB, Watson L. Iatrogenic osteomalacia and myopathy due to phosphate depletion. *Br Med J* 1974; **3**:150-152.
5. Dent CE, Winter CS. Osteomalacia due to phosphate depletion from excessive aluminum hydroxide ingestion. *Br Med J* 1974; **1**: 551-552.
6. Ludwig GD, Kyle GC, De Blanco M. "Tertiary" hyperparathyroidism induced by osteomalacia resulting from phosphorus depletion. *Am J Med* 1967; **43**:136-140.
7. Insogna KL, Bordley DR, Caro JF, Lockwood DH. Osteomalacia and weakness from excessive antacid ingestion. *JAMA* 1980; **244**:2544-2546.
8. Carmichael KA, Fallon MD, Dalinka M, Kaplan FS, Axel L, Haddad JG. Osteomalacia and osteitis fibrosa in a man ingesting aluminum hydroxide antacid. *Am J Med* 1984; **76**:1137-1143.
9. Godsall JW, Baron R, Insogna KL. Vitamin D metabolism and bone histomorphometry in a patient with antacid-induced osteomalacia. *Am J Med* 1984; **77**:747-750.
10. Bauer TW, Popowniak KL, Stulberg BN, McMahon JT. Osteomalacia associated with aluminum intoxication in

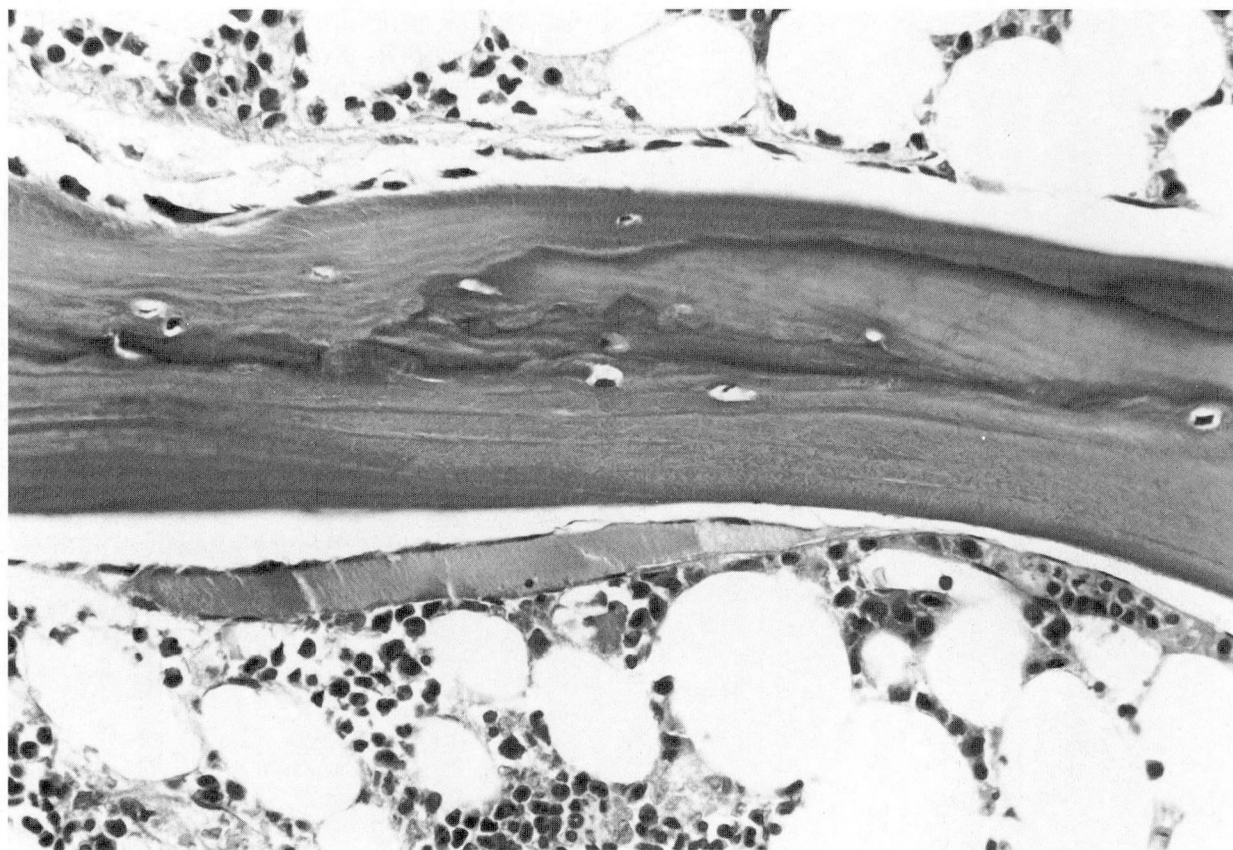


Fig. 2. Bone biopsy specimen showing osteomalacia. The histomorphometry measurements are shown in the text.

- a patient with chronic renal failure. *Cleve Clin Q* 1985; **52**:271–278.
11. Hodsman AB, Sherrard DJ, Alfrey AC, et al. Bone aluminum and histomorphometric features of renal osteodystrophy. *J Clin Endocrinol Metab* 1982; **54**:539–546.
12. Recker RR, Blotcky AJ, Leffler JA, Rack EP. Evidence for aluminum absorption from the gastrointestinal tract and bone deposition by aluminum carbonate ingestion with normal renal function. *J Lab Clin Med* 1977; **90**:810–815.
13. Harrison JE, Hitchman AJ, Hitchman A, Hasany SA, McNeill KG, Tam CS. Differences between the effects of phosphate deficiency and vitamin D deficiency on bone metabolism. *Metabolism* 1980; **29**:1225–1233.
14. Lotz M, Zisman E, Bartter FC. Evidence for a phosphorus-depletion syndrome in man. *N Engl J Med* 1968; **278**:409–415.
15. Lyles KW, Berry WR, Haussler M, Harrelson JM, Drezner MK. Hypophosphatemic osteomalacia: association with prostatic carcinoma. *Ann Intern Med* 1980; **93**:275–278.
16. Gray RW, Wilz DR, Caldas AE, Lemann J Jr. The importance of phosphate in regulating plasma 1,25-(OH)₂-vitamin D levels in humans: studies in healthy subjects, in calcium stone formers and in patients with primary hyperparathyroidism. *J Clin Endocrinol Metab* 1977; **45**:299–306.
17. Dominguez JH, Gray RW, Lemann J Jr. Dietary phosphate deprivation in women and men: effects on mineral acid balances, parathyroid hormone, and the metabolism of 25-OH-vitamin D. *J Clin Endocrinol Metab* 1976; **43**:1056–1068.