

# TABLE OF CONTENTS

## FROM THE EDITOR .....

### **The gift of lasting immunity** 263

Measles vaccine–induced immunity, although not necessarily lifelong for all individuals, is quite durable.

Brian F. Mandell, MD, PhD

## THE CLINICAL PICTURE.....

### **Tinea incognito** 271

This atypical form of dermatophyte infection is caused by local immune suppression from systemic or topical corticosteroids.

Soniya Shony, MBBS; Carol Lobo, MBBS, MD; Sowmya Kaimal, MD

## 1-MINUTE CONSULT .....

### **What diagnostic tests should be done after discovering clubbing in a patient without cardiopulmonary symptoms?** 273

Computed tomography of the patient's chest is indicated based on the robust association between clubbing and intrathoracic malignancy.

Karthik Meiyappan Udayappan, MD; Christopher V. Anstine, MD

## 1-MINUTE CONSULT .....

### **Does my adult patient need a measles vaccine?** 279

Possibly. Adults without acceptable presumptive evidence of immunity to measles should receive 1 dose of the measles-mumps-rubella vaccine, and 2 doses are recommended for adults in special situations.

Kaitlyn R. Rivard, PharmD

## 1-MINUTE CONSULT .....

### **Do I need to treat supine hypertension in my hospitalized patient?** 285

Inpatients with an elevated supine blood pressure should be evaluated for orthostatic changes before treatment is considered.

Katherine Sherman, MD; Robert Lichtenberg, MD

## Upcoming Features

- Direct oral anticoagulants: Common challenging scenarios in everyday practice
- Managing the side effects of sodium-glucose cotransporter 2 inhibitors



CLEVELAND  
CLINIC  
JOURNAL OF  
MEDICINE

**GUIDELINES TO PRACTICE** ..... **CME** **MOC**
**New atrial fibrillation guideline: Modify risk, control rhythm, prevent progression** **291**

Key updates in the new American guideline include recommendations for aggressive lifestyle and risk-factor modifications, annual assessment of thromboembolic risk, and early rhythm control.

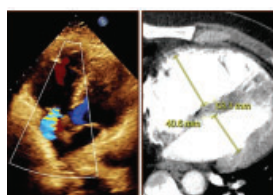
Laura A. Campbell, MD; Jessica P. Ammon, DO; Rachana Kombathula, MD; Naa'irah Muhammad, MD; Christopher D. Jackson, MD

**EDITORIAL** .....

**The beat goes on: Highlights from the new American and European A-fib guidelines** **297**

The authors discuss and compare the latest atrial fibrillation guidelines from American and European medical societies.

Sandra Howell, MBBS, MEd, MSc, MPhil; Alphonsus Liew, MBBS; Christopher Aldo Rinaldi, MD

**REVIEW** .....

**Managing right ventricular failure in the setting of pulmonary embolism** **301**

The authors review current management strategies, including medical, percutaneous interventional, and surgical options, and discuss recent advances in the field.

Sharmeen Sorathia, MD; Anibelky Almanzar, MD; Abhishek Bhandiwad, MD; Phoo Pwint Nandar, MD

**REVIEW** .....

**Alpha-gal syndrome: Recognizing and managing a tick-bite-related meat allergy** **311**

Alpha-gal syndrome is an emerging allergic condition in which immunoglobulin E-mediated symptoms are triggered a few hours after an affected person consumes mammalian meat.

Zehra Naseem, MD; Aun Muhammad, MD; Arjun Chatterjee, MD; Alberto Rubio-Tapia, MD

**LETTERS TO THE EDITOR** .....

**In defense of the anion gap** **269**

Michael Emmett, MD

**In Reply: In defense of the anion gap** **269**

Paloma Rodriguez Alvarez, MD; Vicente T. San Martin, MD; Oscar L. Morey-Vargas, MD

**DEPARTMENTS** .....

**CME Calendar** **266**
**CME/MOC Instructions** **320**