

TABLE OF CONTENTS

FROM THE EDITOR

Treating the thyroid: Trust the feedback loop 71

Studies show that, when testing to detect or monitor thyroid dysfunction, we order more free T3 and T4 levels than are necessary. We apparently should trust the thyroid-stimulating hormone feedback loop more than we do.

Brian F. Mandell, MD, PhD

THE CLINICAL PICTURE

Vesicular pityriasis rosea 81

A 37-year-old man presented with a 9-day history of disseminated pruritic rash on his trunk and extremities.

Xiaobei Liu, MD, PhD; Lizhi Ma, MD; Peimei Zhou, MD, PhD; Tao Chen, MD, PhD

1-MINUTE CONSULT

Which patients with presumed acute infectious diarrhea in an outpatient setting should undergo gastrointestinal pathogen panel testing? 83

Use of a gastrointestinal pathogen panel is warranted in certain individuals, such as those with fever, visible blood in the stool, sepsis, or a compromised immune system.

Brittany Jackson, MD; Sabrina Billings, MD; Dana M. Harris, MD; Jane Hata, PhD; Mary S. Hedges, MD

SYMPTOMS TO DIAGNOSIS

Thyroid obstacle course: Many challenges from a single gland 87

The patient presented to his primary care clinician for new irritability, anxiety, and insomnia. Laboratory testing revealed a low thyroid-stimulating hormone level.

Timothy W. Bodnar, MD; Sima Saberi, MD

CONTINUED ON PAGE 70

Upcoming Features

- Approach to cardiovascular disease in patients living with HIV
- Hyperglycemic crises in adults: A look at the 2024 consensus report



CLEVELAND
CLINIC
JOURNAL OF
MEDICINE

CONTINUED FROM PAGE 68

COMMENTARY

Respiratory virus season: Strategies for successful navigation 95

The authors review the burden, prevention, diagnosis, and treatment of influenza, COVID-19, and respiratory syncytial virus infection.

Pooja Cerrato, PharmD, BCPS; Steven Mawhorter, MD, DTM&H

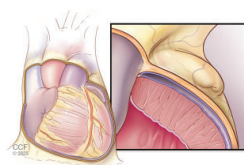
REVIEW

Hypoglycemia after bariatric surgery: Management updates 103

The authors discuss how to differentiate post-bariatric surgery hypoglycemia from other causes of hypoglycemia, highlight the evolving role of continuous glucose monitors in detecting it, and summarize management options.

Anira Iqbal, MD; Vinni Makin, MBBS, MD

REVIEW



Don't judge a book by its cover: Unusual presentations of pericardial disease 109

Taking a good history, performing a good physical examination, and properly reading an electrocardiogram and chest radiograph are the best starting points for diagnosing pericardial and mediastinal disease.

William A. Schiavone, DO; David S. Majdalany, MD

REVIEW

Wolff-Parkinson-White syndrome: Diagnostic and management strategies 119

The challenge lies in managing those with the Wolff-Parkinson-White pattern on electrocardiogram but no symptoms.

Masihullah Barat, MD; David Torres Barba, MD, PhD; Gordon Ho, MD

DEPARTMENTS

CME Calendar 73

Our Peer-Reviewers for 2024 79

CME/MOC Instructions 128

CME/MOC CREDIT

**Test your knowledge
of clinical topics and earn
AMA PRA Category 1 Credit™
and ABIM MOC points**
www.ccjm.org/content/latest-articles-cmemoc

**CLEVELAND
CLINIC
JOURNAL OF
MEDICINE**