

TABLE OF CONTENTS

FROM THE EDITOR

Anchors away 652

Before you read this, I recommend that you read the interesting article in this issue by Prakash et al, part of our Symptoms to Diagnosis series.

Brian F. Mandell, MD, PhD

THE CLINICAL PICTURE

A reticular eruption on the thighs 659

During cold winter weather, the patient had been wearing an electric heating pad between the thighs.

Li-wen Zhang, MD; Juan Wu, MD; Tao Chen, MD, PhD; Rong-hua Xu, MD

1-MINUTE CONSULT

Is the *MTHFR* gene mutation associated with thrombosis? 661

Clinicians should educate patients with this common polymorphism about the lack of evidence for associated thrombotic risk, and instead focus on modifiable risk factors for thrombosis.

Andrew Dhawan, MD, DPhil; Charis Eng, MD, PhD

1-MINUTE CONSULT

What is the role for terlipressin in hepatorenal syndrome? 664

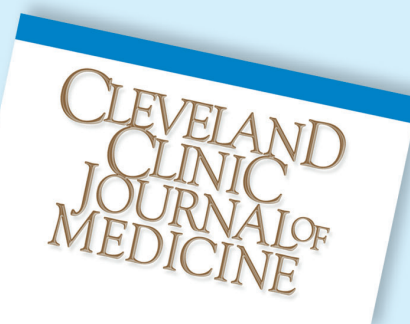
The drug is recommended as a first-line treatment of hepatorenal syndrome-related acute kidney injury, but it is associated with respiratory failure, especially in the setting of albumin administration, and certain comorbidities may increase the risk.

Stephanie N. Bass, PharmD; Aanchal Kapoor, MD; Christina C. Lindenmeyer, MD

CONTINUED ON PAGE 651

Upcoming Features

- When should patients be taking their BP medications?
- Obstructive sleep apnea: Current treatment options
- Grading the current consumer-grade wearable cardiac monitors



CONTINUED FROM PAGE 646

SYMPTOMS TO DIAGNOSIS

Elevated aminotransferases in a 62-year-old woman

669

Her medical history included gastroesophageal reflux disease and Sjögren syndrome. She had recently returned from travel to Malaysia.

Shahana Prakash, MD; Steven Moore, MD, PhD; Anthony Snow, MD; Kyle E. Brown, MD, FAASLD

REVIEW

CME | MOC

COVID-19: A management update

677

The authors examine current guidelines of the Infectious Diseases Society of America and the National Institutes of Health.

Kathryn Bash, MHSc, MSN, APRN-CNP; Gretchen Sacha, PharmD, BCCCP; Mani Latifi, MD

COMMENTARY

The new GFR equations:

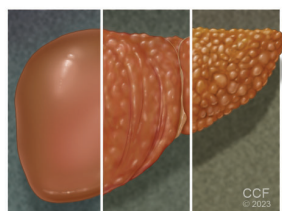
685

How will eliminating the race coefficient affect Black patients?

The authors discuss the history of equations for the glomerular filtration rate and potential clinical consequences of the new equations.

Paul Merchant, MD; Crystal Gadegbeku, MD, FAHA, FACP, FASN; Ali Mehdi, MD, Med, FACP, FASN; George Thomas, MD, FACP; Georges Nakhoul, MD, Med; Jonathan Taliercio, DO, FASN

REVIEW

**Cirrhosis: Primary care approaches to screening, immunization, and lifestyle modifications**

693

The authors review management of cirrhosis and complications such as esophageal varices and hepatocellular carcinoma, as well as chemical and medication exposures.

Asim Kichloo, MD; Michael Aljadah, MD; Michael Albosta, MD; Zain El-Amir, MD; Ghazaleh Goldar, MD; Muhammed Zatmar Khan, MD; Dushyant Singh Dahiya, MD; Farah Wani, MD

DEPARTMENTS

CME Calendar

657

CME/MOC Instructions

704

CME CREDIT TEST

Visit **WWW.CCJM.ORG**
Test your knowledge
of clinical topics and earn
AMA PRA Category 1 Credit™
and **ABIM MOC points**

CLEVELAND
CLINIC
JOURNAL OF
MEDICINE