

# TABLE OF CONTENTS

## FROM THE EDITOR .....

### **Cytokines and the still-baffling clinical biology of COVID-19** 381

The primary culprit is not certain. Is it all immune damage, or is the continued persistence of coronavirus playing a role?

Brian F. Mandell, MD, PhD

## COVID-19 CURBSIDE CONSULT .....

### **Clinical presentation and course of COVID-19** 384

Information about the clinical presentation and course of COVID-19 is rapidly evolving.

Ryan Miller, DO; Kristin Englund, MD

### **Cytokine storm and the prospects for immunotherapy with COVID-19** 389

Despite gaping holes in our knowledge, treatment is evolving.

Leonard H. Calabrese, DO

## THE CLINICAL PICTURE .....

### **Firm lesion on the lateral thigh** 394

A 41-year-old man presented with concern about a lesion he had first noticed 6 years earlier.

Morteza Khodaei, MD, MPH; Eric Kim, MD, PhD

### **Mönckeberg medial sclerosis** 396

A man with chronic kidney disease presents with pain and ulceration of the fingers.

Anthony Stack, DO; Sandra Sheffield, DO; Karan Seegobin, MBBS; Satish Maharaj, MBBS

## 1-MINUTE CONSULT .....

### **Does a short QT interval increase the risk of cardiac death in healthy people?** 398

No, but it may warrant further investigation to determine if the patient is at risk.

Ahmed Subahi, MD; Ahmed S. Yassin, MD; Oluwole Adegba, MD; Mohamed Shokr, MD; Luis Afonso, MD

## INTERPRETING KEY TRIALS .....

### **The role of ISCHEMIA in stable ischemic heart disease** 401

Decisions regarding treatment of stable ischemic heart disease must remain individualized.

Nikolaos Spiliadis, MD; Benjamin Zorach, MD; Kara Denby, MD; Stephen Ellis, MD

CONTINUED ON PAGE 380

CLEVELAND  
CLINIC  
JOURNAL OF  
MEDICINE

## Online Features

### Access

Cleveland Clinic Journal of Medicine content is readily available to all and is free of charge at [www.ccjm.org](http://www.ccjm.org).

### Services

- Navigate quickly to articles in current and past issues via links and pull-down menus at the top of the home page. Use the search function to find a specific article, or use the pull-down content menu to browse articles.
- Continuing medical education and maintenance of certification activities are accessible from the CME/MOC pull-down menu on the home page. Participation is free.
- Follow links on the home page to a calendar of upcoming CME events.
- Click on the PDF symbol at the top of any online article to read, download, or print the article in PDF format.

### Social Networking

To post a CCJM article to Facebook or Twitter, just click on the icon at the top of any online article.

[www.ccjm.org](http://www.ccjm.org)

CONTINUED FROM PAGE 378

**COMMENTARY** .....

**Stable coronary artery disease: Intervene or not? 410**

Stable coronary artery disease needs a patient-centered approach, and one size does not fit all.

Vinayak Nagaraja, MBBS, MS, MMed (Clin Epi), FRACP;  
A. Michael Lincoff, MD

**REVIEW** ..... **CME | MOC**

**Glucocorticoid-induced osteoporosis: Insights for the clinician 417**

Glucocorticoids cause significant bone loss, predominantly affecting trabecular bone, with consequent fragility fractures.

Shakaib Hayat, MD; Marina N. Magrey, MD

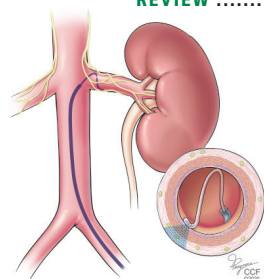
**REVIEW** ..... **CME | MOC**

**Optimize your documentation to improve Medicare reimbursement 427**

There's nothing more frustrating than not getting credit for work performed.

Ecler Ercole Jaqua, MD; Robert Chi, MD; Wessam Labib, MD, MPH;  
Marcos Uribe, MD; Juan Najarro, MD; Mary Hanna, MD

**REVIEW** ..... **CME | MOC**



**Procedures and devices to treat resistant hypertension in chronic kidney disease 435**

These treatments show potential. All but renal artery stenting are still experimental.

Rama Dilip Gajulapalli, MD; Johnny Chahine, MD;  
Florian Rader, MD; Ashish Aneja, MD

**EDITORIAL** .....

**Device-based therapies for resistant hypertension in chronic kidney disease: The continuing quest for a cure 444**

Device-based therapies have shown promise, but many points still need clarification.

George Thomas, MD

**DEPARTMENTS** .....

**CME Calendar 383**

**CME/MOC Instructions 448**

# Upcoming Features

- Troponin measurement in acute coronary syndrome
- COVID-19 and coagulopathy
- Pneumonia in alcohol use disorder
- Rhinosinusitis: The role of imaging
- HPV and cervical cancer
- Current asthma guidelines
- Aneurysm surveillance: Thoracic, renal, splenic
- Weight-loss drugs: What are the barriers?



**CLEVELAND  
CLINIC  
JOURNAL OF  
MEDICINE**