

# TABLE OF CONTENTS

## FROM THE EDITOR .....

### **An unending ode to pneumonia 127**

The examination, history, and sometimes, sputum Gram stain and culture results still inform our clinical judgment.

Brian F. Mandell, MD, PhD

## THE CLINICAL PICTURE.....

### **Acute lymphangitis 129**

Linear erythematous streaks sometimes spread with remarkable speed—within a few hours.

Yasuhiro Kano, MD; Takashi Momose, MD

## THE CLINICAL PICTURE.....

### **Posterior reversible encephalopathy syndrome 131**

On day 4, his blood pressure was 209/93 mm Hg, and CT showed new vasogenic edema in both occipital lobes.

Balaj Rai, MD; Robert M. Black, MD; Vinit Gilvaz, MD

## THE CLINICAL PICTURE.....

### **Leukoplakia of the tongue 133**

This potentially premalignant lesion is found mostly in middle-aged and older men who smoke.

Keiichi Ohta, DDS; Hitoshi Yoshimura, DDS, PhD

## COMMENTARY .....

### **Mitral valve prolapse and sudden cardiac death: A perspective on risk-stratification 136**

Mitral valve prolapse is common, but sudden cardiac death is rare. How can we stratify risk?

Aaron A.H. Smith, MD; Omer J. Iqbal, MD, FHRS

## SYMPTOMS TO DIAGNOSIS ..... CME MOC

### **Gastroenteritis gone rogue 139**

A 56-year-old woman presented with 2 weeks of vomiting and diarrhea. Her troubles were just beginning.

Jason Russ, MD; Areeba Kara, MD, MS, FACP, SFHM

CONTINUED ON PAGE 126

CLEVELAND  
CLINIC  
JOURNAL OF  
MEDICINE

## Online Features

### Access

Cleveland Clinic Journal of Medicine content is readily available to all and is free of charge at [www.ccjm.org](http://www.ccjm.org).

### Services

- Navigate quickly to articles in current and past issues via links and pull-down menus at the top of the home page. Use the search function to find a specific article, or use the pull-down content menu to browse articles.
- Continuing medical education and maintenance of certification activities are accessible from the CME/MOC pull-down menu on the home page. Participation is free.
- Follow links on the home page to a calendar of upcoming CME events.
- Click on the PDF symbol at the top of any online article to read, download, or print the article in PDF format.

### Social Networking

To post a CCJM article to Facebook or Twitter, just click on the icon at the top of any online article.

[www.ccjm.org](http://www.ccjm.org)

CONTINUED FROM PAGE 124

**REVIEW** ..... **CME** **MOC**  
**Community-acquired pneumonia: Strategies for triage and treatment** 145

Not all patients need to be hospitalized. Initial empiric treatment should be de-escalated as soon as possible.

Anita R. Modi, MD; Christopher S. Kovacs, MD

**REVIEW** ..... **CME** **MOC**  
**Severe megaloblastic anemia: Vitamin deficiency and other causes** 153

Determining the underlying cause and initiating prompt treatment are critical.

Daniel S. Socha, MD; Sherwin I. DeSouza, MD; Aron Flagg, MD; Mikkael Sekeres, MD, MS; Heesun J. Rogers, MD, PhD

**REVIEW** ..... **CME** **MOC**  
**Restrictive eating disorders in previously overweight adolescents and young adults** 165



Some patients with restrictive eating disorders are hiding in plain sight.

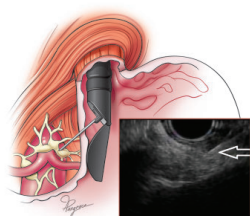
Radhika Rastogi, BA; Ellen S. Rome, MD, MPH

**EDITORIAL** .....  
**Atypical anorexia nervosa can be just as bad** 172

Eating disorders can occur in patients with a wide variety of weights.

Neville H. Golden, MD; Philip S. Mehler, MD

**REVIEW** .....  
**Endoscopic ultrasonography: An inside view** 175



Endoscopic ultrasonography has evolved from a diagnostic tool to a therapeutic procedure for a wide range of conditions.

C. Roberto Simons-Linares, MD; Praneet Wander, MD; John Vargo MD; Prabhleen Chahal, MD

**DEPARTMENTS** .....  
**CME Calendar** 138

**Our Peer-Reviewers for 2019** 184

**CME/MOC Instructions** Inside back cover

# Upcoming Features

- **Migraine drugs:**  
The old and the new
- **Bronchoscopic lung reduction**  
for emphysema
- **DXA scans after menopause**
- **ACC/AHA guidelines**  
for lipids and primary prevention
- **Steroid-associated bone loss**
- **Perinatal depression**
- **Cancer-associated thrombosis:**  
Predict, prevent, treat
- **Medical problems of anorexia**
- **Recurrent *C difficile* infection:**  
Recognize, manage, prevent
- **GERD: A practical approach**



**CLEVELAND  
CLINIC  
JOURNAL OF  
MEDICINE**