

# TABLE OF CONTENTS

## FROM THE EDITOR .....

### **A few pearls can help prepare the mind** 638

The caregiver with a prepared mind is more likely to experience the diagnostic epiphany.

B.F. MANDELL

## THE CLINICAL PICTURE.....

### **Vulvar and gluteal manifestations of Crohn disease** 645

Crohn disease is associated with extraintestinal manifestations in up to 45% of patients.

A.C. MORENO, O. GOJE, M.P. PILIANG, AND P. BATUR

## THE CLINICAL PICTURE.....

### **A complication of enoxaparin injection** 648

Computed tomography revealed a hematoma measuring 15 by 15 cm compressing the bladder and causing hydronephrosis.

A.M. SHARAYAH, S. ZAIGHAM, N. HAJJAJ, AND M. MANIAR

## 1-MINUTE CONSULT .....

### **What are the risks to inpatients during hospital construction or renovation?** 650

Risks include mold infection, Legionnaires disease, sleep deprivation, exacerbation of lung disease, and physical injury.

A. KANJ, Y. GAO, AND A.O. SOUBANI

## 1-MINUTE CONSULT .....

### **Does my patient need maintenance fluids?** 653

The question seems like it should have an easy answer. However, there is no consensus.

J. SANCHEZ AND R. LICHTENBERG

CONTINUED ON PAGE 636

CLEVELAND  
CLINIC  
JOURNAL OF  
MEDICINE

## Online Features

### Access

Cleveland Clinic Journal of Medicine content is readily available to all and is free of charge at [www.ccjm.org](http://www.ccjm.org).

### Services

- Navigate quickly to articles in current and past issues via links on the home page and pull-down menus at the top of the page. Use the search function to find a specific article, or browse by topic or article type.
- Continuing medical education and maintenance of certification activities are accessible from article links and from a CME pull-down menu on the home page. Participation is free.
- Follow links on the home page to news, summaries of recent scientific meetings, and interactive quizzes.
- Click on the PDF symbol at the top of any online article to read, download, or print the article in PDF format.

### Social Networking

To post a CCJM article to Facebook or Twitter, just click on the icon at the top of any online article.

[www.ccjm.org](http://www.ccjm.org)

CONTINUED FROM PAGE 634

**MEDICAL GRAND ROUNDS** .....

**Myopathy for the general internist: Statins and much more** **656**

How to evaluate and manage muscle complaints in patients taking a statin, interpret creatine kinase test results, and recognize common as well as potentially dangerous myopathies.

C.V. ODDIS

**SYMPTOMS TO DIAGNOSIS** ..... **ABIM CME MOC ACCREDITED**

**A 66-year-old man with abnormal thyroid function tests** **666**

A 66-year-old man presents with an acute exacerbation of COPD requiring hospitalization.

Y.N. ALHALASEH, Z.A. ABDULELAH, A.O. ARMOUTI, AND A.A. ZAYED

**REVIEW** ..... **ABIM CME MOC ACCREDITED**

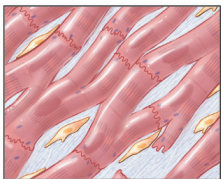
**2019 Update in perioperative cardiovascular medicine** **677**

Studies of preoperative cardiac risk assessment, perioperative medication management, and postoperative complications.

S.L. COHN, P.J. GRANT, AND B. SLAWSKI

**REVIEW** ..... **ABIM CME MOC ACCREDITED**

**Cardiovascular complications of systemic sclerosis: What to look for** **685**



Pulmonary arterial hypertension, atherosclerosis, heart failure, arrhythmias, pericardial disease, and valvular heart disease.

P. MANI, D. GONZALEZ, S. CHATTERJEE, AND M.D. FAULX

**DEPARTMENTS** .....

**CME Calendar** **647**

**CME/MOC Instructions** **Inside back cover**

# Upcoming Features

- **Functional heartburn: The brain-gut connection**
- **Gabapentin for alcohol use disorder: Opportunity for abuse?**
- **Barrett esophagus: Treatable cancer precursor**
- **Cardio-obstetrics: Better maternal outcomes**
- **Migraine lifestyle hacks**
- **Familial hypercholesterolemia: Advances, recommendations**
- **STI update: Testing, treatment, trends**
- **Fever in a returning traveler**
- **Sepsis: Guideline-based management**



CLEVELAND  
CLINIC  
JOURNAL OF  
MEDICINE