

## Online Features

### Access

Cleveland Clinic Journal of Medicine content is readily available to all and is free of charge at [www.ccjm.org](http://www.ccjm.org). On your first visit, we will ask you to take a few minutes to register, but subsequent visits will be unencumbered except for an occasional request for your e-mail address when you visit using another device (eg, mobile phone, tablet).

### Services

- Navigate quickly to articles in current and past issues via links on the home page and pull-down menus at the top of the page. Use the search function to find a specific article, or browse by topic or article type.
- Continuing medical education activities are accessible from article links and from a CME pull-down menu on the home page. Participation is free.
- Follow links on the home page to news, summaries of recent scientific meetings, and interactive quizzes.
- Click on the PDF symbol at the top of any online article to read, download, or print the article in PDF format.

### Social Networking

To post a CCJM article to Facebook or Twitter, just click on the icon at the top of any online article.

[www.ccjm.org](http://www.ccjm.org)

AUGUST 2018

## TABLE OF CONTENTS

### FROM THE EDITOR

#### The bias of word choice and the interpretation of laboratory tests 577

Words matter. Calling ALT and AST “liver function tests” can lead to premature diagnosis of liver disease.

B.F. MANDELL

### THE CLINICAL PICTURE

#### Angular cheilitis induced by iron deficiency anemia 581

Causes include nutritional deficiencies, local and systemic factors, and drug treatment.

M.H. AYESH

### THE CLINICAL PICTURE

#### Calcific uremic arteriolopathy 584

A 51-year-old man with end-stage renal disease presented with extensive necrotic ulcers and eschar on both legs.

M. SHETTY, Y. CHOWDHURY, AND B. YEGNESWARAN

### THE CLINICAL PICTURE

#### Palmoplantar exanthema and liver dysfunction 591

The patient admitted to having had unprotected sex with a female sex worker.

T. FUJIKAWA AND H. MATSUURA

### MEDICAL GRAND ROUNDS

#### Diagnosing and treating bipolar disorder in primary care 601

Many patients have undiagnosed bipolar depression, ie, depression with shifts to periods of mania.

P. KOIRALA AND A. ANAND

### 1-MINUTE CONSULT

#### Which patients with a parapneumonic effusion need a chest tube? 609

Hospitalized patients with pneumonia who develop a complicated effusion or empyema need one.

S.A. HELGESON, B.T. HIROTO, S.J. BILLINGS, C.L. SCOTT, AND M.D. LEWIS



CONTINUED ON PAGE 576

**CME CREDIT REVIEW** ..... 612

**Liver enzymes:  
No trivial elevations, even if asymptomatic**

All persistent elevations of liver enzymes need a methodical evaluation and an appropriate working diagnosis.

B. AGGANIS, D. LEE, AND T. SEPE

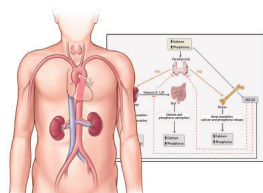
**CME CREDIT REVIEW** ..... 619

**Diabetes and pregnancy:  
Risks and opportunities**

Internists can reduce the risks by optimizing glycemic control before conception and providing effective counseling.

H. LEWIS, R. EGERMAN, A. KAZORY, AND M. SATTARI

**REVIEW** ..... 629



**Phosphorus binders:  
The new and the old,  
and how to choose**

The pathophysiology and control of hyperphosphatemia in kidney disease, focusing on phosphorus binders.

A. SEKAR, T. KAUR, J.V. NALLY, JR, H. RINCON-CHOLES, S. JOLLY, AND G. NAKHOUL

**EDITORIAL** ..... 639

**Phosphorus in kidney disease:  
Culprit or bystander?**

As kidney function declines, phosphorus accumulates, but the process is complex.

M.S. PARMAR

**DEPARTMENTS** ..... 590

**CME Calendar** ..... 590

**CME Instructions** ..... 643

# Upcoming Features

- **Coronary calcium scoring:  
A useful test**
- **Genitourinary syndrome  
of menopause  
and breast cancer**
- **Atrial fibrillation ablation  
for the referring physician**
- **Bicuspid aortic valve:  
Basics and beyond**
- **Benign breast problems**
- **Vasovagal syncope:  
Rational workup**
- **Men's health 2018:  
BPH, prostate cancer,  
erectile dysfunction,  
supplements**
- **Who should carry  
an epinephrine pen?**
- **MGUS:  
Determining the significance**



DEDICATED TO LIFELONG LEARNING  
**CLEVELAND  
CLINIC  
JOURNAL OF  
MEDICINE**