

TABLE OF CONTENTS

FROM THE EDITOR

Training physician leaders to save the health system...and us 427

The success of the health system and the emotional well-being and clinical skills of its physicians are clearly interrelated.

B.F. MANDELL

THE CLINICAL PICTURE.....

Aortic dissection presenting as ischemic limb 438

With surgical repair and blood pressure control, the patient recovered and left the hospital 1 week later.

F. KHALID AND S. GUPTA

THE CLINICAL PICTURE.....

Central nervous system lymphoma mimicking Bell palsy 442

Failure of presumed Bell palsy to improve should prompt an evaluation for an underlying condition.

K. SHIKINO, S. SUZUKI, T. UEHARA, AND M. IKUSAKA

EDITORIAL

Is a detailed neurologic physical examination always necessary? 444

In medicine, we need all the help we can get.

R.J. LEDERMAN

THE CLINICAL PICTURE.....

Necrotizing fasciitis after a watercraft accident 448

Despite intravenous antibiotics and surgical debridement, the patient's right leg had to be amputated.

N. FUKUI, M. DELMAN, T.N. VINH, AND S. DJURKOVIC

COMMENTARY

Reverse T₃ or perverse T₃? Still puzzling after 40 years 450

Few situations require measuring reverse T₃; diagnosis of euthyroid sick syndrome may be one of them.

C. GOMES-LIMA AND K.D. BURMAN

CONTINUED ON PAGE 426

CLEVELAND
CLINIC
JOURNAL OF
MEDICINE

Online Features

Access

Cleveland Clinic Journal of Medicine content is readily available to all and is free of charge at www.ccjm.org. On your first visit, we will ask you to take a few minutes to register, but subsequent visits will be unencumbered except for an occasional request for your e-mail address when you visit using another device (eg, mobile phone, tablet).

Services

- Navigate quickly to articles in current and past issues via links on the home page and pull-down menus at the top of the page. Use the search function to find a specific article, or browse by topic or article type.
- Continuing medical education activities are accessible from article links and from a CME pull-down menu on the home page. Participation is free.
- Follow links on the home page to news, summaries of recent scientific meetings, and interactive quizzes.
- Click on the PDF symbol at the top of any online article to read, download, or print the article in PDF format.

Social Networking

To post a CCJM article to Facebook or Twitter, just click on the icon at the top of any online article.

www.ccjm.org

CONTINUED FROM PAGE 424

SMART TESTING

Is Pap testing still needed after hysterectomy? 456

There is no need to continue Pap testing after hysterectomy for a benign indication.

H.G. SOBEL, E. EVERETT, AND L.D. LIPOLD

CME CREDIT CURRENT DRUG THERAPY

Hydroxychloroquine: An old drug with new relevance 459

This antimalarial drug is now approved to treat discoid lupus, systemic lupus erythematosus, and rheumatoid arthritis.

E.A. SHIPPEY III, V.D. WAGLER, AND A.N. COLLAMER

CME CREDIT REVIEW

Evaluating suspected pulmonary hypertension: A structured approach 468

With a myriad of causes and nonspecific symptoms, pulmonary hypertension needs a methodic diagnostic approach.

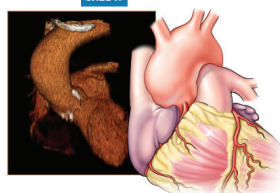
A. BHATNAGAR, J. WIESEN, R. DWEIK, AND N.F. CHAISSON

CME CREDIT REVIEW

Thoracic aortic aneurysm: How to counsel, when to refer 481

Be alert for clues on chest imaging, and consider screening first-degree relatives of patients known to have aortic disease.

F. CIKACH, M.Y. DESAI, E.E. ROSELLI, AND V. KALAHASTI



DEPARTMENTS

Letters to the Editor 431

Readers comment on antiphospholipid antibody syndrome (February 2018).

CME Calendar 455

CME Instructions 493

Upcoming Features

- **Coronary calcium scoring: A user's guide**
- **The myth of dry drowning**
- **Cardiac rehabilitation: A class 1 indication**
- **Should we supplement calcium and vitamin D ?**
- **Inpatient migraine treatment**
- **Renal disease in surgical patients: Minimizing the impact**
- **Women with diabetes: Special concerns**
- **Life after critical care: The journey forward**



DEDICATED TO LIFELONG LEARNING
CLEVELAND CLINIC JOURNAL OF MEDICINE