

# TABLE OF CONTENTS

## FROM THE EDITOR .....

### **A new reason to reconsider that antibiotic prescription: The microbiome** 906

Prescribing an antibiotic is a far more complicated and long-lasting affair than most of us thought.

B.F. MANDELL

## THE CLINICAL PICTURE.....

### **Lung complications of prescription drug abuse** 910

Opioid tablets crushed, then injected intravenously.

J.D. MCCAIN, M.E. WERLANG, A. KHOOR, AND I. MIRA-AVENDANO

### **Acute necrotizing esophagitis** 912

Poorly controlled diabetes, confusion, coffee-ground emesis.

T. KONDO

## 1-MINUTE CONSULT .....

### **What can I do when first-line measures are not enough for vasovagal syncope?** 920

Second-line measures include midodrine, fludrocortisone, beta-blockers, and SSRIs, but evidence is limited.

E. HUTT-CENTENO AND K.A. MAYUGA

### **Are anti-TNF drugs safe for pregnant women with inflammatory bowel disease?** 923

Active IBD poses a greater risk than continuing drug therapy.

G.T. BRENNAN, A. DUONG, E.T. NGUYEN, AND D.L. NGUYEN

### **Do all hospital inpatients need cardiac telemetry?** 925

Routine cardiac telemetry raises costs and does little.

M. BAIBARS, Y. AL-KHADRA, Z. FANARI, H.M. PACHA, M. SOUD, AND M.C. ALRAIES

## MEDICAL GRAND ROUNDS.....

### **Our missing microbes: Short-term antibiotic courses have long-term consequences** 928

Is the rise in chronic diseases due to loss of microbial diversity?

M.J. BLASER

CONTINUED ON PAGE 905

CLEVELAND  
CLINIC  
JOURNAL OF  
MEDICINE

## Online Features

### Access

*Cleveland Clinic Journal of Medicine* content is readily available to all and is free of charge at [www.ccjm.org](http://www.ccjm.org). On your first visit, we will ask you to take a few minutes to register, but subsequent visits will be unencumbered except for an occasional request for your e-mail address when you visit using another device (eg, mobile phone, tablet).

### Services

- Navigate quickly to articles in current and past issues via links on the home page and pull-down menus at the top of the page. Use the search function to find a specific article, or browse by topic or article type.
- Continuing medical education activities are accessible from article links and from a CME pull-down menu on the home page. Participation is free.
- Follow links on the home page to news, summaries of recent scientific meetings, and interactive quizzes.
- Click on the PDF symbol at the top of any online article to read, download, or print the article in PDF format.

### Social Networking

To post a *CCJM* article to Facebook or Twitter, just click on the icon at the top of any online article.

[www.ccjm.org](http://www.ccjm.org)

# Upcoming Features

- Blood pressure: Achieving lower goals in the real world
- Benign breast problems
- Cardiac amyloidosis: Progress in diagnosis, treatment
- Papilloma virus update: Defeating cervical cancer
- Subclinical hypothyroidism: When to treat
- Monoclonal gammopathy of undetermined significance
- Detecting fibrosis in hepatitis C and fatty liver disease
- Should everyone with type 2 diabetes take metformin?
- Postural tachycardia: Evaluation and management



DEDICATED TO LIFELONG LEARNING  
CLEVELAND  
CLINIC  
JOURNAL OF  
MEDICINE

## DECEMBER 2018

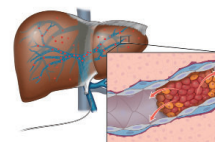
CONTINUED FROM PAGE 902

### REVIEWS

#### Beta-cell therapies for type 1 diabetes: Transplants and bionics 931

Chief among the challenges: millions of people have diabetes.

K. BUX RODEMAN AND B. HATIPOGLU



#### Cannabis for peripheral neuropathy: The good, the bad, and the unknown 943

Even where it is legal, doctors should recommend it only after careful consideration.

V. MODESTO-LOWE, R. BOJKA, AND C. ALVARADO



#### Geriatrics update 2018: Challenges in mental health, mobility, and postdischarge care 953

A review of study results from the last 2 years.

L.D. KIM AND A.Z. HASHMI



#### Narcolepsy: Diagnosis and management 959

Treatments can offer enhanced quality of life.

E.C. GOLDEN AND M.C. LIPFORD

### OPINION

#### Telemedicine: Past, present, and future 938

Low reimbursement, licensing, practice issues limit its use.

J.H. MAHAR, G.J. ROSENCRANCE, AND P.A. RASMUSSEN

#### Cannabis for chronic pain: Not a simple solution 950

Real concerns include amotivation, worsening psychiatric states, chronic disability, and chemical dependence.

X.F. JIMENEZ

### DEPARTMENTS

#### Letters to the Editor 908

A reader comments on the use of prostate-specific antigen (November 2018).

#### Correction 913

An error occurred in Chaitoff A, Killeen TC, Nielsen C. Men's health 2018: BPH, prostate cancer, erectile dysfunction, supplements. *Cleve Clin J Med* 2018; 85(11):871-880. doi:10.3949/ccjm.85a.18011.

#### CME Calendar 970

#### CME Instructions 971