

Online Features

Access

Cleveland Clinic Journal of Medicine content is readily available to all and is free of charge at www.ccjm.org. On your first visit, we will ask you to take a few minutes to register, but subsequent visits will be unencumbered except for an occasional request for your e-mail address when you visit using another device (eg, mobile phone, tablet).

Services

- Navigate quickly to articles in current and past issues via links on the home page and pull-down menus at the top of the page. Use the search function to find a specific article, or browse by topic or article type.
- Continuing medical education activities are accessible from article links and from a CME pull-down menu on the home page. Participation is free.
- Follow links on the home page to news, summaries of recent scientific meetings, and interactive quizzes.
- Click on the PDF symbol at the top of any online article to read, download, or print the article in PDF format.

Social Networking

To post a CCJM article to Facebook or Twitter, just click on the icon at the top of any online article.

www.ccjm.org

JANUARY 2018

TABLE OF CONTENTS

FROM THE EDITOR	
A New Year's transition and looking forward	6
Time to take stock of advances in—and obstacles to—the delivery of quality healthcare.	
B.F. MANDELL	
THE CLINICAL PICTURE	
Hypothermia and severe first-degree heart block	10
A 96-year-old woman with hypertension, diabetes, and dementia was found unresponsive and was transferred to the hospital.	
K.B.U. LO AND A. NELSON	
THE CLINICAL PICTURE	
Dysmorphic red blood cell formation	12
A 23-year-old woman presented with hematuria and dysmorphic red blood cells in the urinary sediment.	
J. LUCAS DAZA, M. DE ROSA, AND G. DE ROSA	
EDITORIAL	
Quality in urine microscopy: The eyes of the beholder	22
The renal patient is best served when the nephrologist familiar with the case performs the urine microscopy.	
J.F. SIMON AND A. NANAVATI	
REVIEW	
High users of healthcare: Strategies to improve care, reduce costs	25
A minority of patients called “high users” consume a lot of healthcare, especially in the emergency department. But therein lies an opportunity.	
N. SIEKMAN AND R. HILGER	
1-MINUTE CONSULT	
What is the hepatitis B vaccination regimen in chronic kidney disease?	32
For those with advanced chronic kidney disease, the authors recommend a higher dose, more doses, or both.	
K.Y. ONG, H.Y. WONG, AND G.Y. KHEE	

CONTINUED ON PAGE 4

CONTINUED FROM PAGE 3

1-MINUTE CONSULT

Do cardiac risk stratification indexes accurately estimate perioperative risk in noncardiac surgery patients? 35

Neither of the 2 indexes most often used is completely accurate, and neither is better than the other.

R. MANDALIYA AND G. MERLI

CME CREDIT IM BOARD REVIEW

A 50-year-old woman with new-onset seizure 41

After prodromal symptoms, she lost consciousness for about 1 minute, with jerking.

J.R. QUEEN AND S. BOGNER

CME CREDIT REVIEW

Idiopathic hypercalciuria: Can we prevent stones and protect bones? 47

Patients should increase their fluid intake, follow a diet low in salt and animal protein, and take a thiazide diuretic.

L.E. RYAN AND S.W. ING

CME CREDIT REVIEW

Preventing cardiovascular disease in older adults: One size does not fit all 55

The balance of risk and benefit may differ considerably for 2 patients of the same age if one is fit and the other is frail.

A.R. ORKABY, O. ONUMA, S. QAZI, J.M. GAZIANO, AND J.A. DRIVER

EDITORIAL

Frailty and cardiovascular disease: A two-way street? 65

Frailty may be both a cause and a consequence of cardiovascular disease.

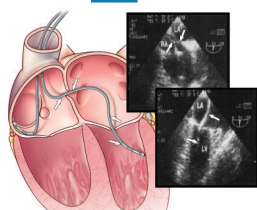
E. JOYCE

CME CREDIT REVIEW

Detecting and managing device leads inadvertently placed in the left ventricle 69

How it happens, how to prevent it, how to detect and correct it immediately, and how to manage cases discovered long after.

R.G. TROHMAN AND P.S. SHARMA



DEPARTMENTS

CME Calendar 8

CME Instructions 76

Upcoming Features

- **Cardiorenal syndrome: A stepwise approach**
- **Concomitant arterial and venous thromboembolism**
- **Transient neurologic syndromes: Diagnostic strategies**
- **Reconciling medications for older adults**
- **Female athlete triad: Who to screen, what to ask**
- **PCI for stable angina: Point and counterpoint**
- **Testing for coronary disease in patients with LBBB**
- **Troponins elevation: Not just in acute coronary syndrome**
- **Reverse T3 or 'perverse' T3?**



DEDICATED TO LIFELONG LEARNING
CLEVELAND CLINIC JOURNAL OF MEDICINE