



Online Features

Access

Cleveland Clinic Journal of Medicine content is readily available to all and is free of charge at www.ccjm.org. On your first visit, we will ask you to take a few minutes to register, but subsequent visits will be unencumbered except for an occasional request for your e-mail address when you visit using another device (eg, mobile phone, tablet).

Services

- Navigate quickly to articles in current and past issues via links on the home page and pull-down menus at the top of the page. Use the search function to find a specific article, or browse by topic or article type.
- Continuing medical education activities are accessible from article links and from a CME pull-down menu on the home page. Participation is free.
- Follow links on the home page to news, summaries of recent scientific meetings, and interactive quizzes.
- Click on the PDF symbol at the top of any online article to read, download, or print the article in PDF format.

Social Networking

To post a *CCJM* article to Facebook or Twitter, just click on the icon at the top of any online article.

www.ccjm.org

NOVEMBER 2017

TABLE OF CONTENTS

FROM THE EDITOR

Toward understanding chronic kidney disease in African Americans 824

African Americans respond differently to some treatments than the white male patients who participated in the clinical trials.

B.F. MANDELL

THE CLINICAL PICTURE

Scapular rash and endocrine neoplasia 831

A woman in her 30s presents with an itchy skin-colored rash over her scapula of 8 years' duration.

M. RAZMI T, D. CHATTERJEE, AND D. PARSAD

THE CLINICAL PICTURE

Iliopsoas abscess 833

A 52-year-old woman with diabetes presents with pain in her lower abdomen and back.

Y. LI, H. FUNAKOSHI, T. SHIGA, AND S. FUJITANI

1-MINUTE CONSULT

Can effective obesity counseling fit into the 20-minute appointment? 835



Information from a previsit questionnaire lays the foundation for effective and reimbursable counseling and interventions.

J.A. ZAMBRANO AND B. BURGUERA

EDITORIAL

Obesity counseling: Beyond 'eat less, move more' 838

Not all cancers are treated the same, and not all patients with diabetes are treated the same. The same should go for patients with obesity.

W.S. BUTSCH

CONTINUED ON PAGE 821

Upcoming Features

- **Physical examination:**
Still valuable for dyspnea
- **Idiopathic calciuria,**
kidney stones,
and bone health
- **Acute cardiorenal syndrome:**
A stepwise approach
- **Perioperative risk:**
Which index is best?
- **Female athlete triad:**
Who to screen, what to ask
- **Reconciling medications**
for older adults
- **Transient neurologic problems:**
A diagnostic approach
- **Angioplasty**
for stable angina:
Why do we still do it?
- **Weight-loss drugs:**
What you need to know



NOVEMBER 2017

CONTINUED FROM PAGE 815

IM BOARD REVIEW.....

Fever after recent travel 840

The patient had been taking a TNF-alpha inhibitor and had recently returned from Mexico.

H. REHMAN

IM BOARD REVIEW.....

Abdominal pain and bloody diarrhea in a 32-year-old woman 847

The patient also has numerous painful ulcerations on her skin and in her mouth.

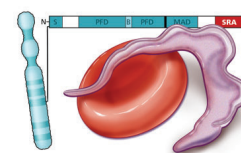
N. AGRAWAL, A. SINGH, T. PLESEC, D. LISKA, B. CONFER, J. PHILPOTT, AND F. RIEDER

ADDRESSING DISPARITIES IN HEALTHCARE.....

Chronic kidney disease in African Americans: Puzzle pieces are falling into place 855

African Americans are disproportionately affected; genetic variants in *APOL1* provide an important explanation.

J.V. NALLY, JR



CME CREDIT

REVIEW.....

2017 Update in perioperative medicine: 6 questions answered 863

Topics: cardiac risk assessment, surgery after percutaneous intervention, statins, sleep apnea, bridging anticoagulation, and frailty.

R. MUNYON, S.L. COHN, B. SLAWSKI, G.W. SMETANA, AND K. PFEIFER

CME CREDIT

REVIEW.....

ADHD: Overdiagnosed and overtreated, or misdiagnosed and mistreated? 873

Combined behavioral and drug therapy is best.

M.J. MANOS, K. GIULIANO, AND E. GEYER

DEPARTMENTS.....

CME Calendar 830

CME instructions 881