

TABLE OF CONTENTS

FROM THE EDITOR

The simple lab test is sometimes more complex than we think, if we think about it at all 13

Before ordering more tests because of an abnormal laboratory result (eg, elevated creatine kinase), think about its biology.

B.F. MANDELL

THE CLINICAL PICTURE

Bony bumps in the mouth 17

Torus palatinus and torus mandibularis are benign bony overgrowths arising from cortical bone.

S. CHATTERJEE

THE CLINICAL PICTURE

Eventration of the diaphragm presenting as spontaneous pneumothorax 19

A 25-year-old man presents with sudden onset of right-sided back and chest pain and shortness of breath.

P. GO AND Z. HAMMOUD

SMART TESTING

Serum allergen-specific IgE testing: How much is too much? 21

The Choosing Wisely campaign and others advocate against indiscriminate IgE testing in evaluating allergy.

C.K. LAU AND C. NAUGLER

1-MINUTE CONSULT

Obstructive sleep apnea: Who should be tested, and how? 25

Only 10% of people with obstructive sleep apnea are diagnosed—a dismal statistic, considering the consequences.

M.B. MANNE AND G. RUTECKI

IM BOARD REVIEW

Not all abdominal pain is gastrointestinal 29

A 31-year-old woman presents with right mid-abdominal pain that began 1 day ago.

M. BOULES, M. MICHAEL, J. CHANG, B. VROOMAN, M. KROH, AND M. RIZK

CONTINUED ON PAGE 12



Online Features

Access

Cleveland Clinic Journal of Medicine content is readily available to all and is free of charge at www.ccjm.org. On your first visit, we will ask you to take a few minutes to register, but subsequent visits will be unencumbered except for an occasional request for your e-mail address when you visit using another device (eg, mobile phone, tablet).

Services

- Navigate quickly to articles in current and past issues via links on the home page and pull-down menus at the top of the page. Use the search function to find a specific article, or browse by topic or article type.
- Continuing medical education activities are accessible from article links and from a CME pull-down menu on the home page. Participation is free.
- Follow links on the home page to news, summaries of recent scientific meetings, and interactive quizzes.
- Click on the PDF symbol at the top of any online article to read, download, or print the article in PDF format.

Social Networking

To post a CCJM article to Facebook or Twitter, just click on the icon at the top of any online article.

www.ccjm.org

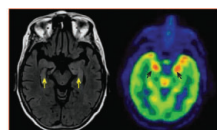
CONTINUED FROM PAGE 8

CME CREDIT REVIEW **Approach to asymptomatic creatine kinase elevation** **37**

Standard cutoffs may be too low. First, repeat the test after 7 days without exercise.

S. MOGHADAM-KIA, C.V. ODDIS, AND R. AGGARWAL

CME CREDIT REVIEW **Autoantibody-mediated encephalitis: Not just paraneoplastic, not just limbic, and not untreatable** **43**



Suspect these syndromes in cases of unexplained seizure, encephalitis, or acute-onset psychiatric syndromes.

A. JAMMOUL, Y. LI, AND A. RAE-GRANT

CME CREDIT REVIEW **Managing interstitial lung disease detected on CT during lung cancer screening** **55**

How to distinguish among the most common forms, and the role of the primary care physician in managing them.

B.D. SOUTHERN, R.G. SCHERAGA, AND R. YADAV

CME CREDIT REVIEW **Alcohol withdrawal syndrome in medical patients** **67**

Deprived of alcohol while in the hospital, many alcoholic patients go into withdrawal. Clinicians should be ready.

J.S. GORTNEY, J.N. RAUB, P. PATEL, L. KOKOSKA, M. HANNAWA, AND A. ARGYRIS

DEPARTMENTS **CME Calendar** **7**

Letters to the Editor **15**
Readers comment on vitamin B₁₂ deficiency (July 2015) and on preoperative testing (October 2015).

CME Test Directions **80**

Upcoming Features

- **Malpractice:**
Two perspectives
- **The SPRINT trial:**
In systolic pressure, how low should you go?
- **Prescribing exercise**
for weight loss
- **Advances in treating**
dyslipidemia
- **When COPD**
and sleep apnea overlap
- **Celiac disease:**
Genes, diet, microbiome?
- **Preventing suicide**
in veterans
- **Neurologic emergencies:**
When minutes count

