

TABLE OF CONTENTS

FROM THE EDITOR

The art and science of clinical medicine and editorial policy 201

Most clinical decisions are made without any applicable data from clinical studies. This is the “art” of medicine.

B.F. MANDELL

THE CLINICAL PICTURE.....

Heart on the right may sometimes be ‘right’ 206

When a 76-year-old man presented with right-sided chest pain, his ECG suggested dextrocardia.

P. SHARMA, V. NAGARAJAN, AND D.A. UNDERWOOD

THE CLINICAL PICTURE.....

Eruptive xanthoma 209

A man with a total cholesterol level of 1,045 mg/dL and a hemoglobin A_{1c} of 12.6% presents with a new rash.

M. ABDELGHANY AND S. MASSOUD

THE CLINICAL PICTURE.....

A nonhealing oral ulcer in a man with HIV 211

The workup eventually led to a diagnosis of oral tuberculosis secondary to active pulmonary tuberculosis.

L.TURRIÓN MERINO, G. GARCÍA SERRANO, A. GONZÁLEZ GARCÍA, E. HERMOSA ZARZA, M.U. GARCÍA DE LA VEGA, R. CARRILLO GIJÓN, AND P. JAÉN OLASOLO

1-MINUTE CONSULT

Can the test for human papillomavirus DNA be used as a stand-alone, first-line screening test for cervical cancer? 213

Yes. The FDA has approved the test for this indication, and guideline committees are reviewing the data.

X.W. JIN, M.L. MCKENZIE, AND B. YEN-LIEBERMAN

THE CLINICAL PICTURE.....

Corkscrew hairs 216

Scurvy is not a disease of the past: 18% of Americans don’t get enough vitamin C.

K.A. VOGT AND J.S. LEHMAN

CONTINUED ON PAGE 200

CLEVELAND
CLINIC
JOURNAL OF
MEDICINE

Online Features

Access

Cleveland Clinic Journal of Medicine content is readily available to all and is free of charge at www.ccjm.org. On your first visit, we will ask you to take a few minutes to register, but subsequent visits will be unencumbered except for an occasional request for your e-mail address when you visit using another device (eg, mobile phone, tablet).

Services

- Navigate quickly to articles in current and past issues via links on the home page and pull-down menus at the top of the page. Use the search function to find a specific article, or browse by topic or article type.
- Continuing medical education activities are accessible from article links and from a CME pull-down menu on the home page. Participation is free.
- Follow links on the home page to news, summaries of recent scientific meetings, and interactive quizzes.
- Click on the PDF symbol at the top of any online article to read, download, or print the article in PDF format.

Social Networking

To post a *CCJM* article to Facebook or Twitter, just click on the icon at the top of any online article.

www.ccjm.org

CONTINUED FROM PAGE 198

IM BOARD REVIEW.....

A 57-year-old woman with abdominal pain 217

She was admitted with a diagnosis of acute diverticulitis, but then one thing led to another.

R. PALLAVI AND B. POPIS-MATEJAK

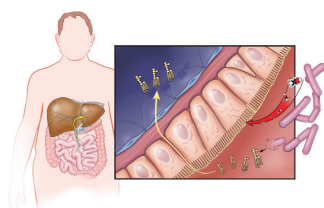


REVIEW.....

Alcoholic hepatitis: Challenges in diagnosis and management 226

Severe alcoholic hepatitis is a devastating acute condition that requires early recognition and specialized tertiary medical care.

M. DUGUM, N. ZEIN, A. MCCULLOUGH, AND I. HANOUNEH



MEDICAL GRAND ROUNDS.....

The Surviving Sepsis Campaign: Where have we been and where are we going? 237

Evidence-based guidelines and performance-improvement practices will, it is hoped, reduce mortality from sepsis worldwide.

R.P. DELLINGER



REVIEW.....

Resuming anticoagulation after hemorrhage: A practical approach 245

Foremost on our minds is the risk of another hemorrhage. Less obvious is the ongoing risk of thrombosis.

A. COLANTINO, A.K. JAFFER, AND D.J. BROTMAN

DEPARTMENTS.....

CME Calendar 202

Letters to the editor 203

Readers comment on pheochromocytoma (November 2014) and pulmonary tuberculosis (January 2015).

CME Directions Inside back cover

Upcoming Features

- Managing medication during transitions of care
- Targeted therapies for psoriasis, melanoma, basal cell carcinoma
- Mammography starting at age 40: Pro and con
- ST-segment elevation: Differential diagnosis
- Reducing the risk of falls in the elderly
- Long-term problems of liver transplant recipients
- Penicillin allergy: A practical guide
- Immunizations in special populations
- E-cigarettes: Gateway drug or nicotine replacement?
- Botulinum toxin injections for urologic conditions



DEDICATED TO LIFELONG LEARNING
CLEVELAND CLINIC JOURNAL OF MEDICINE