

Online Features

Access

Cleveland Clinic Journal of Medicine content is readily available to all and is free of charge at www.ccjm.org. On your first visit, we will ask you to take a few minutes to register, but subsequent visits will be unencumbered except for an occasional request for your e-mail address when you visit using another device (eg, mobile phone, tablet).

Services

- Navigate quickly to articles in current and past issues via links on the home page and pull-down menus at the top of the page. Use the search function to find a specific article, or browse by topic or article type.
- Continuing medical education activities are accessible from article links and from a CME pull-down menu on the home page. Participation is free.
- Follow links on the home page to news, summaries of recent scientific meetings, and interactive quizzes.
- Click on the PDF symbol at the top of any online article to read, download, or print the article in PDF format.

Social Networking

To post a *CCJM* article to Facebook or Twitter, just click on the icon at the top of any online article.

www.ccjm.org

NOVEMBER 2015

TABLE OF CONTENTS

FROM THE EDITOR

To err is human, but... 714

Being wrong is part of being human, but I don't like it. To avoid being wrong, we might try keeping a checklist.

B.F. MANDELL

1-MINUTE CONSULT

Should all patients with significant proteinuria take a renin-angiotensin inhibitor? 716

Most of them should, with exceptions due to adverse effects such as angioedema, cough, and hyperkalemia.

G. THOMAS AND J.V. NALLY

THE CLINICAL PICTURE.....

Stellate ulceration in a nonuremic patient 719

Calciphylaxis is a poorly understood small-vessel vasculopathy most often associated with end-stage renal disease.

A. BRASILEIRO, R. RIBEIRO, P.E. SILVA, AND A. FIDALGO

THE CLINICAL PICTURE.....

The color purple 721

Purple urine bag syndrome is a sign of urinary tract infection and should be treated if symptomatic.

A. SOOD, A. ALI, AND A. BHIMRAJ

REVIEW

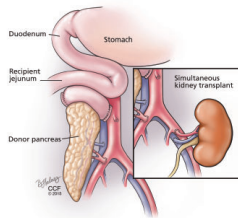
Noncosmetic uses of botulinum toxin in otolaryngology 729

It is used for spasmodic dysphonia, essential tremor of the voice, and dysphagia due to cricopharyngeal dysfunction.

M.S. BENNINGER AND L.J. SMITH

CONTINUED ON PAGE 712

REVIEW



Pancreas transplant for diabetes mellitus

738

Transplant consistently normalizes hemoglobin A_{1c} levels without the risk of severe hypoglycemia.

H.R. KERR, B. HATIPOGLU, AND V. KRISHNAMURTHI



REVIEW

An elderly woman with 'heart failure': Cognitive biases and diagnostic error

745

The authors review a case to analyze what went wrong and why.

N. MULL, J.B. REILLY, AND J.S. MYERS



REVIEW

Women's health 2015: An update for the internist

759

Antidepressants in pregnancy, nonhormonal therapies for menopausal symptoms, and heart failure therapy.

L.N. KRANSDORF, M.A. MCNEIL, J.A. FILES, AND M.R. JENKINS



REVIEW

Recreational cannabis use: Pleasures and pitfalls

765

The legalization of cannabis and its increased potency today are leading to complications hitherto unseen.

J.G. RELLA



REVIEW

Common infectious complications of liver transplant

773

The risk and the likely organisms vary with the patient's state of immunosuppression and the time after transplant.

L. CHELALA, C.S. KOVACS, A.J. TAEGER, AND I.A. HANOUNEH

DEPARTMENTS

CME Calendar

715

CME Test Directions

Inside back cover

Upcoming Features

- Advances in treating dyslipidemia
- Insulin pumps: Beyond basal-bolus
- Malpractice: A defense attorney's perspective
- Asymptomatic carotid stenosis: An individualized approach
- Alcohol withdrawal in medical patients
- When COPD and sleep apnea overlap
- Not all abdominal pain is gastrointestinal
- Autoimmune encephalitis: Not just paraneoplastic, not just limbic, not untreatable
- Serum IGE testing: How much is too much?



DEDICATED TO LIFELONG LEARNING

CLEVELAND CLINIC JOURNAL OF MEDICINE