

# TABLE OF CONTENTS

## FROM THE EDITOR .....

### **Reflux redux** 633

Even the diseases we deal with every day sometimes warrant a second look.

B.F. MANDELL

## THE CLINICAL PICTURE.....

### **Lady Windermere syndrome: Mycobacterium of sophistication** 641

The typical patient is a thin, well-mannered elderly woman who voluntarily suppresses her cough out of politeness.

C. DONATELLI AND A.C. MEHTA

## 1-MINUTE CONSULT .....

### **What can we offer patients with mild cognitive impairment?** 650

Physicians can promote healthy nutrition, physical activity, socialization, and mental activity, but no drug is approved for it.

T. HORR, J.A. PILLAI, AND B.J. MESSINGER-RAPPORT

## THE CLINICAL PICTURE.....

### **Upper-limb deep vein thrombosis in Paget-Schroetter syndrome** 658

A weight lifter with no medical history presented with pain and swelling in his left arm.

N. THIRUCHELVAM, F. MBUVAH, G. KISTANGARI, AND A.K.R. ANUMANDLA



## 1-MINUTE CONSULT .....

### **Are breast and pelvic exams necessary when prescribing hormonal contraception?** 661

Only a medical history and blood pressure measurement are needed before prescribing estrogen contraceptives.

P. BATUR AND A.B. BERENSON

## 1-MINUTE CONSULT/SMART TESTING .....

### **Do healthy patients need routine laboratory testing before elective noncardiac surgery?** 664

Testing often increases costs and anxiety, with little benefit.

N. HOUCHEMS

CONTINUED ON PAGE 631

# CLEVELAND CLINIC JOURNAL OF MEDICINE

## Online Features

### Access

*Cleveland Clinic Journal of Medicine* content is readily available to all and is free of charge at [www.ccjm.org](http://www.ccjm.org). On your first visit, we will ask you to take a few minutes to register, but subsequent visits will be unencumbered except for an occasional request for your e-mail address when you visit using another device (eg, mobile phone, tablet).

### Services

- Navigate quickly to articles in current and past issues via links on the home page and pull-down menus at the top of the page. Use the search function to find a specific article, or browse by topic or article type.
- Continuing medical education activities are accessible from article links and from a CME pull-down menu on the home page. Participation is free.
- Follow links on the home page to news, summaries of recent scientific meetings, and interactive quizzes.
- Click on the PDF symbol at the top of any online article to read, download, or print the article in PDF format.

### Social Networking

To post a *CCJM* article to Facebook or Twitter, just click on the icon at the top of any online article.

[www.ccjm.org](http://www.ccjm.org)

# Upcoming Features

- **Pancreas transplant for diabetes mellitus**
- **Cognitive bias: A cause of diagnostic error**
- **Recreational marijuana: Pleasures and pitfalls**
- **When COPD or asthma and sleep apnea overlap**
- **Recognizing, treating alcohol withdrawal syndrome**
- **Advances in treating dyslipidemia**
- **Insulin pumps: Beyond basal-bolus**
- **Asymptomatic carotid artery disease: A personalized approach**
- **Neurologic emergencies for the nonneurologist**



DEDICATED TO LIFELONG LEARNING  
CLEVELAND  
CLINIC  
JOURNAL OF  
MEDICINE

OCTOBER 2015

CONTINUED FROM PAGE 630

## EDITORIAL

### Why do clinicians continue to order 'routine preoperative tests' despite the evidence? 667

The authors propose several reasons and possible solutions.

A. BRATEANU AND M.B. ROTHBERG

## IM BOARD REVIEW

### A 56-year-old with diarrhea and weakness 671

The patient has unintentionally lost 137 lb over the past year. What is the cause?

M.E. MCCABE IV AND A.Y. KARA

## ADDRESSING DISPARITIES IN HEALTHCARE

### Genitourinary manifestations of sickle cell disease 679

Sickling can lead to nephropathy, priapism, papillary necrosis, and renal medullary carcinoma.

S. GEBRESELASSIE, M.N. SIMMONS, AND D.K. MONTAGUE

## REVIEW

### GERD: Diagnosing and treating the burn 685

If symptoms do not respond to a proton pump inhibitor or are atypical, testing may be needed.

M. ALZUBAIDI AND S. GABBARD

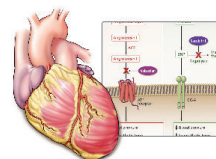


## INTERPRETING KEY TRIALS

### A new class of drugs for systolic heart failure: The PARADIGM-HF study 693

Valsartan-sacubitril is the first new drug in over a decade to decrease death rates in patients with systolic heart failure.

I.A. SABE, M.S. JACOB, AND D.O. TAYLOR



## EDITORIAL

### Sacubitril-valsartan and the evolution of heart failure care 702

It was hard to believe that any new additional therapy would make a significant difference.

R.C. STARLING

## DEPARTMENTS

### Letters to the Editor 638

Readers comment on resuming anticoagulation after hemorrhage (April 2015) and on starting insulin therapy in patients with type 2 diabetes (August 2015).

### CME Calendar 649

### CME Test Directions Inside back cover

CLEVELAND CLINIC JOURNAL OF MEDICINE VOLUME 82 • NUMBER 10 OCTOBER 2015

631