

Online Features

Access

Cleveland Clinic Journal of Medicine content is readily available to all and is free of charge at www.ccjm.org. On your first visit, we will ask you to take a few minutes to register, but subsequent visits will be unencumbered except for an occasional request for your e-mail address when you visit using another device (eg, mobile phone, tablet).

Services

- Navigate quickly to articles in current and past issues via links on the home page and pull-down menus at the top of the page. Use the search function to find a specific article, or browse by topic or article type.
- Continuing medical education activities are accessible from article links and from a CME pull-down menu on the home page. Participation is free.
- Follow links on the home page to news, summaries of recent scientific meetings, and interactive quizzes.
- Click on the PDF symbol at the top of any online article to read, download, or print the article in PDF format.

Social Networking

To post a *CCJM* article to Facebook or Twitter, just click on the icon at the top of any online article.

www.ccjm.org

JANUARY 2015

TABLE OF CONTENTS

FROM THE EDITOR

A new year and a new face for www.ccjm.org 9

CCJM.org has a new look and new interactive features, but it remains open to all and free of charge. Log on and register.

B.F. MANDELL

COMMENTARY

Short and sweet: Writing better consult notes in the era of the electronic medical record 13

Avoid repeating everything already in the record, but include your reasoning and teaching points.

K.K. VENKAT

THE CLINICAL PICTURE

Joint pain in a man with lung cancer 18

Hypertrophic pulmonary osteoarthropathy is characterized by proliferation of the skin and periosteal formation of new bone.

E. JERNIGAN, N. SIDDIQI, AND P. PEDDI

THE CLINICAL PICTURE

Retroperitoneal cyst hemorrhage in polycystic kidney disease 20

Polycystic kidney disease is relatively common, and fewer than half of cases are diagnosed. The cysts often bleed.

C.I. CHENG, N.B. KARVELAS, AND P. ARONOWITZ

1-MINUTE CONSULT

When should I discuss driving with my older patients? 22

Discuss driving safety with any patient who is age 80 or older, or who has a high-risk medical condition.

K. KONCILJA, B.J. MESSINGER-RAPPORT, AND Q. SYED

CONTINUED ON PAGE 8

CONTINUED FROM PAGE 7



REVIEW

Enterovirus D68: A clinically important respiratory enterovirus **26**

The fall of 2014 saw an outbreak of severe respiratory illness due to a virus of emerging importance.

C.B. FOSTER, N. FRIEDMAN, J. CARL, AND G. PIEDIMONTE



REVIEW

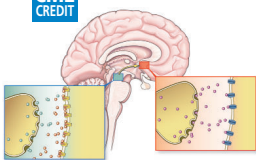
Rule out pulmonary tuberculosis: Clinical and radiographic clues for the internist **32**

A foreign-born college student presents with fatigue, weight loss, and a cough. Could it be tuberculosis?

C.A. CURLEY



REVIEW



Quitting smoking: Still a challenge, but newer tools show promise **39**

Most smokers want to quit, and many try to, but few succeed. They need support, cognitive-behavioral tools, and drug therapy.

G.B. COLLINS, J.M. JERRY, AND R. BALES



REVIEW

Selecting antithrombotic therapy for patients with atrial fibrillation **49**

In deciding whether to start anticoagulation, weigh the risks of both stroke and bleeding.

C. TANAKA-ESPOSITO AND M.K. CHUNG

DEPARTMENTS

Letter to the Editor **11**

A reader comments on whether insulin therapy increases the risk of cancer (October 2014).

CME Calendar **10**

Directions for taking CME tests online **64**

To receive AMA PRA Category 1 Credit™, read any or all of the CME-certified articles in this issue (those that carry the CME logo), then go to www.ccjm.org to take the test for the article or articles you select. It should take up to 1 hour to complete the activity for each article.

Release date: January 1, 2015

Expiration date: December 31, 2015

Upcoming Features

- Is aspirin still indicated for primary prevention?
- Cystic lung disease: Systematic diagnosis
- Denosumab: A newer osteoporosis drug
- The genetics of hepatitis C
- Treating triglycerides: Worth the effort?
- Should renal artery stenosis be stented?
- Managing aneurysmal subarachnoid hemorrhage
- Managing medications during transitions of care



DEDICATED TO LIFELONG LEARNING
CLEVELAND
CLINIC
JOURNAL OF
MEDICINE