

# TABLE OF CONTENTS

## FROM THE EDITOR .....

### **Polycystic kidney disease: 516** **Molecular understanding dictating management**

It was the early 1980s, I was a resident in the emergency room, and the patient had fever, flank pain, hypotension, and a normal urinalysis.

B.F. MANDELL

## THE CLINICAL PICTURE.....

### **Hypertrophic cardiomyopathy apical variant 517**

When a professional soccer player required ankle surgery, his electrocardiogram showed several abnormalities.

A.M.-H. HO, P.T. CHUI, A.P. W. LEE, AND S. WAN

## THE CLINICAL PICTURE.....

### **'Allergic to the sun' 520**

A homeless man presents with burning pain and lesions in his arm for the past 2 to 3 days.

N.M. RAJAN AND C.L. ELLIS

## THE CLINICAL PICTURE.....

### **Erythema and atrophy on the tongue 523**

Oral abnormalities can result from nutritional deficiencies and a host of other conditions.

E. GÓMEZ-MOYANO, L.M. PÉREZ-BELMONTE, L. MARTÍNEZ-PILAR, AND D.J. GODOY-DÍAZ

## 1-MINUTE CONSULT .....

### **Can we reduce the risk of readmission 525** **for a patient with an exacerbation of COPD?**

The risk can be reduced by using a checklist before discharge and by implementing outpatient programs that continue patient education and provide rapid access to medical support if needed.

M.B. AYACHE, S. BOYAJI, AND J.C. PILE

## COMMENTARY.....

### **To improve our patients' health, 528** **look beyond reducing readmissions**

Focusing on the readmission rate diverts attention from more proactive ways to improve safety, quality, and value.

A.J. WARMUTH AND S.C. PHILLIPS

CONTINUED ON PAGE 515

# CLEVELAND CLINIC JOURNAL OF MEDICINE

## Online Features

### Free e-mail alerts

To receive your free e-mail Table of Contents (eTOC) when a new issue of the *Cleveland Clinic Journal of Medicine* is released, just click on "Alerts" from any page at [www.ccjm.org](http://www.ccjm.org).

It is quick and easy. All you need is your e-mail address. No other registration information is required.

### Social Networking

To post a *CCJM* article to Facebook or your favorite social networking site, just click on the icon at the bottom of any online article.



# Upcoming Features

- New oral anticoagulants: Perioperative management
- Why study cardiovascular outcomes in type 2 diabetes?
- Managing snoring: When to consider surgery
- Testosterone replacement: The knowns and unknowns
- Do all patients need an ECG before noncardiac surgery?
- IL28B polymorphisms and hepatitis C treatment
- Caring for women with HIV
- Help your patients quit smoking
- Screening tests: What's recommended? What's controversial?



DEDICATED TO LIFELONG LEARNING

CLEVELAND  
CLINIC  
JOURNAL OF  
MEDICINE

SEPTEMBER 2014

CONTINUED FROM PAGE 514

REVIEW ..... CME CREDIT

## Hand, foot, and mouth disease: Identifying and managing an acute viral syndrome 537

This is typically a benign childhood infection—except when it isn't so benign or when it occurs in an adult.

G.L. REPASS, W.C. PALMER, AND F.F. STANCAMPIANO

MEDICAL GRAND ROUNDS ..... CME CREDIT

## Advances in autosomal dominant polycystic kidney disease—2014 and beyond 545

An overview of its pathogenesis, diagnosis, management, complications, and future possible treatment.

W.E. BRAUN

REVIEW ..... CME CREDIT

## The protein-sparing modified fast for obese patients with type 2 diabetes: What to expect 557

Committed patients can lose weight and control their diabetes, but they need encouragement and close supervision.

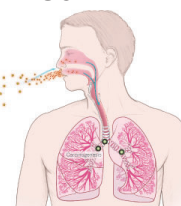
J. CHANG AND S.R. KASHYAP

REVIEW ..... CME CREDIT

## Radon and lung cancer: Assessing and mitigating the risk 567

Radon exposure is the second most common cause of lung cancer, but the evidence so far does not support screening for lung cancer in people exposed to it.

H. CHOI AND P. MAZZONE



DEPARTMENTS .....

CME Calendar 544

Letters to the editor 576

A reader comments on stress testing in asymptomatic patients at low risk (July 2014).

Directions for CME Inside back cover

To receive CME credit, read any or all of the CME-certified articles in this issue (those that carry the CME logo), then go to [www.ccm.org](http://www.ccm.org) to take the test for the article or articles you select. It should take up to 1 hour to complete the activity for each article.

Release date: September 1, 2014

Expiration date: August 31, 2015