

# TABLE OF CONTENTS

## FROM THE EDITOR .....

### When people with diabetes go to surgery 682

A key take-home point is that severely insulinopenic patients require some exogenous basal insulin, even when not eating.

B.F. MANDELL

## CURRENT DRUG THERAPY .....

### Canagliflozin: Improving diabetes by making urine sweet 683

Canagliflozin is the first of a new class of diabetes drugs that lower glucose by increasing its urinary excretion. An overview of its mechanism, uses, risks, and benefits.

M. VOUYIOUKLIS

## THE CLINICAL PICTURE.....

### Dyspnea after treatment of recurrent urinary tract infection 690

Glucose-6 phosphate dehydrogenase deficiency is an X-linked disorder that can present as hemolytic anemia after infection or exposure to certain medications.

K.B. GHIMIRE AND B. NEPAL

## THE CLINICAL PICTURE.....

### A 66-year-old woman with an enlarged tongue 696

Eventually, she was diagnosed with multiple myeloma and cardiac amyloidosis.

J.A. BRENES-SALAZAR, M. GROGAN, AND M.Q. LACY



## 1-MINUTE CONSULT .....

### How should we manage insulin therapy before surgery? 702

Continuing at least part of the basal insulin is reasonable, but prandial insulin should be stopped the morning of surgery.

G.A. DOBRI AND M.C. LANSANG

CONTINUED ON PAGE 677

# CLEVELAND CLINIC JOURNAL OF MEDICINE

## Online Features

### Free e-mail alerts

To receive your free e-mail Table of Contents (eTOC) when a new issue of the *Cleveland Clinic Journal of Medicine* is released, just click on "Alerts" from any page at [www.ccm.org](http://www.ccm.org).

It is quick and easy. All you need is your e-mail address. No other registration information is required.

### Social Networking

To post a *CCJM* article to Facebook or your favorite social networking site, just click on the icon at the bottom of any online article.



# UPCOMING FEATURES

- **Dense breasts:**  
What do we tell patients?
- **Anti-TNF drugs:**  
Managing the risks
- **Medical consequences**  
of eating disorders
- **Can we give ARBs to those**  
who had angioedema  
on ACE inhibitors?
- **Antiplatelet therapy**  
after stroke:  
Three good options
- **Albuminuria:**  
Risk of kidney disease  
and heart disease
- **How to spot heritable**  
breast cancer syndromes



DEDICATED TO LIFELONG LEARNING  
**CLEVELAND  
CLINIC  
JOURNAL OF  
MEDICINE**

NOVEMBER 2013

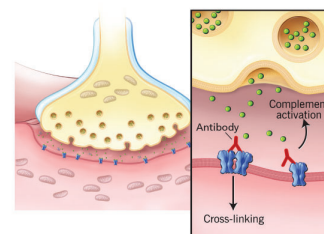
CONTINUED FROM PAGE 676

## REVIEW

### **Myasthenia gravis: Newer therapies offer sustained improvement**

The prognosis has dramatically improved; the death rate used to be 75%, now it is 4.5%.

Y. LI, Y. ARORA, AND K. LEVIN



711



## REVIEW

### **Sleep disturbances in cancer patients: Underrecognized and undertreated**

In cancer patients, sleep disturbances are a treatable problem that profoundly affect all aspects of quality of life.

S. DAHIYA, M.S. AHLUWALIA, AND H.K. WALIA

722



## DEPARTMENTS

### **CME Calendar**

705

### **Letters to the Editor**

733

Readers comment on the risk of bleeding with the new oral anticoagulants (July 2013) and on the signs of rheumatoid arthritis (May 2013).

### **Correction**

721

An error appeared in Paget disease of bone: Diagnosis and drug therapy. *Cleve Clin J Med* 2013; 80:452-462.

### **Directions for taking CME tests online**

735

To receive CME credit, read any or all of the CME-certified articles in this issue (those that carry the CME logo), then go to [www.ccm.org](http://www.ccm.org) to take the test for the article or articles you select. It should take up to 1 hour to complete the activity for each article.

Release date: November 1, 2013

Expiration date: October 31, 2014