

TABLE OF CONTENTS

FROM THE EDITOR

Lung cancer screening: One step forward 306

I never expected, perhaps naively, that cancer screening would be so challenging and contentious.

B.F. MANDELL

THE CLINICAL PICTURE.....

Hyperpigmentation and hypotension 308

A 65-year-old man presents after 2 months of weakness, dizziness, and blurred vision. What test should be ordered?

K. SHAHEEN, A.H. ALRAIYES, M. BAIBARS, AND M.C. ALRAIES



ADDRESSING DISPARITIES IN HEALTH CARE

Disparities in prostate cancer 313

in African American men:

What primary care physicians can do

Both biologic and socioeconomic factors may be to blame. Better screening may help to close the gap.

I. WU AND C.S. MODLIN

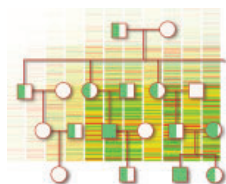
NEW SERIES

Personalizing patient care 329

Personalized health care has been anticipated for decades. Yet in its breadth and in the way we would like it to be practiced, it is still in its infancy.

K.A. TENG AND C. ENG

PERSONALIZING PATIENT CARE.....



Family history: 331

Still relevant in the genomics era

Family history is still relevant, being a proxy for genetic, environmental, and behavioral risks to health.

M. DOERR AND K. TENG



CANCER DIAGNOSIS AND MANAGEMENT

The rationale for, and design of, 337

a lung cancer screening program

We are entering a new era in which lung cancer screening may be considered the standard of care.

P. MAZZONE, FOR THE CHEST CANCER CENTER AT CLEVELAND CLINIC

PATIENT EDUCATION

Lung cancer screening: What to expect 346

CONTINUED ON PAGE 302

CLEVELAND CLINIC JOURNAL OF MEDICINE

Online Features

Free e-mail alerts

To receive your free e-mail Table of Contents (eTOC) when a new issue of the *Cleveland Clinic Journal of Medicine* is released, just click on "Alerts" from any page at www.ccjm.org.

It is quick and easy. All you need is your e-mail address. No other registration information is required.

Social Networking

To post a *CCJM* article to Facebook or your favorite social networking site, just click on the icon at the bottom of any online article.



CONTINUED FROM PAGE 300



MEDICAL GRAND ROUNDS.....

**Geriatrics update 2012:
What parts of our practice to change,
what to 'think about'** 347

News about hypertension, preventing falls, calcium and vitamin D supplementation, osteoporosis treatment, depression, Alzheimer disease, and aortic valve stenosis.

B.J. MESSINGER-RAPPORT

THE CLINICAL PICTURE.....

Painful red hands and feet 356

The symptoms are worse during heat exposure and physical effort. What is the diagnosis?

S.K. GHOSH, D. BANDYOPADHYAY, AND L. GHOSHAL

REVIEW

**A geriatric patient-centered medical home:
How to obtain NCQA certification** 359

Applying for certification is hard work but, if accompanied by real changes to your practice, should improve the care you deliver.

A. GENNARI, K. FEDOR, E. BAKOW, AND N.M. RESNICK

DEPARTMENTS

Correction 312

An error appeared in "Advances in the management of PML: focus on natalizumab" (Fox R. Cleve Clin J Med 2011; 78[suppl 2]:S33-S37).

CME Calendar 321

Directions for taking CME tests online 367

To receive CME credit, read any or all of the CME-certified articles in this issue (those that carry the CME logo), then go to www.ccm.org to take the test for the article or articles you select. It should take up to 1 hour to complete the activity for each article.

Release date: May 1, 2012

Expiration date: April 30, 2013

UPCOMING FEATURES

- **UV protection:**
What to tell patients
- **Recognizing, treating**
the spectrum of psoriasis
- **Acute community-acquired**
bacterial meningitis in adults
- **Renal denervation:**
What role in treating
hypertension?
- **Dengue fever:**
A reemerging concern
among travelers
- **Heart failure:**
Can LVADs fill
the transplant gap?
- **Chronic kidney disease**
in African Americans:
Earlier onset, faster course
- **Genetic counselors:**
Our partners in
personalized care



DEDICATED TO LIFELONG LEARNING

CLEVELAND
CLINIC
JOURNAL OF
MEDICINE