

TABLE OF CONTENTS

FROM THE EDITOR

Autism in the office 819

To many, the image of autism is of a cute sandy-haired boy reciting the batting averages of baseball players. But the spectrum of autism is wide.

B.F. MANDELL

ADDRESSING DISPARITIES IN HEALTH CARE

Lupus in Hispanics: A matter of serious concern 824

Some diseases are either more serious or more frequent in US Hispanics, and lupus is one of them. Prompt diagnosis is of paramount importance to prevent organ damage and death.

G.J. PONS-ESTEL AND G.S. ALARCÓN

THE CLINICAL PICTURE

Bilateral adrenal masses 841

In a woman with a thrombus in the aorta, imaging reveals bilateral high-density adrenal masses. What is the diagnosis?

S. SABERI AND N.H. ESFANDIARI

EDITORIAL

Mild cognitive impairment: Challenges in research and in practice 853

Mild cognitive impairment is now a clinical reality seen by all practitioners dealing with older patients.

H.R. OKHRAVI AND R.M. PALMER



REVIEW

Mild cognitive impairment: Hope for stability, plan for progression 857

Older patients often raise concerns about cognitive issues with their primary care physicians. This mild impairment may progress to dementia, remain stable, or even improve.

B.B. PATEL AND N.W. HOLLAND

CONTINUED ON PAGE 814

CLEVELAND CLINIC JOURNAL OF MEDICINE

Online Features

Free e-mail alerts

To receive your free e-mail Table of Contents (eTOC) when a new issue of the *Cleveland Clinic Journal of Medicine* is released, just click on "Alerts" from any page at www.ccm.org.

It is quick and easy. All you need is your e-mail address. No other registration information is required.

Social Networking

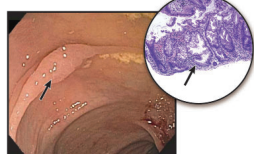
To post a *CCJM* article to Facebook or your favorite social networking site, just click on the icon at the bottom of any online article.



CONTINUED FROM PAGE 812



REVIEW



Sessile serrated polyps: Cancer risk and appropriate surveillance 865

The serrated polyp pathway is different than the pathway for conventional adenomas. What does finding these polyps on colonoscopy mean for patient care?

R. MAKKAR, R.K. PAI, AND C.A. BURKE

EDITORIAL

Appreciating Asperger syndrome: Implications for better care and outcomes 872

The behavior of an Einstein, Ford, Edison, or Beethoven might lead to a diagnosis of Asperger syndrome today.

H.C. SHANE



REVIEW

Is an adult with Asperger syndrome sitting in your waiting room? 875

The authors offer guidance on interacting with adult patients who have this disorder. They also address proposed diagnostic changes scheduled to take effect in 2013.

B. PRAYSON AND K. FRANCO



REVIEW

Statins and diabetes risk: Fact, fiction, and clinical implications 883

The benefit of preventing serious cardiovascular events using statins seems to outweigh the higher risks of diabetes and poorer glycemic control.

M.B. ROCCO

DEPARTMENTS

CME Calendar 818

Directions for taking CME tests online 894

To receive CME credit, read any or all of the CME-certified articles in this issue (those that carry the CME logo), then go to www.ccjm.org to take the test for the article or articles you select. It should take up to 1 hour to complete the activity for each article.

Release date: December 1, 2012

Expiration date: November 30, 2013

UPCOMING FEATURES

- **HPV vaccine:**
Safe, effective, underused
- **Fecal transplant to treat *Clostridium difficile***
- **New osteoarthritis guidelines:**
Not a cookbook
- **Resistant hypertension:**
Management strategies
- **Diabetes and the kidney 2013**
- **Short QT syndrome:**
A new cause of sudden death
- **Frailty in older adults:**
Implications for end-of-life care
- **Preserving fertility**
in women who have cancer



DEDICATED TO LIFELONG LEARNING
**CLEVELAND
CLINIC
JOURNAL OF
MEDICINE**