

# TABLE OF CONTENTS

## FROM THE EDITOR .....

### Home testing: **The metamorphosis of attitudes about HIV infection** 669

Most of us have not spent the past 25 years on the front line against the AIDS epidemic, but we all have been touched by it.

B.F. MANDELL

## THE CLINICAL PICTURE.....

### V<sub>1</sub>: The most important lead in inferior STEMI 682

A 63-year-old woman with diabetes and hypertension developed chest tightness. Her electrocardiogram showed ST-segment elevation in leads II, III, aVF, V<sub>1</sub>, and V<sub>2</sub>.

V. NAGARAJAN AND D.A. UNDERWOOD

## THE CLINICAL PICTURE.....

### A 60-year-old man with abdominal bruising 688

A man with liver cancer developed abdominal ecchymoses resembling the Cullen sign and flank ecchymoses resembling the Grey Turner sign.

D. DALAL AND S.E. MACE

## IM BOARD REVIEW.....

### Chronic lymphocytic leukemia and apparent hyperkalemia 690

The day after chemotherapy, the patient's plasma potassium level was 7.7 mmol/L and the next day it rose to 10.9, but he had no signs or symptoms of hyperkalemia. What was the cause?

A. GEORGE, O. PANDEY, AND A. MORENO

## REVIEW .....

### Hypertension in the elderly: Some practical considerations 694

Treatment is challenging because of comorbidities and age-related changes. Some common scenarios are presented.

K.N. CHAUDHRY, P. CHAVEZ, J. GASOWSKI, T. GRODZICKI, AND F.H. MESSERLI

CONTINUED ON PAGE 670

# CLEVELAND CLINIC JOURNAL OF MEDICINE

## Online Features

### Free e-mail alerts

To receive your free e-mail Table of Contents (eTOC) when a new issue of the *Cleveland Clinic Journal of Medicine* is released, just click on "Alerts" from any page at [www.ccm.org](http://www.ccm.org).

It is quick and easy. All you need is your e-mail address. No other registration information is required.

### Social Networking

To post a *CCJM* article to Facebook or your favorite social networking site, just click on the icon at the bottom of any online article.



CONTINUED FROM PAGE 668



## REVIEW

**Cognitive impairment in ICU survivors: Assessment and therapy** 705

Cognitive impairment occurs in up to one-third of patients after a stay in the intensive care unit. Prevention is the prevailing strategy, since data on treatment are scarce.

R. WERGIN AND A. MODRYKAMIEN



## REVIEW

**Home testing for HIV: Hopefully, a step forward** 713

An over-the-counter at-home test has been approved. Will it lower the number of infected people unaware of their infection?

C.E. KOVAL

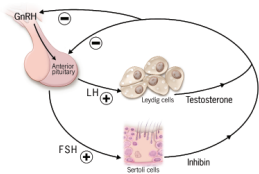


## REVIEW

**Male hypogonadism: More than just a low testosterone** 717

Confronted with a low serum testosterone level, physicians should not jump to the diagnosis of hypogonadism. Confirmation and thorough evaluation are warranted.

K.M. PANTALONE AND C. FAIMAN



## ADDRESSING DISPARITIES IN HEALTH CARE

**Hypertensive chronic kidney disease in African Americans: Strategies for improving care** 726

Factors responsible for its rapid progression in African Americans are detectable by screening and modifiable with prompt therapy.

D. MARTINS, L. AGODOA, AND K.C. NORRIS

## DEPARTMENTS

**CME Calendar** 681

**Directions for taking CME tests online** 735

To receive CME credit, read any or all of the CME-certified articles in this issue (those that carry the CME logo), then go to [www.ccjm.org](http://www.ccjm.org) to take the test for the article or articles you select. It should take up to 1 hour to complete the activity for each article. Release date: October 1, 2012. Expiration date: September 30, 2013

# UPCOMING FEATURES

- **Statins and diabetes risk: Fact, fiction, and clinical implications**
- **Testosterone replacement: Indications and pitfalls**
- **Mild cognitive impairment: Hope for stability, plan for progression**
- **The adult Asperger patient in your waiting room**
- **Emergency contraception: Clarifying the myths**
- **Hereditary colorectal cancer: Recognizing and managing these syndromes in your practice**
- **Diabetes and the kidney 2012**

