

Online Features

Let us alert you to timely articles that appear in *Cleveland Clinic Journal of Medicine*

eTOCs is a free service that provides the Table of Contents or a notification of availability when new issues of *Cleveland Clinic Journal of Medicine* are published online

Sign up for *Cleveland Clinic Journal of Medicine* eTOCs (electronic Table of Contents)

To sign up, go to www.ccjm.org and click on "E-MAIL ALERTS (FREE)"



OCTOBER 2011

TABLE OF CONTENTS

FROM THE EDITOR

A discussion of dissection 644

Few medical emergencies are as dramatic as an acutely rupturing aortic aneurysm. Advances in research offer potential for more alternatives to emergency surgery.

B.F. MANDELL

THE CLINICAL PICTURE.....

Necrotic skin lesions after hemodialysis 646

A 44-year-old woman with end-stage liver disease presents with a painful, ischemic, necrotic lesion on her thigh. What is the diagnosis?

C.R. NEWEY, A. SARWAL, J. UCHIN, AND G. MULLIGAN

1-MINUTE CONSULT

What is the best questionnaire to screen for alcohol use disorder in an office practice? 649

A variety of questionnaires can be used. The important thing is to be proactive about screening for this very common yet underrecognized problem.

K. FAGBEMI

CURRENT DRUG THERAPY

Dabigatran: Will it change clinical practice? 657



This new oral anticoagulant has advantages over warfarin (Coumadin), but it is more expensive, which may pose a barrier to its wider use.

S.A. WARTAK AND J.R. BARTHOLOMEW

REVIEW.....

Update in intensive care medicine: Studies that challenged our practice in the last 5 years 665



Several once-established therapies have failed the test of time, as the result of evidence from clinical trials.

E. DIAZ-GUZMAN, J. SANCHEZ, AND A.C. ARROLIGA

CONTINUED ON PAGE 640

CONTINUED FROM PAGE 637



REVIEW

**Jet lag and shift work sleep disorders:
How to help reset the internal clock** 675

Some relief is possible for the grogginess and disorientation that often ensue from travelling long distances or working the night shift.

B.P. KOLLA AND R.R. AUGER

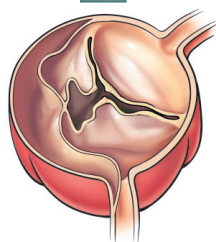


REVIEW

**Aortic dissection: Prompt diagnosis
and emergency treatment are critical** 685

Aortic dissection can be rapidly fatal, and it can mimic more common conditions. Suspicion is essential.

A.C. BRAVERMAN



COMMENTARY

**A new ICU paradigm:
Intensivists as primary critical care physicians** 697

The time has come for critical care medicine to end its identity crisis.

M.J. POPOVICH, S. ESFANDIARI, AND A. BOUTROS

DEPARTMENTS

CME Calendar 656

Directions for taking CME tests online 702

To receive CME credit, read any or all of the CME-certified articles in this issue (those that carry the CME logo), then go to www.ccjm.org to take the test for the article or articles you select. It should take up to 1 hour to complete the activity for each article.

Release date: October 1, 2011

Expiration date: September 30, 2012

UPCOMING FEATURES

- Nocturia in the elderly:
A wake-up call
- Steroid-induced diabetes
and adrenal suppression:
How to detect and manage
- Essential tremor:
Choosing the right treatment
- A decade of progress
in lupus nephritis
- Papillomavirus testing:
Improving on the success
of the Pap test
- Recognizing and, addressing
racial disparities in health
care
- Bio-identical hormones:
Clarifying misconceptions
- Skin and soft-tissue infections:
Classifying and treating
a spectrum



DEDICATED TO LIFELONG LEARNING
CLEVELAND
CLINIC
JOURNAL OF
MEDICINE