

## TABLE OF CONTENTS

## FROM THE EDITOR

**Evidence, limes, and cement**

7

Sometimes, the results of clinical trials do not immediately affect what physicians do because the results do not jibe with experience.

B.F. MANDELL

## COMMENTARIES

**Vertebroplasty, cognitive dissonance, and evidence-based medicine: What do we do when the 'evidence' says we are wrong?**

8

Two recent trials call into question the efficacy of vertebroplasty for treating osteoporotic vertebral compression fractures and are leading many of us to question our assumptions about vertebroplasty.

R.D. ORR

**Consternation and questions about two vertebroplasty trials**

12

Should we abandon this popular procedure? Or are there considerations that may mitigate the negative findings of these two trials?

M.B. BOLSTER



## CURRENT DRUG THERAPY

**Acetaminophen: Old drug, new warnings**

19

Often, patients overdose because they take more than one acetaminophen product and are unaware that both products contain the drug.

A. SCHILLING, R. COREY, M. LEONARD, AND B. EGHTESSAD

## THE CLINICAL PICTURE

**Lesions on the hands, high aminotransferase levels**

34

A 64-year-old man presents with a 10-day history of painful vesicles and erosions on the dorsa of the hands that appeared after sun exposure. What is the diagnosis?

M. GIL-MOSQUERA, S. VAÑO-GALVÁN, R. GOMEZ-GUERRA, P. JAÉN, AND M. GIL-MOSQUERA

CONTINUED ON PAGE 3

# CLEVELAND CLINIC JOURNAL OF MEDICINE

## EDITORIAL STAFF

BRIAN F. MANDELL, MD, PhD *Editor-in-Chief*  
TIMOTHY GILLIGAN, MD, MS *Deputy Editor*  
PHILLIP E. CANUTO *Executive Editor*  
RAY BORAZANIAN *Managing Editor*  
DAVID A. HUDDLESTON *Manuscript Editor*  
JOSEPH A. PANGRACE *Medical Art Director*  
AMY SLUGG MOORE *Patient Education Editor*

## PUBLISHING OPERATIONS

PETER G. STUDER *Executive Publisher*  
KRISTI THOMSEN *Exec. Editor, Special Assignments*  
BRUCE M. MARICH *Production Manager*  
IRIS TRIVILINO *Department Coordinator*  
LAURIE WEISS *Accountant (Billing)*

## CUSTOM PROGRAMS

GLENN R. CAMPBELL *Executive Editor*  
KATHY DUNASKY *Production Manager*

## ASSOCIATE EDITORS

ALEJANDRO C. ARROLIGA, MD  
ARMAN T. ASKARI, MD  
DANIEL J. BROTMAN, MD  
WILLIAM D. CAREY, MD  
JERIMIAH P. DEPTA, MD  
RUTH M. FARRELL, MD, MA  
GARY FRANCIS, MD  
KATHLEEN FRANCO-BRONSON, MD  
STEVEN M. GORDON, MD  
BRIAN GRIFFIN, MD  
AMIR JAFFER, MD  
MANDY C. LEONARD, PharmD  
ANGELO A. LICATA, MD, PhD  
ATUL C. MEHTA, MD  
FRANKLIN A. MICHOTA, MD  
CHRISTIAN NASR, MD  
ROBERT M. PALMER, MD  
JOSHUA D. PENFIELD, MD  
DAVID D. K. ROLSTON, MD  
BERNARD J. SILVER, MD  
TYLER STEVENS, MD

THEODORE SUH, MD, PhD, MHSc  
ALEXANDRA VILLA-FORTE, MD, MPH  
DONALD G. VIDT, MD  
WILLIAM S. WILKE, MD  
MARC WILLIAMS, MD

## EDITORS EMERITI

JOHN D. CLOUGH, MD  
HERBERT P. WIEDEMANN, MD  
JAMES S. TAYLOR, MD

## CLEVELAND CLINIC

DELOS M. COSGROVE, MD  
*President and Chief Executive Officer*

## CLEVELAND CLINIC

EDUCATION INSTITUTE  
JAMES K. STOLLER, MD, MS  
*Chairman*  
PHILLIP R. GARD  
*Administrator*

## REPRINTS: Hope Robinson, Sheridan Content Services

800-635-7181 ext. 8065; E-mail hrobinson@tsp.sheridan.com

*Cleveland Clinic Journal of Medicine* [ISSN 0891-1150 (print), ISSN 1939-2869 (online)] is published monthly by Cleveland Clinic from editorial offices at 9500 Euclid Avenue, NA32, Cleveland, OH 44195-0001. POSTMASTER: Send address changes to the *Cleveland Clinic Journal of Medicine*, 9500 Euclid Avenue, NA32, Cleveland, OH 44195-0001.

STATEMENTS AND OPINIONS expressed in the *Cleveland Clinic Journal of Medicine* are those of the authors and not necessarily of Cleveland Clinic or its Board of Trustees.

SUBSCRIPTION RATES: U.S. and possessions: personal \$115; institutional \$143; single copy/back issue \$20. Foreign: \$160; single copy/back issue \$20. Institutional (multiple-reader rate) applies to libraries, schools, hospitals, and federal, commercial, and private institutions and organizations. Individual subscriptions must be in the names of, billed to, and paid by individuals.

SUBSCRIPTIONS, EDITORIAL, BILLING/ACCOUNTING, AND PRODUCTION: (same address as above) • Phone (216) 444-2661 • Fax (216) 444-9385 • E-mail ccjm@ccf.org • Web site www.ccjm.org

ADVERTISING: Joseph Dennehy, Director, Sales and Marketing, 120 Castle Ridge Rd, Manhasset, NY 11030 • Phone (516) 365-8640 • Fax (516) 365-0587 • E-mail joedennehy@verizon.net

AUTHORIZATION TO PHOTOCOPY items for internal or personal use is granted by the *Cleveland Clinic Journal of Medicine* [ISSN 0891-1150 (print), ISSN 1939-2869 (online)], published by Cleveland Clinic, provided that the appropriate fee is paid directly to Copyright Clearance Center, 222 Rosewood Drive, Danvers, MA 01923 USA 978-750-8400. Prior to photocopying items for educational classroom use, please contact Copyright Clearance Center, Inc., at the address above. For permission to reprint material, please fax your request with complete information to the Reproduction department at CCC, fax (978) 750-4470. For further information visit CCC online at www.copyright.com. To order bulk reprints, see above.

DISCLAIMER: The information in this educational activity is provided for general medical education purposes only and is not meant to substitute for the independent medical judgment of a physician relative to diagnostic and treatment options of a specific patient's medical condition. The viewpoints expressed in this CME activity are those of the authors. They do not represent an endorsement by The Cleveland Clinic Foundation. In no event will The Cleveland Clinic Foundation be liable for any decision made or action taken in reliance upon the information provided through this CME activity.

COPYRIGHT © 2010 THE CLEVELAND CLINIC FOUNDATION. ALL RIGHTS RESERVED. PRINTED IN U.S.A.

AMM



# UPCOMING FEATURES

- **Stenting atherosclerotic renal arteries:  
Time to be less aggressive**
- **How to evaluate asymptomatic liver function test elevations**
- **What evidence for VTE prophylaxis in long-term care?**
- **Treating silent GERD does not improve asthma symptoms**
- **Treating, preventing acute upper GI bleeding**
- **Bon voyage: Lessening the health risks of travel**
- **The JUPITER trial: Should we give statins to prevent venous thromboembolism?**



DEDICATED TO LIFELONG LEARNING  
**CLEVELAND CLINIC JOURNAL OF MEDICINE**

**JANUARY 2010**

CONTINUED FROM PAGE 2

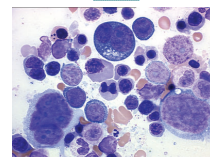
## REVIEW .....

### **Myelodysplastic syndromes: A practical approach to diagnosis and treatment** **37**

The myelodysplastic syndromes are clonal bone marrow disorders that lead to underproduction of normal blood cells. Primary care physicians tend to be the first to identify the problem.

A. BARZI AND M.A. SEKERES

CME  
CREDIT



## IM BOARD REVIEW.....

### **Abdominal pain in a 20-year-old woman** **45**

Her body mass index is 18.7, and she has lost 20 lb despite a good appetite. What is the cause?

L.S. PASUMARTHY, D.E. AHLBRANDT, AND J.W. SROUR

CME  
CREDIT

## REVIEW .....

### **Food allergy and eosinophilic esophagitis: Learning what to avoid** **51**

What we know about the mechanisms of food allergies and eosinophilic esophagitis, how to diagnose them, and how to treat them.

S. HONG AND N.M. VOGEL

CME  
CREDIT

## 1-MINUTE CONSULT .....

### **Should we routinely screen for hypercapnea in sleep apnea patients before elective noncardiac surgery?** **60**

Yes. Obesity hypoventilation syndrome is often undiagnosed and greatly increases perioperative risk.

B. MOKHLESI, L. SAAGER, AND R. KAW

## DEPARTMENTS .....

### **CME calendar** **62**

### **About our CME self-test online** **63**

To receive CME credit, read the selected articles in this issue and then go online to take the test. It should take about 1 hour and 30 minutes to complete this activity. Release date: January 1, 2010. Expiration date: December 31, 2010