

TABLE OF CONTENTS

FROM THE EDITOR.....

**A new series, an old concept,
continued value** 257

This month we introduce a new series, The Physical Examination, kicked off by a paper on evaluating pleural effusions. We encourage you to submit your suggestions for topics.

B. F. MANDELL

REVIEW.....

**Diffuse alveolar hemorrhage:
Diagnosing it and finding the cause** 258

Diffuse alveolar hemorrhage can complicate a large number of clinical conditions. It may present in different ways and may be life-threatening, and it poses an important challenge for the clinician.

O.C. IOACHIMESCU AND J.K. STOLLER

IM BOARD REVIEW.....

**A 61-year-old with bipolar disorder
and cognitive impairment:
Dementia or polypharmacy?** 284

He reports poor concentration, using wrong words, forgetting names, and sleepiness. What is the cause?

M. BHATNAGAR AND R. PALMER

INTERPRETING KEY TRIALS.....

**Interpreting the CHARISMA study.
What is the role of dual antiplatelet therapy
with clopidogrel and aspirin?** 289

In patients at risk of myocardial infarction or stroke, two antiplatelet drugs are not always better than one.

M.R. BAKHRU AND D.L. BHATT

THE PHYSICAL EXAMINATION.....

**Accuracy of the physical
examination in evaluating
pleural effusion** 297

A careful physical examination is a valuable and noninvasive means of assessing pleural effusions and should be routinely performed in every patient in whom this condition is suspected.

E. DIAZ-GUZMAN AND M.M. BUDEV

CONTINUED ON PAGE 254

CLEVELAND
CLINIC
JOURNAL OF
MEDICINE

EDITORIAL STAFF

BRIAN F. MANDELL, MD, PhD Editor-in-Chief
DAVID D. K. ROLSTON, MD Deputy Editor
PHILLIP E. CANUTO Executive Editor
RAY BORAZANIAN Managing Editor
DAVID A. HUDDLESTON Manuscript Editor
JOSEPH A. PANGRACE Medical Art Director
AMY SLUGG MOORE Patient Education Editor

PUBLISHING OPERATIONS

PETER G. STUDER Executive Publisher
BRUCE M. MARICH Production Manager
IRIS TRIVILINO Department Coordinator
LAURIE WEISS Billing/Accounting

CUSTOM PROGRAMS

GLENN R. CAMPBELL Executive Editor
KATHY DUNASKY Production Manager

ASSOCIATE EDITORS

DREW ALLEN, DO
ALEJANDRO C. ARROLIGA, MD
ARMAN T. ASKARI, MD
MIHIR R. BAKHRU, MD
DAVID BRONSON, MD
DANIEL J. BROTMAN, MD
WILLIAM D. CAREY, MD
RUTH M. FARRELL, MD, MA
GARY FRANCIS, MD
KATHLEEN FRANCO-BRONSON, MD
STEVEN M. GORDON, MD
BRIAN GRIFFIN, MD
GARY HOFFMAN, MD
BYRON J. HOOGWERF, MD
AMIR JAFFER, MD
DERK W. KRIEGER, MD
MANDY C. LEONARD, PharmD
ANGELO A. LICATA, MD, PhD
ATUL C. MEHTA, MD
FRANKLIN A. MICHOTA, MD

ROBERT M. PALMER, MD
BERNARD J. SILVER, MD
DONALD G. VIDT, MD
WILLIAM S. WILKE, MD
MARC WILLIAMS, MD

EDITORS EMERITI

JOHN D. CLOUGH, MD
HERBERT P. WIEDEMANN, MD
JAMES S. TAYLOR, MD

CLEVELAND CLINIC

DELOS M. COSGROVE, MD
President and Chief Executive Officer

CLEVELAND CLINIC
DIVISION OF EDUCATION

ANDREW J. FISHLER, MD
Chairman
PHILLIP R. GARD
Administrator

REPRINTS: Laurie Weiss 216-444-2661 E-mail ccjm@ccf.org

Cleveland Clinic Journal of Medicine [ISSN 0891-1150 (print), ISSN 1939-2869 (online)] is published monthly by Cleveland Clinic from editorial offices at 9500 Euclid Avenue, Cleveland, OH 44195. Periodicals postage paid at Cleveland, OH, and at additional mailing offices. POSTMASTER: Send address changes to the Cleveland Clinic Journal of Medicine, NA32, 9500 Euclid Avenue, Cleveland, OH 44195.

STATEMENTS AND OPINIONS expressed in the Cleveland Clinic Journal of Medicine are those of the authors and not necessarily of Cleveland Clinic or its Board of Trustees.

SUBSCRIPTION RATES: U.S. and possessions: personal \$108; institutional \$134; single copy/back issue \$20. Foreign: \$134; single copy/back issue \$20. Institutional (multiple-reader rate) applies to libraries, schools, hospitals, and federal, commercial, and private institutions and organizations. Individual subscriptions must be in the names of, billed to, and paid by individuals.

SUBSCRIPTIONS, EDITORIAL, BILLING/ACCOUNTING, AND PRODUCTION: (same address as above) • Phone (216) 444-2661 • Fax (216) 444-9385 • E-mail ccjm@ccf.org • Web site www.ccjm.org

ADVERTISING: Joseph Dennehy, Director, Sales and Marketing, 120 Castle Ridge Rd, Manhasset, NY 11030 • Phone (516) 365-8640 • Fax (516) 365-0587 • E-mail joedennehy@verizon.net

AUTHORIZATION TO PHOTOCOPY items for internal or personal use is granted by the Cleveland Clinic Journal of Medicine [ISSN 0891-1150 (print), ISSN 1939-2869 (online)], published by Cleveland Clinic, provided that the appropriate fee is paid directly to Copyright Clearance Center, 222 Rosewood Drive, Danvers, MA 01923 USA 978-750-8400. Prior to photocopying items for educational classroom use, please contact Copyright Clearance Center, Inc., at the address above. For permission to reprint material, please fax your request with complete information to the Reproduction department at CCC, fax (978) 750-4470. For further information visit CCC online at www.copyright.com. To order bulk reprints, see above.

DISCLAIMER: The information in this educational activity is provided for general medical education purposes only and is not meant to substitute for the independent medical judgment of a physician relative to diagnostic and treatment options of a specific patient's medical condition. The viewpoints expressed in this CME activity are those of the authors. They do not represent an endorsement by The Cleveland Clinic Foundation. In no event will The Cleveland Clinic Foundation be liable for any decision made or action taken in reliance upon the information provided through this CME activity.

COPYRIGHT© 2008 THE CLEVELAND CLINIC FOUNDATION. ALL RIGHTS RESERVED. PRINTED IN U.S.A.



CONTINUED FROM PAGE 250

CURRENT DRUG THERAPY

What role will 'gliptins' play in glycemic control? 305

Sitagliptin (Januvia) is now available, vildagliptin (Galvus) is awaiting approval, and other "gliptins" are under development. Their greatest appeal appears to be their ability to stimulate insulin production with little risk of hypoglycemia.

Z. BLOOMGARDEN AND A. DREXLER

REVIEW

A review of spinal arachnoid cysts 311

The symptoms of spinal arachnoid cysts are variable and nonspecific, so these cysts are commonly misdiagnosed as herniated disks. Many are discovered incidentally.

G. HUGHES, K. UGOKWE, AND E.C. BENZEL

THE CLINICAL PICTURE

Dropped gallstones disguised as a liver abscess 316

The patient, who underwent laparoscopic cholecystectomy 3 months ago, now has abdominal pain and a spot on computed tomography that could be a liver abscess. But is it?

S.K. MAHMOOD, J.W. TOMFORD, S. ROSENBLATT, AND S. GORDON

DEPARTMENTS

Correction: Antibiotic prophylaxis dosage error 318

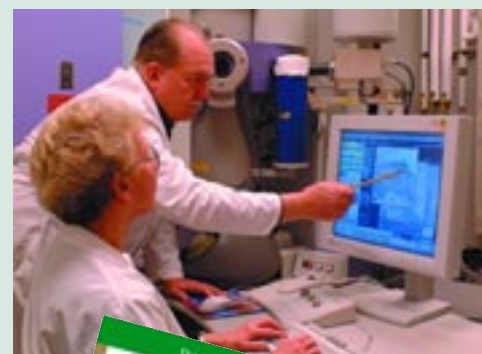
Correction to Kim A, Keys T. Infective endocarditis prophylaxis before dental procedures: new guidelines spark controversy. *Cleve Clin J Med* 2008; 75:89-92.

CME Calendar 253**CME Self-test Online** 319

UPCOMING FEATURES

- Imaging the painful knee
- Preventing metabolic bone disease in bariatric surgery patients
- How safe are EPO-type drugs?
- Uses and misuses of meta-analysis
- Long QT syndrome: A cause of sudden death
- Exercise testing for diagnosis and prognosis
- Advances in polycystic kidney disease
- Serious causes of back pain: Cancer, infection, fracture

■ VISIT OUR WEB SITE AT WWW.CCJM.ORG



DEDICATED TO EXCELLENCE
CLEVELAND
CLINIC
JOURNAL OF
MEDICINE