

## TABLE OF CONTENTS

## FROM THE EDITOR.....

**Surprisingly nonbenign imaging**

88

Nephrogenic systemic fibrosis is making us revise our view that "MRI with contrast" is a benign test.

B.F. MANDELL

## COMMENTARY.....

**Infective endocarditis prophylaxis  
before dental procedures:  
New guidelines spark controversy**

89

Many fewer people will need to receive antibiotics, according to new guidelines released by the American Heart Association.

A. KIM AND T. KEYS

## REVIEW.....

**Nephrogenic systemic fibrosis  
and its association with gadolinium  
exposure during MRI**

95

This debilitating disorder can lead to serious complications and death. In patients with renal dysfunction, we should use gadolinium-based imaging studies with caution.

N. ISSA, E.D. POGGIO, R.A. FATICA, R. PATEL,  
P.M. RUGGIERI, AND R.J. HEYKA

## EDITORIAL.....

**Gadolinium and nephrogenic systemic fibrosis: 112  
The evidence of things not seen**

Much has been learned, but "nephrogenic" is misleading: this fibrosing disorder is not caused by the kidneys.

J. KAY

## 1-MINUTE CONSULT.....

**Should all patients with  
chronic kidney disease take a statin?**

118

Some patients should take a statin, particularly those not yet on dialysis who have low-density lipoprotein cholesterol levels higher than 100 mg/dL. However, relatively few studies have addressed this question.

D. RIFKIN AND M. SARNAK

CONTINUED ON PAGE 87

CLEVELAND  
CLINIC  
JOURNAL OF  
MEDICINE

## EDITORIAL STAFF

BRIAN F. MANDELL, MD, PhD *Editor-in-Chief*  
DAVID D. K. ROLSTON, MD *Deputy Editor*  
PHILLIP E. CANUTO *Executive Editor*  
RAY BORAZANIAN *Managing Editor*  
DAVID A. HUDDLESTON *Manuscript Editor*  
JOSEPH A. PANGRACE *Medical Art Director*  
AMY SLUGG MOORE *Patient Education Editor*

## PUBLISHING OPERATIONS

PETER G. STUDER *Publisher*  
BRUCE M. MARICH *Production Manager*  
IRIS TRIVILINO *Department Coordinator*  
LAURIE WEISS *Billing/Accounting*

## CUSTOM PROGRAMS

GLENN R. CAMPBELL *Executive Editor*  
KATHY DUNASKY *Production Manager*

## ASSOCIATE EDITORS

DREW ALLEN, DO  
ALEJANDRO C. ARROLIGA, MD  
ARMAN T. ASKARI, MD  
MIHIR R. BAKHRU, MD  
DAVID BRONSON, MD  
DANIEL J. BROTMAN, MD  
WILLIAM D. CAREY, MD  
RUTH M. FARRELL, MD, MA  
GARY FRANCIS, MD  
KATHLEEN FRANCO-BRONSON, MD  
STEVEN M. GORDON, MD  
BRIAN GRIFFIN, MD  
GARY HOFFMAN, MD  
BYRON J. HOOGWERF, MD  
AMIR JAFFER, MD  
GURJIT KAUR, DO  
DERK W. KRIEGER, MD  
MANDY C. LEONARD, PharmD  
ANGELO A. LICATA, MD, PhD  
ATUL C. MEHTA, MD  
FRANKLIN A. MICHOTA, MD

ROBERT M. PALMER, MD  
CURTIS RIMMERMAN, MD  
BERNARD J. SILVER, MD  
DONALD G. VIDT, MD  
WILLIAM S. WILKE, MD  
MARC WILLIAMS, MD

## EDITORS EMERITI

JOHN D. CLOUGH, MD  
HERBERT P. WIEDEMANN, MD  
JAMES S. TAYLOR, MD

## CLEVELAND CLINIC

DELOS M. COSGROVE, MD  
*President and Chief Executive Officer*

CLEVELAND CLINIC  
DIVISION OF EDUCATION

ANDREW J. FISHLER, MD  
*Chairman*  
PHILLIP R. GARD  
*Administrator*

REPRINTS: Laurie Weiss 216-444-2661 E-mail ccjm@ccf.org

*Cleveland Clinic Journal of Medicine* [ISSN 0891-1150 (print), ISSN 1939-2869 (online)] is published monthly by Cleveland Clinic from editorial offices at 9500 Euclid Avenue, Cleveland, OH 44195. Periodicals postage paid at Cleveland, OH, and at additional mailing offices. POSTMASTER: Send address changes to the *Cleveland Clinic Journal of Medicine*, NA32, 9500 Euclid Avenue, Cleveland, OH 44195.

STATEMENTS AND OPINIONS expressed in the *Cleveland Clinic Journal of Medicine* are those of the authors and not necessarily of Cleveland Clinic or its Board of Trustees.

SUBSCRIPTION RATES: U.S. and possessions: personal \$108; institutional \$134; single copy/back issue \$20. Foreign: \$134; single copy/back issue \$20. Institutional (multiple-reader rate) applies to libraries, schools, hospitals, and federal, commercial, and private institutions and organizations. Individual subscriptions must be in the names of, billed to, and paid by individuals.

SUBSCRIPTIONS, EDITORIAL, BILLING/ACCOUNTING, AND PRODUCTION: (same address as above) • Phone (216) 444-2661 • Fax (216) 444-9385 • E-mail ccjm@ccf.org • Web site www.ccjm.org

ADVERTISING: Joseph Dennehy, Director, Sales and Marketing, 120 Castle Ridge Rd, Manhasset, NY 11030 • Phone (516) 365-8640 • Fax (516) 365-0587 • E-mail joedennehy@verizon.net

AUTHORIZATION TO PHOTOCOPY items for internal or personal use is granted by the *Cleveland Clinic Journal of Medicine*, [ISSN 0891-1150 (print), ISSN 1939-2869 (online)], published by The Cleveland Clinic, provided that the appropriate fee is paid directly to Copyright Clearance Center, 222 Rosewood Drive, Danvers, MA 01923 USA 978-750-8400. Prior to photocopying items for educational classroom use, please contact Copyright Clearance Center, Inc., at the address above. For permission to reprint material, please fax your request with complete information to the Republication department at CCC, fax (978) 750-4470. For further information visit CCC online at www.copyright.com. To order bulk reprints, see above.

DISCLAIMER: The information in this educational activity is provided for general medical education purposes only and is not meant to substitute for the independent medical judgment of a physician relative to diagnostic and treatment options of a specific patient's medical condition. The viewpoints expressed in this CME activity are those of the authors. They do not represent an endorsement by The Cleveland Clinic Foundation. In no event will The Cleveland Clinic Foundation be liable for any decision made or action taken in reliance upon the information provided through this CME activity.

COPYRIGHT © 2008 THE CLEVELAND CLINIC FOUNDATION. ALL RIGHTS RESERVED. PRINTED IN U.S.A.





# UPCOMING FEATURES

- ***S aureus* and MRSA:**  
The new adventures of a legendary pathogen
- **Preventing first bleeding**  
from esophageal varices
- **Dipstick hematuria:**  
What to do before you refer
- **Sodium phosphate bowel preps:**  
What are the caveats?
- **Gliptins: What can we expect from these new diabetes drugs?**
- **Physical examination is still valuable in assessing pleural effusions**
- **Choosing the right imaging test for a painful knee**
- **VISIT OUR WEB SITE AT [WWW.CCJM.ORG](http://WWW.CCJM.ORG)**



DEDICATED TO LIFELONG LEARNING

**CLEVELAND CLINIC JOURNAL OF MEDICINE**

CONTINUED FROM PAGE 84

## REVIEW

## Screen for portopulmonary hypertension, especially in liver transplant candidates 121

Portopulmonary hypertension should be looked for in patients with liver disease, especially if liver transplantation is being considered, as it may make transplantation riskier to perform.

K.L. SWANSON AND M.J. KROWKA

## REVIEW

## Red eye for the internist: When to treat, when to refer 137

We review the conditions that can cause this ocular sign—the ones that internists can comfortably manage, and the ones that are best managed by an eye specialist.

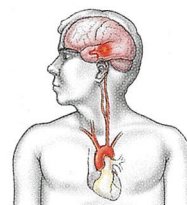
A. GALOR AND B.H. JENG

## CARDIOVASCULAR BOARD REVIEW

## A young man with acute weakness of his right arm 145

A previously healthy, relatively young man has had a stroke. What is the cause and what should be done?

M.A. KAMINSKI, C.D. TAN, AND A.T. ASKARI



## REVIEW

## Preventing and managing diabetic complications in elderly patients 153

Elderly patients with diabetes are prone to a number of complications, some of which take precedence over, hinder, or preclude the intensive glucose control recommended for younger diabetic patients.

T. HORNICK AND D.C. ARON

## DEPARTMENTS

## CME Calendar 92

## CME Credit Test 159

- The *Cleveland Clinic Journal of Medicine* is peer-reviewed and indexed in *Index Medicus*.