

TABLE OF CONTENTS

FROM THE EDITOR

A New Year's toast

6

With so many important clinical trials being published each year, it is easy to focus on the study methodology and conclusions, overlooking the years of careful clinical observation that preceded the trial development.

B.F. MANDELL

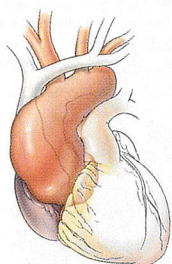
REVIEW

CT imaging for acute aortic syndrome

7

Advances in computed tomography (CT) have made the diagnosis of acute aortic syndromes faster and easier.

A.D. SMITH AND P. SCHOENHAGEN



EDITORIAL

Acute aortic syndromes: Time to talk of many things

25

Lewis Carroll's poem of 1872 is a useful starting point for identifying issues resulting from confusion over the various acute aortic syndromes.

L.G. SVENSSON

COMMENTARY

Four no more: The 'PSA cutoff era' is over

30

The prostate-specific antigen (PSA) value is only one of the risk factors for prostate cancer, and no PSA value rules cancer in or out. Therefore, our laboratory reports will no longer list 4.0 µg/L as the upper limit of normal. Instead, we will estimate the patient's actual risk.

J.S. JONES AND E. KLEIN

EDITORIAL

Prostate cancer: Too much dogma, not enough data

33

In our management of prostate cancer, dogma often outweighs real data. Well-designed, randomized clinical trials are the answer.

D. RAGHAVAN

CONTINUED ON PAGE 5

■ The *Cleveland Clinic Journal of Medicine* is peer-reviewed and indexed in *Index Medicus*.

CLEVELAND
CLINIC
JOURNAL OF
MEDICINE

EDITORIAL STAFF

BRIAN F. MANDELL, MD, PhD *Editor-in-Chief*
DAVID D. K. ROLSTON, MD *Deputy Editor*
PHILLIP E. CANUTO *Executive Editor*
RAY BORAZANIAN *Managing Editor*
DAVID A. HUDDLESTON *Manuscript Editor*
JOSEPH A. PANGRACE *Medical Art Director*
AMY SLUGG MOORE *Patient Education Editor*

PUBLISHING OPERATIONS

PETER G. STUDER *Publisher*
BRUCE M. MARICH *Production Manager*
IRIS TRIVILINO *Department Coordinator*
LAURIE WEISS *Billing/Accounting*

CUSTOM PROGRAMS

GLENN R. CAMPBELL *Executive Editor*
KATHY DUNASKY *Production Manager*

ASSOCIATE EDITORS

DREW ALLEN, DO
ALEJANDRO C. ARROLIGA, MD
ARMAN T. ASKARI, MD
MIHIR R. BAKHRU, MD
DAVID BRONSON, MD
DANIEL J. BROTMAN, MD
WILLIAM D. CAREY, MD
RUTH M. FARRELL, MD, MA
GARY FRANCIS, MD
KATHLEEN FRANCO-BRONSON, MD
STEVEN M. GORDON, MD
BRIAN GRIFFIN, MD
GARY HOFFMAN, MD
BYRON J. HOOGWERF, MD
AMIR JAFFER, MD
GURJIT KAUR, DO
DERK W. KRIEGER, MD
MANDY C. LEONARD, PharmD
ANGELO A. LICATA, MD, PhD
ATUL C. MEHTA, MD
FRANKLIN A. MICHOTA, MD

ROBERT M. PALMER, MD
CURTIS RIMMERMAN, MD
BERNARD J. SILVER, MD
DONALD G. VIDT, MD
WILLIAM S. WILKE, MD
MARC WILLIAMS, MD

EDITORS EMERITI

JOHN D. CLOUGH, MD
HERBERT P. WIEDEMANN, MD
JAMES S. TAYLOR, MD

CLEVELAND CLINIC

DELOS M. COSGROVE, MD
President and Chief Executive Officer

CLEVELAND CLINIC
DIVISION OF EDUCATION

ANDREW J. FISHELEDER, MD
Chairman
PHILLIP R. GARD
Administrator

REPRINTS: Laurie Weiss 216-444-2661 E-mail ccjm@ccf.org

Cleveland Clinic Journal of Medicine [ISSN 0891-1150 (print), ISSN 1939-2869 (online)] is published monthly by Cleveland Clinic from editorial offices at 9500 Euclid Avenue, Cleveland, OH 44195. Periodicals postage paid at Cleveland, OH, and at additional mailing offices. POSTMASTER: Send address changes to the *Cleveland Clinic Journal of Medicine*, NA32, 9500 Euclid Avenue, Cleveland, OH 44195.

STATEMENTS AND OPINIONS expressed in the *Cleveland Clinic Journal of Medicine* are those of the authors and not necessarily of Cleveland Clinic or its Board of Trustees.

SUBSCRIPTION RATES: U.S. and possessions: personal \$108; institutional \$134; single copy/back issue \$20. Foreign: \$134; single copy/back issue \$20. Institutional (multiple-reader rate) applies to libraries, schools, hospitals, and federal, commercial, and private institutions and organizations. Individual subscriptions must be in the names of, billed to, and paid by individuals.

SUBSCRIPTIONS, EDITORIAL, BILLING/ACCOUNTING, AND PRODUCTION: (same address as above) • Phone (216) 444-2661 • Fax (216) 444-9385 • E-mail ccjm@ccf.org • Web site www.ccjm.org

ADVERTISING: Joseph Dennehy, Director, Sales and Marketing, 120 Castle Ridge Rd, Manhasset, NY 11030 • Phone (516) 365-8640 • Fax (516) 365-0587 • E-mail joedennehy@verizon.net

AUTHORIZATION TO PHOTOCOPY items for internal or personal use is granted by the *Cleveland Clinic Journal of Medicine*, [ISSN 0891-1150 (print), ISSN 1939-2869 (online)], published by The Cleveland Clinic, provided that the appropriate fee is paid directly to Copyright Clearance Center, 222 Rosewood Drive, Danvers, MA 01923 USA 978-750-8400. Prior to photocopying items for educational classroom use, please contact Copyright Clearance Center, Inc., at the address above. For permission to reprint material, please fax your request with complete information to the Reproduction department at CCC, fax (978) 750-4470. For further information visit CCC online at www.copyright.com. To order bulk reprints, see above.

DISCLAIMER: The information in this educational activity is provided for general medical education purposes only and is not meant to substitute for the independent medical judgment of a physician relative to diagnostic and treatment options of a specific patient's medical condition. The viewpoints expressed in this CME activity are those of the authors. They do not represent an endorsement by The Cleveland Clinic Foundation. In no event will The Cleveland Clinic Foundation be liable for any decision made or action taken in reliance upon the information provided through this CME activity.

COPYRIGHT© 2008 THE CLEVELAND CLINIC FOUNDATION. ALL RIGHTS RESERVED. PRINTED IN U.S.A.



UPCOMING FEATURES

- Preventing, managing complications of diabetes in elderly patients
- Nephrogenic systemic fibrosis and gadolinium MRI contrast
- *S aureus* and MRSA: The new adventures of a legendary pathogen
- A young man with cardioembolic stroke
- Should all patients with kidney disease receive a statin?
- What are the caveats to using sodium phosphate bowel prep agents?

■ VISIT OUR WEB SITE AT WWW.CCJM.ORG



DEDICATED TO LIFELONG LEARNING
CLEVELAND
CLINIC
JOURNAL OF
MEDICINE

CONTINUED FROM PAGE 2

1-MINUTE CONSULT

When should a methacholine challenge be ordered for a patient with suspected asthma? 37

This test is used if the diagnosis of asthma is in question, but it is currently not recommended for routine management of asthma.

E. SWARTZ AND D. LANG

MEDICAL GRAND ROUNDS

A perspective on the Fluids and Catheters Treatment Trial (FACTT). Fluid restriction is superior in acute lung injury and ARDS 42

Although most clinicians tend to manage acute lung injury and acute respiratory distress syndrome by giving more rather than less fluid, patients may actually fare better under a strategy of limited fluid intake and increased fluid excretion.

H.P. WIEDEMANN

REVIEW

Masquerade: Nonspinal musculoskeletal disorders that mimic spinal conditions 50

Sometimes pain in the neck or back is caused by a problem in the shoulder, hip, or extremities. Common mimics are rotator cuff tear, bursitis in the hip, peripheral nerve compression, and arthritis in the shoulder and hip.

D.B. PATER, J. BREMS, I. LIEBERMAN, G.R. BELL, AND R.F. MCCLAIN

INTERPRETING KEY TRIALS

The STAR*D study: Treating depression in the real world 57

This study found that depression can be treated successfully by primary care physicians under real-world conditions. The particular drug or drugs used are not as important as a rational plan.

B.N. GAYNES, A.J. RUSH, M.H. TRIVEDI, S.R. WISNIEWSKI, D. SPENCER, AND M. FAVA

REVIEW

Managing diabetes in the elderly: Go easy, individualize 70

Especially in frail, elderly patients, strict glycemic control should be emphasized less than avoiding malnutrition and hypoglycemia and achieving the best quality of life possible.

T. HORNICK AND D.C. ARON

DEPARTMENTS

CME Calendar 24 CME Self-test Online 79