



TABLE OF CONTENTS

FROM THE EDITOR.....

Recognizing a common disease hiding in plain sight 163

Clinicians often fail to diagnose celiac disease promptly. They don't realize how common it is, and they don't recognize its many manifestations other than diarrhea.

B. F. MANDELL

IM BOARD REVIEW.....

An elderly woman with severe anemia 172

Her hemoglobin level is 7.7 g/dL, and a peripheral blood smear shows hypochromic microcytic erythrocytes. What is the most likely cause?

E. HAYEK

CURRENT DRUG THERAPY.....

Update on hormonal contraception 186

The trends are for lower estrogen doses, newer progestins, longer cycles, and non-oral options. A review of the latest products.

N. MASIMASI, M.S. SIVANANDY, AND H.L. THACKER

REVIEW.....

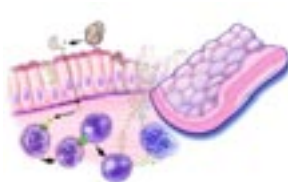
Metabolic syndrome: Controversial but useful 199

The cluster of obesity, impaired fasting glucose, elevated triglycerides, low high-density lipoprotein cholesterol, and hypertension may not be a "real" syndrome in the strict sense, but it can still be a useful concept if it helps persuade patients to undertake healthy lifestyle changes.

M. STOLAR

REVIEW.....

Celiac disease: More common than you think 209



The disease is underrecognized because about half of people who have it do not have the classic gastrointestinal symptoms. Instead, they may present with nonspecific manifestations of nutritional deficiency or have no symptoms at all.

M.S. HARRISON, M. WEHBI, AND K. OBIDEEN



If you have celiac disease 216

CONTINUED ON PAGE 166

■ The *Cleveland Clinic Journal of Medicine* is peer-reviewed and indexed in *Index Medicus*.

CLEVELAND CLINIC JOURNAL OF MEDICINE



EDITORIAL STAFF

BRIAN F. MANDELL, MD, PhD Editor-in-Chief
DAVID D. K. ROLSTON, MD Deputy Editor
PHILLIP E. CANUTO Executive Editor
RAY BORAZANIAN Managing Editor
DAVID A. HUDDLESTON Manuscript Editor
JOSEPH A. PANGRACE Medical Art Director
AMY SLUGG MOORE Patient Education Editor

PUBLISHING OPERATIONS

PETER G. STUDER Publisher
BRUCE M. MARICH Production Manager
IRIS TRIVILINO Department Coordinator
LAURIE WEISS Billing/Accounting

CUSTOM PROGRAMS

GLENN R. CAMPBELL Executive Editor
WAYNE KUZNAR Editorial Project Leader
KATHY DUNASKY Production Manager

ASSOCIATE EDITORS

ALEJANDRO C. ARROLIGA, MD
ARMAN T. ASKARI, MD
MICHAEL BOLOOKI, MD
DAVID BRONSON, MD
DANIEL J. BROTMAN, MD
WILLIAM D. CAREY, MD
EIZA CHING, MD
GARY FRANCIS, MD
KATHLEEN FRANCO-BRONSON, MD
STEVEN M. GORDON, MD
BRIAN GRIFFIN, MD
GARY HOFFMAN, MD
BYRON J. HOOGWERF, MD
AMIR JAFFER, MD
GURJIT KAUR, DO
DERK W. KRIEGER, MD
MANDY C. LEONARD, PharmD
ANGELO A. LICATA, MD, PhD
ATUL C. MEHTA, MD
FRANKLIN A. MICHOTA, MD
ROBERT M. PALMER, MD
S. SETHU K. REDDY, MD

CURTIS RIMMERMAN, MD

DOUGLAS SEIDNER, MD
BERNARD J. SILVER, MD
DONALD G. VIDT, MD
WILLIAM S. WILKE, MD
MARC WILLIAMS, MD

EDITORS EMERITI

JOHN D. CLOUGH, MD
HERBERT P. WIEDEMANN, MD
JAMES S. TAYLOR, MD

CLEVELAND CLINIC

DELOS M. COSGROVE, MD
President and Chief Executive Officer

CLEVELAND CLINIC

DIVISION OF EDUCATION
ANDREW J. FISHLER, MD
Chairman
PHILLIP R. GARD
Administrator

REPRINTS: Laurie Weiss 216-444-2661 E-mail ccjm@ccf.org

Cleveland Clinic Journal of Medicine (ISSN 0891-1150) is published monthly by Cleveland Clinic from editorial offices at 9500 Euclid Avenue, Cleveland, OH 44195. Periodicals postage paid at Cleveland, OH, and at additional mailing offices. POSTMASTER: Send address changes to the *Cleveland Clinic Journal of Medicine*, NA32, 9500 Euclid Avenue, Cleveland, OH 44195.

STATEMENTS AND OPINIONS expressed in the *Cleveland Clinic Journal of Medicine* are those of the authors and not necessarily of Cleveland Clinic or its Board of Trustees.

SUBSCRIPTION RATES: U.S. and possessions: personal \$108; institutional \$134; single copy/back issue \$20. Foreign: \$134; single copy/back issue \$20. Institutional (multiple-reader rate) applies to libraries, schools, hospitals, and federal, commercial, and private institutions and organizations. Individual subscriptions must be in the names of, billed to, and paid by individuals.

SUBSCRIPTIONS, EDITORIAL, BILLING/ACCOUNTING, AND PRODUCTION: (same address as above) • Phone (216) 444-2661 • Fax (216) 444-9385 • E-mail ccjm@ccf.org • Web site www.ccjm.org

ADVERTISING: Joseph Dennehy, Director, Sales and Marketing, 120 Castle Ridge Rd, Manhasset, NY 11030 • Phone (516) 365-8640 • Fax (516) 365-0587 • E-mail JoeDennehy24@aol.com

AUTHORIZATION TO PHOTOCOPY items for internal or personal use is granted by the *Cleveland Clinic Journal of Medicine*, ISSN 0891-1150, published by The Cleveland Clinic, provided that the appropriate fee is paid directly to Copyright Clearance Center, 222 Rosewood Drive, Danvers, MA 01923 USA 978-750-8400. Prior to photocopying items for educational classroom use, please contact Copyright Clearance Center, Inc., at the address above. For permission to reprint material, please fax your request with complete information to the Republication department at CCC, fax (978) 750-4470. For further information visit CCC online at www.copyright.com. To order bulk reprints, see above.

DISCLAIMER: The information in this educational activity is provided for general medical education purposes only and is not meant to substitute for the independent medical judgment of a physician relative to diagnostic and treatment options of a specific patient's medical condition. The viewpoints expressed in this CME activity are those of the authors. They do not represent an endorsement by The Cleveland Clinic Foundation. In no event will The Cleveland Clinic Foundation be liable for any decision made or action taken in reliance upon the information provided through this CME activity.

COPYRIGHT© 2007 THE CLEVELAND CLINIC FOUNDATION. ALL RIGHTS RESERVED. PRINTED IN U.S.A.





CONTINUED FROM PAGE 162

MEDICAL PROBLEMS IN PREGNANCY.....

Managing genital herpes infections in pregnancy 217

Primary care physicians can improve the mother's health and reduce the chance of transmission from mother to neonate by diagnosing and managing genital herpes before or during pregnancy—or better yet, by helping to prevent it.

C. GARDELLA AND Z.A. BROWN

INTERPRETING KEY TRIALS.....

Interpreting the African American Heart Failure Trial (A-HeFT). Isosorbide dinitrate-hydralazine improves outcomes in African Americans with heart failure 227

This placebo-controlled trial was the first to evaluate a therapy in a specific racial group, and it points the way to a more individualized approach to heart failure therapy.

M. COLVIN-ADAMS AND A.L. TAYLOR

PATIENT-ORIENTED EVIDENCE THAT MATTERS (POEMs).....

■ Acetaminophen is equivalent to celecoxib in degenerative joint disease 169

DEPARTMENTS

CME Calendar 184

Letter to the Editor 237

Bariatric surgery (November 2006)

Corrections 238

Drug-eluting stents (February 2007)

Glycemic control (dosage error, February 2007)

CME Self-test Online 239

UPCOMING FEATURES

- HIV testing for all:
The new standard of care
- The 'ART' and the science of assisted reproduction
- Managing Parkinson disease at all stages
- Fibromuscular dysplasia:
Not so rare, and not just in the renal arteries
- Opiate addiction therapy goes office-based
- Colorectal cancer screening in the elderly: When should it be stopped?
- Hyponatremia in a stroke patient: SIADH? Or cerebral salt wasting?

■ VISIT OUR WEB SITE AT WWW.CCJM.ORG