



TABLE OF CONTENTS

FROM THE EDITOR..... **'Just listen to the patient'** 305

Sometimes our patients really do tell us exactly what they have, if we listen with a prepared mind.

B. F. MANDELL

REVIEW..... **The optimal revascularization strategy for multivessel coronary artery disease: The debate continues** 317

In contrast to previous studies, a study from a large New York registry found that mortality rates were lower among patients who underwent coronary artery bypass grafting (CABG) than among similar patients who underwent percutaneous coronary intervention (PCI). What are we to believe?

I. P. CASSERLY

EDITORIAL..... **CABG or PCI? A cardiothoracic surgeon's perspective. The devil (or truth) is in the details** 329

The preference for treating multivessel coronary disease with percutaneous interventions is not justified.

J. F. SABIK III

EDITORIAL..... **CABG or PCI? An interventional cardiologist's perspective. To stent or to operate: Is this the question?** 340

Neither the New York study nor Dr. Casserly provides a plausible explanation for why CABG might offer a survival advantage.

S. J. BRENER

CURRENT DRUG THERAPY..... **Side effects of antidepressants: An overview** 351

Noncompliance with antidepressant treatment remains worrisome. Educating and reassuring patients about potential side effects promotes effective treatment.

E. A. KHAWAM, G. LAURENCIC, AND D. A. MALONE JR



If you need an antidepressant

363

THE CLINICAL PICTURE..... **A young woman with an eroded plaque on the hand** 369

She has a painful, inflamed eroded plaque at the previous site of an intravenous catheter. She is afebrile, and blood cultures and tissue cultures are negative.

A. G. LAUNGANI, A. KHANDLWAL, AND K. J. TOMECKI

CONTINUED ON PAGE 308

CLEVELAND CLINIC JOURNAL OF MEDICINE



EDITORIAL STAFF

BRIAN F. MANDELL, MD, PhD *Editor-in-Chief*
DAVID D. K. ROLSTON, MD *Deputy Editor*
PHILLIP E. CANUTO *Executive Editor*
RAY BORAZANIAN *Managing Editor*
DAVID A. HUDDLESTON *Manuscript Editor*
JOSEPH A. PANGRACE *Medical Art Director*
AMY SLUGG MOORE *Patient Education Editor*

PUBLISHING OPERATIONS

PETER G. STUDER *Publisher*
BRUCE M. MARICH *Production Manager*
IRIS TRIVILINO *Department Coordinator*
LAURIE WEISS *Billing/Accounting*

CUSTOM PROGRAMS

GLENN R. CAMPBELL *Executive Editor*
WAYNE KUZNAR *Editorial Project Leader*
KATHY DUNASKY *Department Coordinator*

ASSOCIATE EDITORS

ALEJANDRO C. ARROLIGA, MD
ARMAN T. ASKARI, MD
DAVID BRONSON, MD
DANIEL J. BROTMAN, MD
WILLIAM D. CAREY, MD
GARY FRANCIS, MD
KATHLEEN FRANCO-BRONSON, MD
STEVEN M. GORDON, MD
BRIAN GRIFFIN, MD
THOMAS J. HELTON, DO
GARY HOFFMAN, MD
BYRON J. HOOGWERF, MD
AMIR JAFFER, MD
GURJIT KAUR, DO
DERK W. KRIEGER, MD
MANDY C. LEONARD, PharmD
ANGELO A. LICATA, MD, PhD
FRANCISCO J. MARRERO, MD
ATUL C. MEHTA, MD
FRANKLIN A. MICHOTA, MD
ROBERT M. PALMER, MD

S. SETHU K. REDDY, MD
DOUGLAS SEIDNER, MD
BERNARD J. SILVER, MD
DONALD G. VIDT, MD
WILLIAM S. WILKE, MD
MARC WILLIAMS, MD

EDITORS EMERITI

JOHN D. CLOUGH, MD
HERBERT P. WIEDEMANN, MD
JAMES S. TAYLOR, MD

CLEVELAND CLINIC

DELOS M. COSGROVE, MD
President and Chief Executive Officer

CLEVELAND CLINIC

DIVISION OF EDUCATION
ANDREW J. FISHLER, MD
Chairman
PHILLIP R. GARD
Administrator

REPRINTS: Laurie Weiss 216-444-2661 E-mail ccjm@ccf.org

Cleveland Clinic Journal of Medicine (ISSN 0891-1150) is published monthly by the Cleveland Clinic from editorial offices at 9500 Euclid Avenue, Cleveland, Ohio 44195. Application to mail at Periodicals Postage Rates is pending at Cleveland, Ohio, and at additional mailing offices. POSTMASTER: Send address changes to the *Cleveland Clinic Journal of Medicine*, NA32, 9500 Euclid Avenue, Cleveland, OH 44195

STATEMENTS AND OPINIONS expressed in the *Cleveland Clinic Journal of Medicine* are those of the authors and not necessarily of Cleveland Clinic or its Board of Trustees.

SUBSCRIPTION RATES: U.S. and possessions: personal \$103; institutional \$129; single copy/back issue \$18. Foreign: \$129; single copy/back issue \$18. Institutional (multiple-reader rate) applies to libraries, schools, hospitals, and federal, commercial, and private institutions and organizations. Individual subscriptions must be in the names of, billed to, and paid by individuals.

SUBSCRIPTIONS, EDITORIAL, BILLING/ACCOUNTING AND PRODUCTION: (same address as above) Phone (216) 444-2661 Fax (216) 444-9385 E-mail ccjm@ccf.org <http://www.ccjm.org>

ADVERTISING: Joseph Dennehy, Director, Sales and Marketing, 120 Castle Ridge Rd, Manhasset, NY 11030 • Phone (516) 365-8640 • Fax (516) 365-0587 E-mail JoeDennehy24@aol.com

AUTHORIZATION TO PHOTOCOPY items for internal or personal use is granted by the *Cleveland Clinic Journal of Medicine*, ISSN 0891-1150, published by The Cleveland Clinic Foundation, provided that the appropriate fee is paid directly to Copyright Clearance Center, 222 Rosewood Drive, Danvers, MA 01923 USA 978-750-8400. Prior to photocopying items for educational classroom use, please contact Copyright Clearance Center, Inc., at the address above. For permission to reprint material, please fax your request with complete information to the Reproduction department at CCC, fax (978) 750-4470. For further information visit CCC Online at <http://www.copyright.com>. To order bulk reprints, see above.

DISCLAIMER: This information is provided for general medical education purposes only and is not meant to substitute for the independent medical judgment of a physician relative to the diagnostic and treatment options of a specific patient's medical condition. In no event will Cleveland Clinic be liable for any decision made or action taken in reliance upon the information provided through this activity.

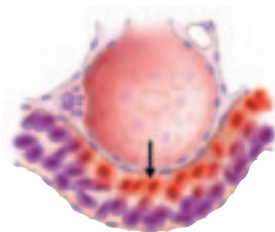
COPYRIGHT© 2006 THE CLEVELAND CLINIC FOUNDATION PRINTED IN U.S.A.





CONTINUED FROM PAGE 306

IM BOARD REVIEW



A middle-aged woman with chronic liver disease and shortness of breath 375

Her dyspnea has worsened in the last 3 months and is worse when she assumes the upright position. What is the cause?

O.C. IOACHIMESCU AND J.K. STOLLER

CURRENT DRUG THERAPY

New therapies for type 2 diabetes based on glucagon-like peptide 1 382

Several new agents are under development, and one has been approved. They will be attractive for a number of reasons.

M. SALEHI AND D.A. D'ALESSIO

CURRENT DRUG THERAPY

Do thiazolidinediones cause heart failure? A critical review 390

Although these drugs cause fluid retention, they may have benefits in patients with heart failure. This article outlines how to monitor for and manage side effects.

W.H.W. TANG

REVIEW

Assessing the risk of surgery in patients with liver disease 398

All liver disease is not the same, and neither is all surgery, but recent studies have defined objective criteria for determining when surgery is safe for patients with liver disease.

A. SUMAN AND W.D. CAREY

PATIENT-ORIENTED EVIDENCE THAT MATTERS (POEMs)

GERD therapy is minimally effective in chronic cough 344

HPV vaccine prevents cervical intraepithelial neoplasia 347

Barrett esophagus occurs in 1.6% of population 365

Aspirin reduces risk of cardiovascular events, increases risk of bleeding 368

DEPARTMENTS

Letter to the Editor 310

Contrast-induced nephropathy (January 2006)

CME Calendar 313

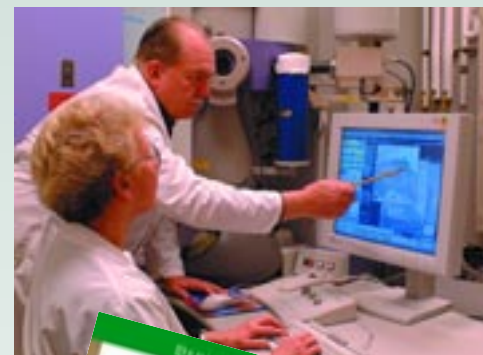
CME Self-test Online 406

■ The *Cleveland Clinic Journal of Medicine* is peer-reviewed and indexed in *Index Medicus*.

UPCOMING FEATURES

- New drugs for diabetes:
Exenatide
Pramlintide
Inhaled insulin
- Sexually transmitted disease update
- Heel pain, step by step
- Peripheral arterial disease: Recognition, medical management
- Diagnosing osteoporosis: It's more than a T score
- Myeloperoxidase: A marker of coronary disease
- Addressing the challenge of cardiorenal syndrome
- How to assess and manage adrenal 'incidentalomas'

■ VISIT OUR WEB SITE AT WWW.CCJM.ORG



DEDICATED TO LIFELONG LEARNING
CLEVELAND
CLINIC
JOURNAL OF
MEDICINE