



TABLE OF CONTENTS

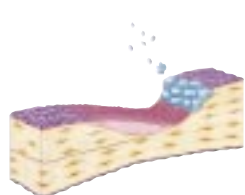
FROM THE EDITOR

The promise of molecular biology: Efficacy, safety, wallet depletion 584

Molecular biology is entering its second wave, with effective but expensive treatments. Recombinant human parathyroid hormone (PTH) is a case in point.

J.D. CLOUGH

CURRENT DRUG THERAPY



Recombinant human PTH 1-34 (Forteo): An anabolic drug for osteoporosis 585

We have an important new drug for osteoporosis. Now who should get it? And who will pay for it?

C. DEAL AND J. GIDEON

IM BOARD REVIEW

A 34-year-old man with facial droop and dysarthria 602

A previously well man develops flulike symptoms and focal neurologic deficits. What is the cause?

A.A. LATIF, H. JNEID, C.M. ISADA, AND G.S. FRANCIS

REVIEW

Managing weight gain as a side effect of antidepressant therapy 614

Some drugs are more apt to cause weight gain than others; one should inform and work with the patient.

R. DESHMUKH AND K. FRANCO

REVIEW

Amiodarone-induced thyrotoxicosis: Diagnostic and therapeutic strategies 624

It is difficult but important to distinguish the two types of amiodarone-induced thyrotoxicosis.

G.A. CARDENAS, J.M. CABRAL, AND C.A. LESLIE

CONTINUED ON PAGE 583

CLEVELAND CLINIC JOURNAL OF MEDICINE



JOHN D. CLOUGH, MD *Editor-in-Chief*
BRIAN F. MANDELL, MD, PHD *Deputy Editor*
PETER G. STUDER *Publisher*
PHILLIP E. CANUTO *Executive Editor*
GLENN R. CAMPBELL *Executive Editor*
RAY BORAZANIAN *Managing Editor*
DAVID A. HUDDLESTON *Manuscript Editor*
AMY SLUGG MOORE *Patient Education Editor*
BRUCE M. MARICH *Production Manager*
ROBERT J. DEMAREST *Medical Art Director*
JOSEPH A. PANGRACE *Medical Illustrator*
DAVID R. SCHUMICK *Medical Illustrator*
JOSEPH KANASZ *Medical Illustrator*
IRIS TRIVILINO *Department Coordinator*
CINDY PALMER *Billing/Accounting*

EDITORIAL ADVISORY BOARD

MUZAFFAR AHMAD, MD
WILMA FOWLER BERGFELD, MD
EMMANUEL L. BRAVO, MD
WILLIAM R. HART, MD
ERIC A. KLEIN, MD
FLOYD D. LOOP, MD
DOUGLAS S. MOODIE, MD
RICHARD H. NODAR, PHD
WILLIAM L. PROUDFIT, MD
WILLIAM C. SHELDON, MD
ERIC J. TOPOL, MD
HERBERT P. WIEDEMANN, MD

MANDY C. LEONARD, PHARM D
ANGELO A. LICATA, MD, PHD
DAVID L. LONGWORTH, MD
MAURIE MARKMAN, MD
ATUL C. MEHTA, MD
NEIL B. MEHTA, MD
FRANKLIN A. MICHOTA, MD
STEVEN NISSEN, MD
ROBERT M. PALMER, MD
NORMAN B. RATLIFF, MD
S. SETHU K. REDDY, MD
MARK E. ROSE, MD
MARK ROTH, MD
DOUGLAS SEIDNER, MD
CATHY A. SILA, MD
HOLLY L. THACKER, MD
JAMES THOMAS, MD
DONALD G. VIDT, MD
WILLIAM S. WILKE, MD
MARC WILLIAMS, MD
JAMES B. YOUNG, MD

ASSOCIATE EDITORS

ALEJANDRO C. ARROLIGA, MD
DAVID BRONSON, MD
WILLIAM D. CAREY, MD
BRIAN A. CLARK, PHD, MD
BRIAN G. DONLEY, MD
GARY FRANCIS, MD
KATHLEEN FRANCO-BRONSON, MD
STEVEN M. GORDON, MD
BRIAN GRIFFIN, MD
GARY HOFFMAN, MD
BYRON J. HOOGWERF, MD
MANI S. KAVURU, MD
RITA S. LEE, MD

CLEVELAND CLINIC
FOUNDATION DIVISION
OF EDUCATION
ANDREW J. FISHLER, MD
Chairman
PHILLIP R. GARD
Administrator

REPRINTS: Marsha Fogler 1-800-482-1450 mfogler@medicalreprints.com

The *Cleveland Clinic Journal of Medicine* (ISSN 0891-1150) is published 12 times yearly by The Cleveland Clinic Foundation.

STATEMENTS AND OPINIONS expressed in the *Cleveland Clinic Journal of Medicine* are those of the authors and not necessarily of The Cleveland Clinic Foundation or its Board of Trustees.

SUBSCRIPTION RATES: U.S. and possessions: personal \$98; institutional \$124; single copy/back issue \$16. Foreign: \$124; single copy/back issue \$16. Institutional (multiple-reader rate) applies to libraries, schools, hospitals, and federal, commercial, and private institutions and organizations. Individual subscriptions must be in the names of, billed to, and paid by individuals.

POSTMASTER ADDRESS CHANGES: *Cleveland Clinic Journal of Medicine*, NA32, 9500 Euclid Avenue, Cleveland, OH 44195

SUBSCRIPTIONS, EDITORIAL, BILLING/ACCOUNTING AND PRODUCTION: (same address as above) Phone (216) 444-2661 Fax (216) 444-9385 E-mail ccjm@ccf.org <http://www.ccjm.org>

ADVERTISING: Joseph Dennehy, Director, Sales and Marketing, 120 Castle Ridge Rd, Manhasset, NY 11030 • Phone (516) 365-8640 • Fax (516) 365-0587

AUTHORIZATION TO PHOTOCOPY items for internal or personal use is granted by the *Cleveland Clinic Journal of Medicine*, ISSN 0891-1150, published by The Cleveland Clinic Foundation, provided that the appropriate fee is paid directly to Copyright Clearance Center, 222 Rosewood Drive, Danvers, MA 01923 USA 978-750-8400. Prior to photocopying items for educational classroom use, please contact Copyright Clearance Center, Inc., at the address above. For permission to reprint material, please fax your request with complete information to the Republication department at CCC, fax (978) 750-4470. For further information visit CCC Online at <http://www.copyright.com>. To order bulk reprints, see above.

DISCLAIMER: This information is provided for general medical education purposes only and is not meant to substitute for the independent medical judgment of a physician relative to the diagnostic and treatment options of a specific patient's medical condition. In no event will The Cleveland Clinic Foundation be liable for any decision made or action taken in reliance upon the information provided through this activity.

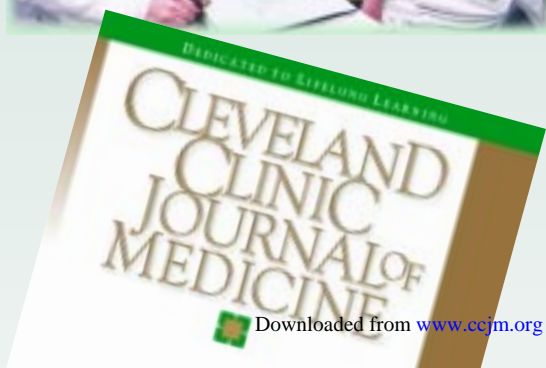


COPYRIGHT© 2003 THE CLEVELAND CLINIC FOUNDATION PRINTED IN U.S.A.



UPCOMING FEATURES

- JNC 7: New plain and simple blood pressure guidelines
- Role of ezetimibe (Zetia) in cholesterol-lowering
- Managing antibiotic resistance in the ICU
- Does this patient have Alzheimer disease?
- New coronary imaging: See the wall, not the lumen
- Contraception update
- When does an adult need a tonsillectomy?
- Heart disease and depression: The mind-body link
- How to manage asymptomatic hyperparathyroidism
- Genetic discrimination: The coming dilemma



CONTINUED FROM PAGE 578

COMMENTARY

Are we winning or losing the war on cancer? 632

The news from the cancer front is good and bad.

M. MARKMAN

REVIEW

Using C-reactive protein to assess cardiovascular disease risk 634

CRP is now a recognized cardiac test. But who should be tested?

M.H. SHISHEBOR, D.L. BHATT, AND E.J. TOPOL

REVIEW

New advances transform the management of women with abnormal Pap tests 641

We review the new thin-layer slide system, the new HPV test, the 2001 reporting system for Pap tests, and new management guidelines.

X.W. JIN, C. NIELSEN, J. BRAINARD, AND B. YEN-LIEBERMAN

INTERPRETING KEY TRIALS

In refractory temporal lobe epilepsy, consider surgery sooner 649

Epilepsy surgery is perhaps the most underused therapy in all of medicine today.

R. LACHHWANI AND H. LÜDERS

DEPARTMENTS

Classified Advertisements 654



CME Self-test Online 655

■ VISIT OUR WEB SITE AT [HTTP://WWW.CCM.ORG](http://www.ccm.org)

■ The Cleveland Clinic Journal of Medicine is peer-reviewed and indexed in *Index Medicus*.