

TABLE OF CONTENTS

FROM THE EDITOR

Cyber-CME and the *Journal's* computer-literate readers 7

Congratulations to you, our readers, on your adaptability and computer literacy.

J.D. CLOUGH

REVIEW

Relieving migraine pain: Sorting through the options 8

Even with effective treatments, including new drugs in convenient dosage forms, the key is still a good working patient-physician relationship.

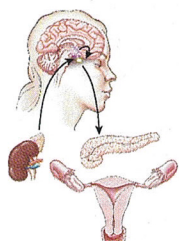
L.K. MANNIX



**PATIENT
INFORMATION**

Migraine treatments—what you can expect 30

REVIEW

**Polycystic ovary syndrome: Pathogenesis and treatment over the short and long term** 31

PCOS can lead to serious sequelae such as endometrial or ovarian cancer, diabetes mellitus, and coronary artery disease.

T.L. MARX AND A.E. MEHTA

1-MINUTE CONSULT

**Brief answers to specific clinical questions** 46**Should everyone with a recent myocardial infarction receive a beta-blocker and an ACE inhibitor?**

Yes, except for those with the standard contraindications to these drugs.

J.C. HOSTETTER AND S. GHAFARI

CONTINUED ON PAGE 4

CLEVELAND
CLINIC
JOURNAL OF
MEDICINE

JOHN D. CLOUGH, MD *Editor-in-Chief*
BRIAN F. MANDELL, MD, PHD *Deputy Editor*
PETER G. STUDER *Publisher*
PHILLIP E. CANUTO *Executive Editor*
GLENN R. CAMPBELL *Executive Editor*
RAY BORAZANIAN *Managing Editor*
DAVID A. HUDDLESTON *Manuscript Editor*
AMY SLUGG MOORE *Patient Education Editor*
BRUCE M. MARICH *Production Manager*
ROBERT J. DEMAREST *Medical Art Director*
JOSEPH A. PANGRACE *Medical Illustrator*
DAVID R. SCHUMICK *Medical Illustrator*
JOSEPH KANASZ *Medical Illustrator*
IRIS TRIVILINO *Department Coordinator*
LASONYA CRAWL *Billing/Accounting*

EDITORIAL ADVISORY BOARD

MUZAFFAR AHMAD, MD
WILMA FOWLER BERGFELD, MD
EMMANUEL L. BRAVO, MD
WILLIAM R. HART, MD
ERIC A. KLEIN, MD
FLOYD D. LOOP, MD
DOUGLAS S. MOODIE, MD
RICHARD H. NODAR, PHD
WILLIAM L. PROUDFIT, MD
WILLIAM C. SHELTON, MD
ERIC J. TOPOL, MD
HERBERT P. WIEDEMANN, MD

ASSOCIATE EDITORS

ALEJANDRO C. ARROLIGA, MD
DAVID BRONSON, MD
WILLIAM D. CAREY, MD
BRIAN A. CLARK, PHD, MD
BRIAN G. DONLEY, MD
GARY FRANCIS, MD
KATHLEEN FRANCO-BRONSON, MD
STEVEN M. GORDON, MD
BRIAN GRIFFIN, MD
GARY HOFFMAN, MD
BYRON J. HOOGWERF, MD
MANI S. KAVURU, MD
RITA S. LEE, MD

MANDY C. LEONARD, PHARM D
ANGELO A. LICATA, MD, PHD
DAVID L. LONGWORTH, MD
MAURIE MARKMAN, MD
ATUL C. MEHTA, MD
NEIL B. MEHTA, MD
FRANKLIN A. MICHOTA, MD
STEVEN NISSEN, MD
ROBERT M. PALMER, MD
NORMAN B. RATLIFF, MD
S. SETHU K. REDDY, MD
MARK E. ROSE, MD
MARK ROTH, MD
DOUGLAS SEIDNER, MD
CATHY A. SILA, MD
HOLLY L. THACKER, MD
JAMES THOMAS, MD
DONALD G. VIDT, MD
WILLIAM S. WILKE, MD
MARC WILLIAMS, MD
JAMES B. YOUNG, MD

CLEVELAND CLINIC
FOUNDATION DIVISION
OF EDUCATION
ANDREW J. FISHELEDER, MD
Chairman
PHILLIP R. GARD
Administrator

REPRINTS: Marsha Fogler 1-800-482-1450 mrfogler@medicalreprints.com

The *Cleveland Clinic Journal of Medicine* (ISSN 0891-1150) is published 12 times yearly by The Cleveland Clinic Foundation.

STATEMENTS AND OPINIONS expressed in the *Cleveland Clinic Journal of Medicine* are those of the authors and not necessarily of The Cleveland Clinic Foundation or its Board of Trustees.

SUBSCRIPTION RATES: U.S. and possessions: personal \$98; institutional \$124; single copy/back issue \$16. Foreign: \$124; single copy/back issue \$16. Institutional (multiple-reader rate) applies to libraries, schools, hospitals, and federal, commercial, and private institutions and organizations. Individual subscriptions must be in the names of, billed to, and paid by individuals.

POSTMASTER ADDRESS CHANGES: *Cleveland Clinic Journal of Medicine*, NA32, 9500 Euclid Avenue, Cleveland, OH 44195

SUBSCRIPTIONS, EDITORIAL, BILLING/ACCOUNTING AND PRODUCTION: (same address as above) Phone (216) 444-2661 Fax (216) 444-9385 E-mail ccjm@ccf.org <http://www.ccjm.org>

ADVERTISING: Joseph Dennehy, Director, Sales and Marketing, 120 Castle Ridge Rd, Manhasset, NY 11030 • Phone (516) 365-8640 • Fax (516) 365-0587

AUTHORIZATION TO PHOTOCOPY items for internal or personal use is granted by the *Cleveland Clinic Journal of Medicine*, ISSN 0891-1150, published by The Cleveland Clinic Foundation, provided that the appropriate fee is paid directly to Copyright Clearance Center, 222 Rosewood Drive, Danvers, MA 01923 USA 978-750-8400. Prior to photocopying items for educational classroom use, please contact Copyright Clearance Center, Inc., at the address above. For permission to reprint material, please fax your request with complete information to the Reproduction department at CCC, fax (978) 750-4470. For further information visit CCC Online at <http://www.copyright.com>. To order bulk reprints, see above.

DISCLAIMER: This information is provided for general medical education purposes only and is not meant to substitute for the independent medical judgment of a physician relative to the diagnostic and treatment options of a specific patient's medical condition. In no event will The Cleveland Clinic Foundation be liable for any decision made or action taken in reliance upon the information provided through this activity.



CONTINUED FROM PAGE 2

REVIEW

New guidelines: What to do about an unexpected positive tuberculin skin test 49

With tuberculosis declining in prevalence, the focus is shifting to testing only persons at increased risk.

C. CURLEY



**PATIENT
INFORMATION**

If your tuberculosis skin test is positive 56

REVIEW

Thyrotoxicosis and the cardiovascular system: 57 Subtle but serious effects

One should suspect thyrotoxicosis in patients with palpitations, tachycardia, exercise intolerance, or dyspnea on exertion.

M. ROFFI, F. CATTANEO, AND E.J. TOPOL

1-MINUTE CONSULT



Brief answers to specific clinical questions

Alosetron (Lotronex) is back: 64 Should I use it to treat my patients with irritable bowel syndrome?

The FDA recently approved the remarketing of alosetron, but with strict limitations.

B. SHEN AND E.E. SOFFER

IM BOARD REVIEW

A 62-year-old man with sudden onset 66 of orthopnea and left shoulder weakness and pain

What is the cause of this patient's symptoms? A self-test.

W.C. COOK AND J. CHAPMAN

DEPARTMENTS



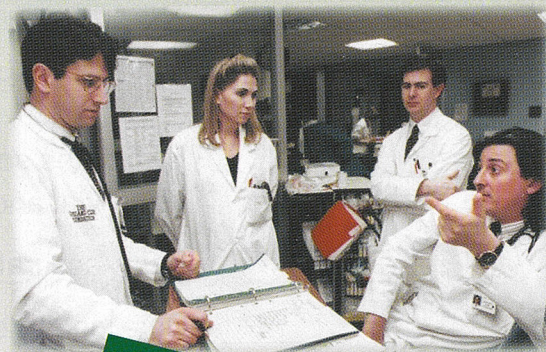
CME Self-test 71

- The *Cleveland Clinic Journal of Medicine* is peer-reviewed and indexed in *Index Medicus*.

UPCOMING FEATURES

- **ALLHAT trial:**
Which BP drugs are best?
- **Building new bone:**
PTH for osteoporosis
- **Microalbuminuria:**
A new coronary risk factor?
- **Bone density:**
Behind the numbers
- **Practical tips**
for warfarin dosing
- **Advances in heart failure:**
Drugs to devices
- **Challenges and choices**
in chronic pain
- **Prostate supplements:**
Promise or hype?

■ VISIT OUR WEB SITE AT [HTTP://WWW.CCMJ.ORG](http://www.ccmj.org)



DEDICATED TO LIFELONG LEARNING
**CLEVELAND
CLINIC
JOURNAL OF
MEDICINE**