



TABLE OF CONTENTS

FROM THE EDITOR

CME reduction redux: 447 While less isn't more, it's better than none

Like it or not, we have to follow ACCME rules. Other news: Your next certificate of CME credit will be a postcard—watch your mailbox.

J.D. CLOUGH AND P.G. STUDER

1-MINUTE CONSULT



Which medications should be held 449 before a pharmacologic or exercise stress test?

This depends on the reason for the test, whether the patient can safely do without the medication, and the type of test.

D.A. UNDERWOOD

IM BOARD REVIEW

A young man with hyperthermia 453 and new-onset seizures

What is the cause of this patient's symptoms? A self-test.

J.R. QUEEN AND J. GLAUSER

EDITORIAL

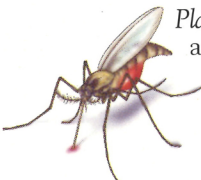
Drug smuggling raises 465 medical and legal issues

Smugglers are swallowing massive amounts of cocaine packaged in balloons or condoms. The treatment is controversial. And then there are ethical and legal questions.

J. RELLA

REVIEW

Educating travelers about malaria: 469 Dealing with resistance and patient noncompliance



Plasmodium has developed resistance to antimalarial drugs in vast areas of the world, making malaria more difficult to prevent.

K. DARDICK



**PATIENT
INFORMATION**

Protecting yourself against malaria 480

CONTINUED ON PAGE 444

CLEVELAND CLINIC JOURNAL OF MEDICINE



JOHN D. CLOUGH, MD Editor-in-Chief
BRIAN F. MANDELL, MD, PHD Deputy Editor
PETER STUDER Publisher
PHILLIP E. CANUTO Executive Editor
GLENN R. CAMPBELL Executive Editor
RAY BORAZANIAN Managing Editor
DAVID A. HUDDLESTON Manuscript Editor
AMY SLUGG MOORE Patient Education Editor
BRUCE M. MARICH Production Manager
JOHN E. PRESSELLO Art Director
ROBERT J. DEMARESE Medical Art Director
JOSEPH A. PANGRACE Medical Illustrator
DAVID R. SCHUMICK Medical Illustrator
IRIS OTERO Department Coordinator
AUDRA HASKINS Billing/Accounting

EDITORIAL ADVISORY BOARD

MUZAFFAR AHMAD, MD
WILMA FOWLER BERGFELD, MD
EMMANUEL L. BRAVO, MD
WILLIAM R. HART, MD
ERIC A. KLEIN, MD
FLOYD D. LOOP, MD
DOUGLAS S. MOODIE, MD
RICHARD H. NODAR, PHD
WILLIAM L. PROUDFIT, MD
WILLIAM C. SHELTON, MD
ERIC J. TOPOL, MD
HERBERT P. WIEDEMANN, MD

MANI S. KAVURU, MD
MANDY C. LEONARD, PHARM D
ANGELO A. LICATA, MD, PHD
DAVID L. LONGWORTH, MD
MAURIE MARKMAN, MD
ATUL C. MEHTA, MD
NEIL B. MEHTA, MD
FRANKLIN A. MICHOTA, MD
STEVEN NISSEN, MD
ROBERT M. PALMER, MD
NORMAN B. RATLIFF, MD
S. SETHU K. REDDY, MD
MARK ROTH, MD
DOUGLAS SEIDNER, MD
CATHY A. SILA, MD
HOLLY L. THACKER, MD
JAMES THOMAS, MD
DONALD G. VIDT, MD
WILLIAM S. WILKE, MD
MARC WILLIAMS, MD
JAMES B. YOUNG, MD

ASSOCIATE EDITORS

ALEJANDRO C. ARROLIGA, MD
DAVID BRONSON, MD
WILLIAM D. CAREY, MD
DAVID CASEY, MD
BRIAN A. CLARK, PHD, MD
BRIAN G. DONLEY, MD
GARY FRANCIS, MD
KATHLEEN FRANCO-BRONSON, MD
STEVEN M. GORDON, MD
BRIAN GRIFFIN, MD
GARY HOFFMAN, MD
BYRON J. HOOGEWERF, MD
JOHN JEWELL, MD

CLEVELAND CLINIC FOUNDATION DIVISION OF EDUCATION

ANDREW J. FISHLER, MD
Chairman
PHILLIP R. GARD
Administrator

REPRINTS: Marsha Fogler 1-800-482-1450 mfgogler@medicalreprints.com

The Cleveland Clinic Journal of Medicine (ISSN 0891-1150) is published 12 times yearly by The Cleveland Clinic Foundation.

STATEMENTS AND OPINIONS expressed in the Cleveland Clinic Journal of Medicine are those of the authors and not necessarily of The Cleveland Clinic Foundation or its Board of Trustees.

SUBSCRIPTION RATES: U.S. and possessions: personal \$95; institutional \$120; single copy/back issue \$16. Foreign: \$120; single copy/back issue \$16. Institutional (multiple-reader rate) applies to libraries, schools, hospitals, and federal, commercial, and private institutions and organizations. Individual subscriptions must be in the names of, billed to, and paid by individuals.

POSTMASTER ADDRESS CHANGES: Cleveland Clinic Journal of Medicine, NA32, 9500 Euclid Avenue, Cleveland, OH 44195

SUBSCRIPTIONS, EDITORIAL, BILLING/ACCOUNTING AND PRODUCTION: (same address as above) Phone (216) 444-2661 Fax (216) 444-9385 E-mail ccjm@ccc.org http://www.ccjm.org

ADVERTISING: Joseph Dennehy, Director, Sales and Marketing, 120 Castle Ridge Rd, Manhasset, NY 11030 • Phone (516) 365-8640 • Fax (516) 365-0587

AUTHORIZATION TO PHOTOCOPY items for internal or personal use is granted by the Cleveland Clinic Journal of Medicine, ISSN 0891-1150, published by The Cleveland Clinic Foundation, provided that the appropriate fee is paid directly to Copyright Clearance Center, 222 Rosewood Drive, Danvers, MA 01923 USA 978-750-8400. Prior to photocopying items for educational classroom use, please contact Copyright Clearance Center, Inc., at the address above. For permission to reprint material, please fax your request with complete information to the Reproduction department at CCC, fax (978) 750-4470. For further information visit CCC Online at http://www.copyright.com. To order bulk reprints, see above.

AUTHOR DISCLOSURES: This information is intended to apply to CME articles and non-CME articles that appear in the Journal. Current guidelines state that participants in CME activities should be made aware of any affiliation or financial interest that may affect an author's article as well as any discussion of off-label drug therapies. All authors, except those indicated with an asterisk and a footnote with the article, have disclosed that they do not have a conflict of interest or do not discuss off-label therapies.



COPYRIGHT © 2002 THE CLEVELAND CLINIC FOUNDATION PRINTED IN U.S.A.



CONTINUED FROM PAGE 442

REVIEW

Idiopathic dilated cardiomyopathy: A common but mystifying cause of heart failure 481

In most cases, dilated cardiomyopathy has no known cause. That shouldn't stop you from looking for one.

S.B. MOHAN, M. PARKER, M. WEHBI, AND P. DOUGLASS

REVIEW

Women and headache: A treatment approach based on life stages 488

The preventive, abortive, and nonpharmacologic approaches to headache treatment vary during the stages of a woman's life.

L.K. MANNIX, M. DIAMOND, AND E. LODER

MEDICAL GRAND ROUNDS

Update on kidney transplantation: Increasing clinical success, expanding waiting lists 501

Success rates are improving, but the need for organs continues to far exceed the supply.

W.E. BRAUN

MEDICAL GRAND ROUNDS

Intensive care update: Seven studies that should change your practice 505

Some of these studies lay to rest widely used but ineffective therapies; others challenge us to establish new standards of care.

A.C. ARROLIGA

DEPARTMENTS

Letters to the Editor 448

Remembering some pioneers in heart-valve replacement.

Change of address 466

CME Credit Test 511

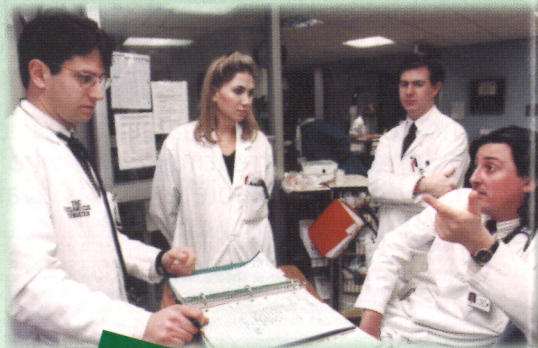


■ The *Cleveland Clinic Journal of Medicine* is peer-reviewed and indexed in *Index Medicus*.

UPCOMING FEATURES

- D-dimer and spiral CT for diagnosing pulmonary embolism
- Acute stroke treatment: Beyond IV t-PA
- New treatments for inflammatory bowel disease
- Preventing catheter infections
- HPV and genital warts: Testing, treatment
- Strategies for using oral diabetes drugs
- Preventing catheter infections
- Narrowing the differential diagnosis of hematuria
- Recognizing and preventing malignant melanoma

■ VISIT OUR WEB SITE AT [HTTP://WWW.CCJM.ORG](http://www.ccjm.org)



DEDICATED TO LIFELONG LEARNING
CLEVELAND
CLINIC
JOURNAL OF
MEDICINE