



TABLE OF CONTENTS

FROM THE EDITOR

Linda Hengstler, publisher, editor, and friend, ends 14-year stint at CCJM 99

Under Ms. Hengstler's guidance, the *Journal* has found and grown into its niche as an increasingly appreciated and widely read educational publication for the busy clinician.

J.D. CLOUGH AND B.F. MANDELL

MEDICAL GRAND ROUNDS

Halting the progression of heart failure: Finding the optimal combination therapy 104

Recommendations on how to find the optimal combination of agents that can slow the progression of heart failure while minimizing side effects.

J.N. BASILE

REVIEW

A primer on referring patients for psychotherapy 113

With many models of psychotherapy available, finding a good fit between therapist and patient is crucial.

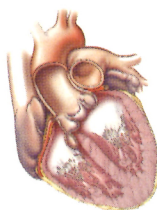
S.M. BEA AND G.E. TESAR

CARDIOVASCULAR BOARD REVIEW

A 23-year-old man with a continuous heart murmur 128

What is the cause of this patient's cardiac symptoms? A self-test.

K. MIKIELSKI, J. BRECHTKEN, AND H. LEVER



EDITORIAL

Diagnosis of lupus: A glass half full 141

The tests will always be imperfect, but with better knowledge of how they perform, we can look at the clinical laboratory's role in lupus diagnosis as a glass half full rather than half empty.

J.D. CLOUGH

REVIEW

Tired, aching, ANA-positive: Does your patient have lupus or fibromyalgia? 143

Do not rely on the antinuclear antibody test to make the distinction between fibromyalgia and lupus.

D.E. BLUMENTHAL

CONTINUED ON PAGE 102

■ The *Cleveland Clinic Journal of Medicine* is peer-reviewed and indexed in *Index Medicus*.

CLEVELAND CLINIC JOURNAL OF MEDICINE



JOHN D. CLOUGH, MD Editor-in-Chief
BRIAN F. MANDELL, MD, PHD Deputy Editor
LINDA K. HENGSTLER Editor and Publisher
PHILLIP E. CANUTO Executive Editor
RAY BORAZANIAN Managing Editor
DAVID A. HUDDLESTON Manuscript Editor
AMY SLUGG MOORE Patient Education Editor
BRUCE M. MARICH Production Manager
JOHN E. PRESSELLO Art Director
ROBERT J. DEMAREST Medical Art Director
JOSEPH A. PANGRACE Medical Illustrator
DAVID R. SCHUMICK Medical Illustrator
ERMA RICHARDSON Department Coordinator
IRIS OTERO Permissions
AUDRA HASKINS Billing/Accounting

EDITORIAL ADVISORY BOARD

MUZAFFAR AHMAD, MD
WILMA FOWLER BERGFELD, MD
EMMANUEL L. BRAVO, MD
RAY W. GIFFORD, JR, MD
WILLIAM R. HART, MD
ERIC A. KLEIN, MD
FLOYD D. LOOP, MD
DOUGLAS S. MOODIE, MD
RICHARD H. NODAR, PHD
WILLIAM L. PROUDFIT, MD
WILLIAM C. SHELDON, MD
ERIC J. TOPOL, MD
HERBERT P. WIEDEMANN, MD
BRIAN GRIFFIN, MD
GARY HOFFMAN, MD
BYRON J. HOOGWERF, MD
SYEDA R. INAMDAR, MD
MANI S. KAVURU, MD
MANDY C. LEONARD, PHARM
ANGELO A. LICATA, MD, PHD
DAVID L. LONGWORTH, MD
STEPHEN MAHONEY, MD
MAURIE MARKMAN, MD
ATUL C. MEHTA, MD
NEIL B. MEHTA, MD
FRANKLIN A. MICHOTA, MD
STEVEN NISSEN, MD
ROBERT M. PALMER, MD
NORMAN B. RATLIFF, MD
S. SETHU K. REDDY, MD
MARK ROTH, MD
DOUGLAS SEIDNER, MD
CATHY A. SILA, MD
HOLLY L. THACKER, MD
JAMES THOMAS, MD
DONALD G. VIDT, MD
WILLIAM S. WILKE, MD
MARC WILLIAMS, MD
JAMES B. YOUNG, MD
ZOBABIR YOUNOSSI, MD

ASSOCIATE EDITORS

ALEJANDRO C. ARROLIGA, MD
AMJAD ALMAHAMEED, MD
DAVID BRONSON, MD
BEN H. BROUHARD, MD
WILLIAM D. CAREY, MD
WILLIAM A. CHILCOTE, MD
BRIAN A. CLARK, PHD, MD
BRIAN G. DONLEY, MD
GARY FRANCIS, MD
KATHLEEN FRANCO-BRONSON, MD
STEVEN M. GORDON, MD

ZOBABIR YOUNOSSI, MD

REPRINTS: Marsha Fogler 1-800-482-1450 mffogler@medicalreprints.com

The *Cleveland Clinic Journal of Medicine* (ISSN 0891-1150) is published 12 times yearly by The Cleveland Clinic Foundation.

STATEMENTS AND OPINIONS expressed in the *Cleveland Clinic Journal of Medicine* are those of the authors and not necessarily of The Cleveland Clinic Foundation or its Board of Trustees.

SUBSCRIPTION RATES: U.S. and possessions: personal \$95; institutional \$120; single copy/back issue \$16. Foreign: \$120; single copy/back issue \$16. Institutional (multiple-reader rate) applies to libraries, schools, hospitals, and federal, commercial, and private institutions and organizations. Individual subscriptions must be in the names of, billed to, and paid by individuals.

POSTMASTER ADDRESS CHANGES: *Cleveland Clinic Journal of Medicine*, NA32, 9500 Euclid Avenue, Cleveland, OH 44195

SUBSCRIPTIONS, EDITORIAL, BILLING/ACCOUNTING AND PRODUCTION: (same address as above) Phone (216) 444-2661 Fax (216) 444-9385 E-mail ccjm@ccf.org http://www.ccjm.org

ADVERTISING: Joseph Dennehy, Director, Sales and Marketing, 120 Castle Ridge Rd, Manhasset, NY 11030 • Phone (516) 365-8640 • Fax (516) 365-0587

AUTHORIZATION TO PHOTOCOPY items for internal or personal use is granted by the *Cleveland Clinic Journal of Medicine*, ISSN 0891-1150, published by The Cleveland Clinic Foundation, provided that the appropriate fee is paid directly to Copyright Clearance Center, 222 Rosewood Drive, Danvers, MA 01923 USA 978-750-8400. Prior to photocopying items for educational classroom use, please contact Copyright Clearance Center, Inc., at the address above. For permission to reprint material, please fax your request with complete information to the Reproduction department at CCC, fax (978) 750-4470. For further information visit CCC Online at http://www.copyright.com. To order bulk reprints, see above.

AUTHOR DISCLOSURES: This information is intended to apply to CME articles and non-CME articles that appear in the *Journal*. Current guidelines state that participants in CME activities should be made aware of any affiliation or financial interest that may affect an author's article as well as any discussion of off-label drug therapies. All authors, except those indicated with an asterisk and a footnote with the article, have disclosed that they do not have a conflict of interest or do not discuss off-label therapies.



COPYRIGHT © 2002 THE CLEVELAND CLINIC FOUNDATION PRINTED IN U.S.A.



CONTINUED FROM PAGE 100

1-MINUTE CONSULT.....



Brief answers to specific clinical questions

What is the best way to diagnose streptococcal pharyngitis?

153

Rapid tests are highly specific but less sensitive.
Throat culture is still the gold standard.

J. GOLDFARB

REVIEW.....

Advances in treatment of chronic hepatitis C: 'Pegylated' interferons

155

New formulations of interferon alfa that incorporate
polyethylene glycol in the drug molecule are an important
advance in the treatment of chronic hepatitis C.

K.A. SHARIEFF, D. DUNCAN, AND Z. YOUNOSSI

REVIEW.....

Idiopathic retroperitoneal fibrosis: Prompt diagnosis preserves organ function

160

The chief dangers from idiopathic retroperitoneal fibrosis—
ureteral obstruction with loss of renal function, and other
organ involvement—are avoidable and treatable with prompt
diagnosis.

S. MONEV

REVIEW.....

Chronic tension-type headache: Advice for the viselike-headache patient

167

About 3% of people complain of daily viselike headaches
without associated symptoms. Therapy consists of tricyclic
antidepressants, biofeedback, and stress management, although
solid data are lacking.

G.D. SOLOMON

PATIENT
INFORMATION

Taking the tension out of tension headaches

173

DEPARTMENTS.....

Change of Address

127

Call for Peer Reviewers

142

CME Credit Test

175



UPCOMING FEATURES

- Brain natriuretic peptide:
A marker of heart failure
- Do statin drugs
affect osteoporosis?
- Who should be tested for
hereditary hemochromatosis?
- How to diagnose
pheochromocytoma
- Managing oncologic
emergencies
- Assessing and counseling
older drivers
- The case for treating
mild thyroid failure
- Managing end-stage
heart failure

■ VISIT OUR WEB SITE AT [HTTP://WWW.CCJM.ORG](http://www.ccjm.org)



DEDICATED TO LIFELONG LEARNING
CLEVELAND
CLINIC
JOURNAL OF
MEDICINE