



TABLE OF CONTENTS

FROM THE EDITOR

CME credit:

Fewer hours, but still a good deal

Owing to ACCME regulations, we can give you only 1 hour of CME credit per issue instead of the 2 hours you have been getting. Still, we hope you find the *Journal* worth your time and attention.

J.D. CLOUGH AND L.K. HENGSTLER

3

EDITORIAL

Taking it to the bar:

Medicolegal ramifications of perioperative steroid coverage

Will a jury side with an expert witness who cites "usual and customary" practice—or with one who cites published evidence?

B.F. MANDELL AND V.L. VANCE

7

1-MINUTE CONSULT



Brief answers to specific clinical questions

When is perioperative 'steroid coverage' necessary?

Although data are lacking, it seems prudent to boost glucocorticoid doses in the perioperative period for patients receiving long-term steroid therapy.

M. SHAW

9

MEDICAL GRAND ROUNDS

Adverse events:

Reducing the risk of litigation

Common-sense measures can prevent adverse outcomes and lawsuits.

N.G. CORREIA

15

INTERPRETING KEY TRIALS

Statins in acute coronary syndromes: Start them in the hospital

New data indicate statins should be started as soon as possible in acute coronary syndromes. Current guidelines may need to be changed.

M. ACEVEDO AND D.L. SPRECHER

25

CONTINUED ON PAGE 6

■ The *Cleveland Clinic Journal of Medicine* is peer-reviewed and indexed in *Index Medicus*.

JOHN D. CLOUGH, MD *Editor-in-Chief*
BRIAN F. MANDELL, MD, PHD *Deputy Editor*
LINDA K. HENGSTLER *Editor and Publisher*
PHILLIP E. CANUTO *Executive Editor*
RAY BORAZANIAN *Managing Editor*
DAVID A. HUDDLESTON *Manuscript Editor*
AMY SLUGG MOORE *Patient Education Editor*
BRUCE M. MARICH *Production Manager*
JOHN E. PRESSELLO *Art Director*
ROBERT J. DEMAREST *Medical Art Director*
JOSEPH A. PANGRACE *Medical Illustrator*
DAVID R. SCHUMICK *Medical Illustrator*
ERMA RICHARDSON *Department Coordinator*
IRIS OTERO *Permissions*
AUDRA HASKINS *Billing/Accounting*

EDITORIAL ADVISORY BOARD

MUZAFFAR AHMAD, MD
WILMA FOWLER BERGFELD, MD
EMMANUEL L. BRAVO, MD
RAY W. GIFFORD, JR, MD
WILLIAM R. HART, MD
ERIC A. KLEIN, MD
FLOYD D. LOOP, MD
DOUGLAS S. MOODIE, MD
RICHARD H. NODAR, PHD
WILLIAM L. PROUDFIT, MD
WILLIAM C. SHELDON, MD
ERIC J. TOPOL, MD
HERBERT P. WIEDEMANN, MD

BRIAN GRIFFIN, MD
GARY HOFFMAN, MD
BYRON J. HOOGWERF, MD
SYEDA R. INAMDAR, MD
MANI S. KAVURU, MD
MANDY C. LEONARD, PHARM D
ANGELO A. LICATA, MD, PHD
DAVID L. LONGWORTH, MD
STEPHEN MAHONEY, MD
MAURIE MARKMAN, MD
ATUL C. MEHTA, MD
NEIL B. MEHTA, MD
FRANKLIN A. MICHOTA, MD
STEVEN NISSEN, MD
ROBERT M. PALMER, MD
NORMAN B. RATLIFF, MD
S. SETHU K. REDDY, MD
MARK ROTH, MD
DOUGLAS SEIDNER, MD
CATHY A. SILA, MD
HOLLY L. THACKER, MD
JAMES THOMAS, MD
DONALD G. VIDT, MD
WILLIAM S. WILKE, MD
MARC WILLIAMS, MD
JAMES B. YOUNG, MD
ZOBIAIR YOUNOSSI, MD

ASSOCIATE EDITORS

ALEJANDRO C. ARROLIGA, MD
AMJAD ALMAHAMEED, MD
DAVID BRONSON, MD
BEN H. BROUHARD, MD
WILLIAM D. CAREY, MD
WILLIAM A. CHILCOTE, MD
BRIAN A. CLARK, PHD, MD
BRIAN G. DONLEY, MD
GARY FRANCIS, MD
KATHLEEN FRANCO-BRONSON, MD
STEVEN M. GORDON, MD

REPRINTS: Marsha Fogler 1-800-482-1450 mfgler@medcalreprints.com

The *Cleveland Clinic Journal of Medicine* (ISSN 0891-1150) is published 12 times yearly by The Cleveland Clinic Foundation.

STATEMENTS AND OPINIONS expressed in the *Cleveland Clinic Journal of Medicine* are those of the authors and not necessarily of The Cleveland Clinic Foundation or its Board of Trustees.

SUBSCRIPTION RATES: U.S. and possessions: personal \$95; institutional \$120; single copy/back issue \$16. Foreign: \$120; single copy/back issue \$16. Institutional (multiple-reader rate) applies to libraries, schools, hospitals, and federal, commercial, and private institutions and organizations. Individual subscriptions must be in the names of, billed to, and paid by individuals.

POSTMASTER ADDRESS CHANGES: *Cleveland Clinic Journal of Medicine*, NA32, 9500 Euclid Avenue, Cleveland, OH 44195

SUBSCRIPTIONS, EDITORIAL, BILLING/ACCOUNTING AND PRODUCTION: (same address as above) Phone (216) 444-2661 Fax (216) 444-9385 E-mail ccjm@ccc.org http://www.ccjm.org

ADVERTISING: Joseph Dennehy, Director, Sales and Marketing, 120 Castle Ridge Rd, Manhasset, NY 11030 • Phone (516) 365-8640 • Fax (516) 365-0587

AUTHORIZATION TO PHOTOCOPY items for internal or personal use is granted by the *Cleveland Clinic Journal of Medicine*, ISSN 0891-1150, published by The Cleveland Clinic Foundation, provided that the appropriate fee is paid directly to Copyright Clearance Center, 222 Rosewood Drive, Danvers, MA 01923 USA 978-750-8400. Prior to photocopying items for educational classroom use, please contact Copyright Clearance Center, Inc., at the address above. For permission to reprint material, please fax your request with complete information to the Reproduction department at CCC, fax (978) 750-4470. For further information visit CCC Online at http://www.copyright.com. To order bulk reprints, see above.

AUTHOR DISCLOSURES: This information is intended to apply to CME articles and non-CME articles that appear in the *Journal*. Current guidelines state that participants in CME activities should be made aware of any affiliation or financial interest that may affect an author's article as well as any discussion of off-label drug therapies. All authors, except those indicated with an asterisk and a footnote with the article, have disclosed that they do not have a conflict of interest or do not discuss off-label therapies.



COPYRIGHT © 2002 THE CLEVELAND CLINIC FOUNDATION PRINTED IN U.S.A.



CONTINUED FROM PAGE 4

IM BOARD REVIEW

A 45-year-old woman with acute-onset weakness in the intensive care unit 38

What is the cause of this patient's symptoms? A self-test.

L.-L. LIM, R. PRAYSON, AND R. SHIELDS

REVIEW

Cultural and clinical issues in the care of Asian patients 50

Three case studies that illustrate some of the special problems affecting the health care of Asian patients and ways to deal with them constructively.

X.W. JIN, J. SLOMKA, AND C.E. BLIXEN

THE CLINICAL PICTURE

A homeless 63-year-old man with an abnormal electrocardiogram 62

Questions and answers on the visible signs of diseases.

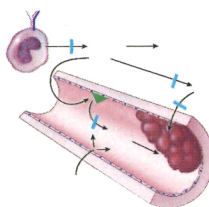
R. BARGOUT AND B.P. LUCAS

REVIEW

Sepsis: Menu of new approaches replaces one therapy for all 65

Recombinant human activated protein C is the first therapy approved for treating sepsis. However, instead of a "one therapy for all" approach, we are finding that therapy must be targeted.

S.P. LAROSA



HEART VALVE UPDATE

Caring for patients with prosthetic heart valves 75

General internists have a leading role in providing routine care, including regular physical examinations, echocardiograms, antithrombotic therapy, and antibiotic prophylaxis against endocarditis.

M.S. BETTADAPUR, B.P. GRIFFIN, AND C.R. ASHER

DEPARTMENTS

CME Calendar 74

2001 Reviewers 88

Letters to the Editor 89

CME Credit Test 95



UPCOMING FEATURES

- Does your patient have lupus—or fibromyalgia?
- Do statin drugs affect osteoporosis?
- Who should be tested for hereditary hemochromatosis?
- How to avoid drug nephrotoxicity
- How to diagnose pheochromocytoma
- Brain natriuretic peptide: A marker of heart failure
- Advances in treating hepatitis C
- Managing oncologic emergencies
- Assessing and counseling older drivers

■ VISIT OUR WEB SITE AT [HTTP://WWW.CCJM.ORG](http://www.ccjm.org)



DEDICATED TO LIFELONG LEARNING
CLEVELAND
CLINIC
JOURNAL OF
MEDICINE